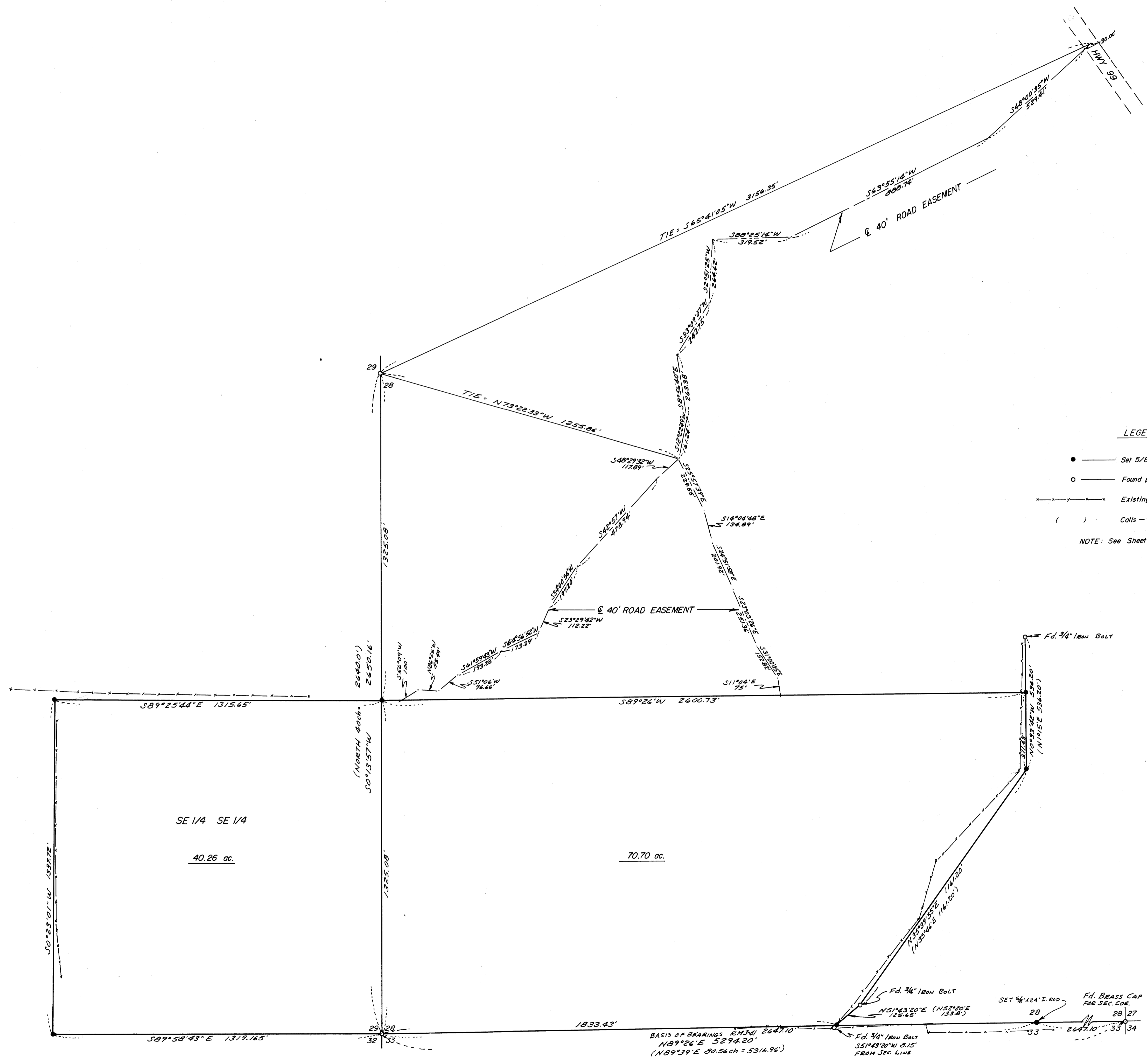


0.8 11.0 8.0
 127
 179-64B

COUNTY SURVEYORS FILE DATA
 DO NOT REMOVE FROM OFFICE

FILED *BS*
 RECEIVED *JK*
 DEC 15 1980
 COUNTY SURVEYOR
 BONDLE COUNTY, ORE.
BS



LEGEND

- — Set 5/8" x 30" iron rod (except as noted)
- — Found point is as noted herein
- Existing fence
- () — Calls — Deed or GLO

NOTE: See Sheet 1 for Section corner data.

COUNTY SURVEYORS FILE DATA
 DO NOT REMOVE FROM OFFICE

REGISTERED
 PROFESSIONAL
 LAND SURVEYOR
Eugene A. Bloom
 OREGON
 MAY 15, 1980
 EUGENE A. BLOOM
 452

SURVEY FOR DESCRIPTION IN SW 1/4 SEC. 28 AND SE 1/4 SEC. 29 T.22S. R.5W.W.M.		SCALE	DRAWN BY
FOR: FUGATE & PAYNE		1" = 200'	ead
BY: A A SURVEYING SERVICE INC. P.O. Box 130, Roseburg, Oregon 97470	DATE	DRAWING NUMBER	REVISED
12/1980	SHEET 2 OF 2	195-80	

MINOR AND MAJOR LAND PARTITIONS
SUBDIVISIONS - CADASTRALS - SLOPE STAKING
PROPERTY AND LOT SURVEYS - ALTA'S

~~RAM 3-4~~ M 79-64

FILED BY
RECEIVED *jh*

PHONE 1-503-672-2096

AA SURVEYING SERVICE INC.

DEC 15 1980
COUNTY SURVEYOR
2498 OLD HWY 101
DOUGLAS COUNTY, ORE. ROSELBURG, OREGON 97470

P.O. Box ~~130~~ 130

NARRATIVE FOR FUGATE AND PAYNE

JO# 195-80

The purpose of this survey is to survey the Southeast one-quarter of the Southeast one-quarter of Section 29, Township 22 South, Range 5 West, Willamette Meridian and approximately 70 acres lying in the Southwest one-quarter of Section 28, Township 22 South, Range 5 West, Willamette Meridian.

Crew members were Eugene A. Bloom, L.S., Herman A. Pieske, L.S., David Orlandi, Steve Carlson, Donald Bloom and Darrell Jones.

The instruments used were: Theodolites; Lietz TM-6 and Lietz TM-20 C, EDMs: K&E Auto Ranger and Topcon IM-CZ.

A search was made to locate the one-quarter corners and section corners of Section 29. After a diligent search was made we found all the corners, except the North one-quarter corner, South one-quarter corner and the Northeast corner of Section 29. We searched for corners east along the north lines of Sections 28 and 27 and found the closest corner to be the Section corner common to Sections 22, 23, 26 and 27.

We then searched for the one-quarter corner common to Sections 20 and 21. This corner was set by Wilford Haines. After a diligent search was made and not finding the corner I spoke with Mr. Haines and was told that the corner had been destroyed by excavation work and that the BT's had been destroyed by fire.

We then searched for the Section corner common to Sections 16, 17, 20 and 21. We found a 3/4 inch iron bolt, which was also found by Mr. Haines in

REGISTERED
PROFESSIONAL
LAND SURVEYOR
Eugene A. Bloom
OREGON
MAY 13, 1960
EUGENE A. BLOOM
492

FILED AS
RECEIVED *vh*

DEC 15 1980

JO# 195-80
NARRATIVE FOR FUGATE AND PAYNE

Page 2

COUNTY SURVEYOR
DOUGLAS COUNTY, ORE.

1975. However he did not find any evidence supporting the iron bolt (no BT's) and after I searched at the County Surveyor's office I found no record as to how or who set the iron bolt. It was then determined that we would have to continue north until a good corner was found. The corner common to Sections 8, 9, 16 and 17 was found.

We now had enough information to re-establish by double proportion the Section corner common to Sections 20, 21, 28 and 29, using the Northwest corner of Section 29, Northeast corner of Section 27, the East one-quarter corner of Section 29 and the Section corner common to Sections 8, 9, 16 and 17. We tied by survey all of the corners we had previously found, double proportioned the Northeast corner of Section 29 and then subdivided Section 29.

We set a brass cap at the Northeast corner of Section 29. At the South one-sixteenth, the Southeast one-sixteenth, and the East one-sixteenth corner on the South line, we set 5/8 inch by 30 inch iron rods.

The survey in Section 28 was accomplished by surveying the South line of the Section. Starting at the Southwest corner of the Section, searching for the South one-quarter corner of the Section. ^(WHICH WAS NOT FOUND) I then set the South one-quarter corner by single proportion.

We then surveyed along the East boundary of the 70 acre parcel and found some iron bolts that evidently were set in the survey done by Gilbert A. Gardner in 1953. We used Gardner's bearing of the South line of Section as our Basis of Bearing. The corners found and set are shown on the annexed maps.

Sheet 1 and 2.

REGISTERED
PROFESSIONAL
LAND SURVEYOR

Eugene A. Bloom
OREGON
MAY 13, 1960
EUGENE A. BLOOM
492

C. S. File No. ~~58/218~~ 58/217-6b