

Survey in Government Lots 7, 8, 9 & 10, lying in S 1/2, Section 6, T22S, R10W, W.M.

NOVEMBER 1980
 COUNTY SURVEYORS FILE DATA
 DO NOT REMOVE FROM OFFICE

SCALE: 1"=100'

FILED *BS*
 RECEIVED *BS*
 NOV 20 1980
 COUNTY SURVEYOR
 DOUGLAS COUNTY, ORE.
BS

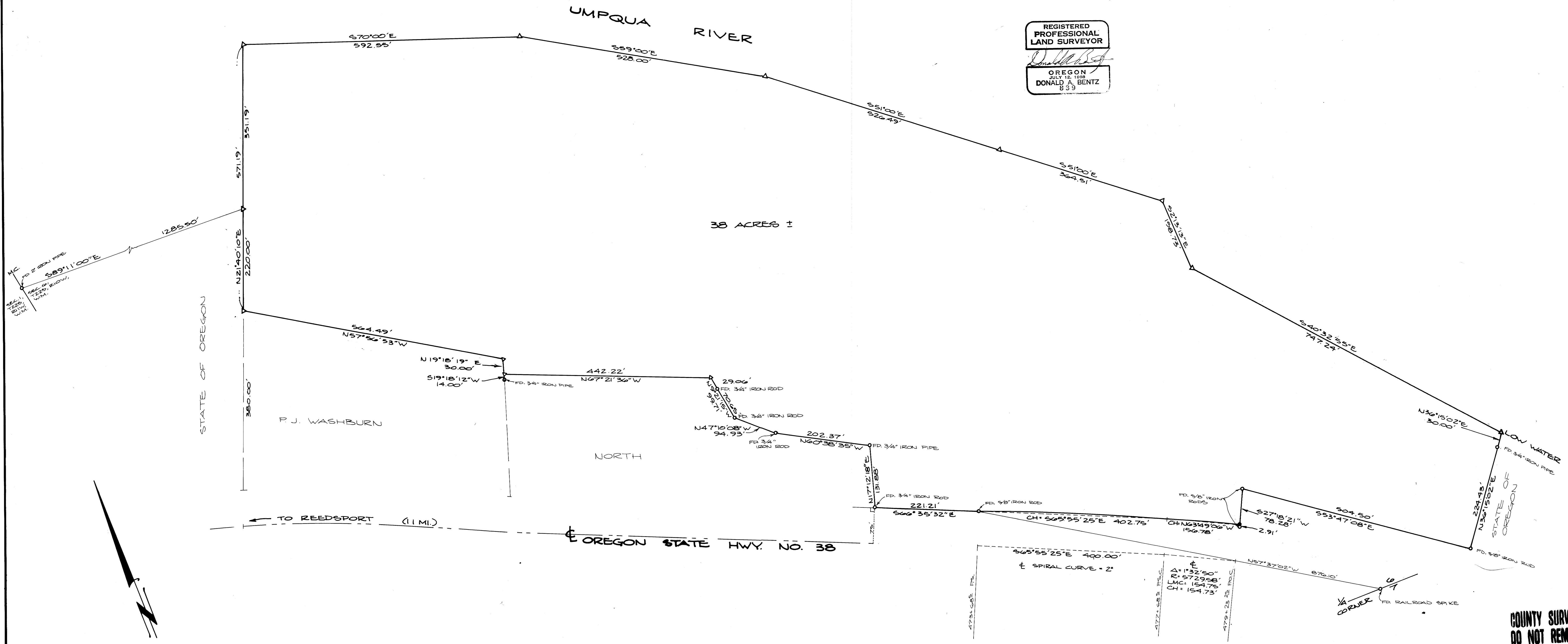
For: Phil Washburn
 By: BHW Engineering & Surveying
 1205 S.E. COURT - ROSEBURG, OREGON

LEGEND:

- FOUND MONUMENT AS NOTED
- △ LOW WATER MARK
- SET 3/8" x 30" IRON ROD

NARRATIVE:

THIS SURVEY CONSISTS OF ATTEMPTING TO LOCATE A NON-MONUMENTED TIDELANDS SURVEY (AS FILED IN COUNTY SURVEYORS RECORDS C.S. 41/32), A MEANDER LINE WITH OBVIOUS ERRORS (ON ORIGINAL PLAT) AND A STATE HWY RIGHT-OF-WAY WHICH LACKS MONUMENTATION. FIRST THE TIDELANDS SURVEY WAS ESTABLISHED PER RECORD FROM THE FOUR MEANDER CORNERS BETWEEN SECTION 1, T22S, R10W AND SECTION 6, T22S, R10W. BEARINGS BASED ON A 1/4 CORNER COMMON TO SECTIONS 6 AND 7 AND MEANDER CORNER TIE PER SURVEY M205-12. THE STATE HWY RIGHT-OF-WAY WAS ESTABLISHED USING DEED TIES APPROXIMATED TO INTERSECTING SECTION LINES. NO OTHER MONUMENTS COULD BE FOUND. A WILD T.M. THEODOLITE AND RED-1 E.D.M. WERE USED BY D. EDWARDS, D. BENTZ AND H. GIBBS TO COMPLETE THE SURVEY. COMPUTATIONS BY D. BENTZ. DEPARTING BY D. HOPKINS. MONUMENTATION OF THE TIDELANDS SURVEY AND STATE HWY RIGHT-OF-WAY IS FOR THE PURPOSE OF THIS SURVEY ONLY. THE ACTUAL LINES MAY VARY SLIGHTLY WHEN ESTABLISHED BY THEIR APPROPRIATE AGENCY.



REGISTERED
 PROFESSIONAL
 LAND SURVEYOR
Donald A. Bentz
 OREGON
 JULY 12, 1958
 DONALD A. BENTZ
 839

COUNTY SURVEYORS FILE DATA
 DO NOT REMOVE FROM OFFICE