

FOUND CORNERS

SET CORNERS

AMENDED PLAT
SECTION SUBDIVISION
SECTION 25, T21S, R5W, W.1M.
DOUGLAS COUNTY, OREGON
FOR
DALE BLACK
AND
GUISTINA LUMBER COMPANY
SEP. 1980 SCALE: 1"=500'

FILED
RECEIVED
SEP 10 1980
COUNTY SURVEYOR
DOUGLAS COUNTY, OREGON

SECTION CORNER TO SECS. 23, 24, 25, 26, T21S, R5W

3/4" GALV. I. PIPE 2" ABOVE GROUND
60" D. FIR N47°W 2213' (REC. 2202') HAS A WELL HEALED BLAZE.
10" ROTTED FIR STUMP N48°E (REC. N72°E) 818'
HAS VISIBLE SCRIBING "5 7" IN SINGLE BLAZE
12" ROTTED FIR STUMP S41°E 1594' (REC. 1592)
14" D. FIR N83°E 142' HAS VISIBLE SCRIBING "T" IN SINGLE BLAZE
12" D. FIR S16°E 123' HAS VISIBLE SCRIBING "S25 BT" IN SINGLE BLAZE
14" D. FIR S48°W 485' HAS VISIBLE SCRIBING "S25 BT" IN SINGLE BLAZE
8" D. FIR N55°W (REC. N57°W) 291' HAS VISIBLE SCRIBING
"S23 BT" IN SINGLE BLAZE
N-S, E-W FENCE CORNER S37°W 42'

S.E. 1/4 CORNER, SEC. 25, T21S, R5W

3/4" Iron Rod 6" Above Ground
6" D. FIR N26°W 163', Double Blazed & Scribed "1/4 S25..BT"
1/4 CORNER TO SECS. 25 & 26, T21S, R5W
1" Galv. Iron Pipe with Brass Cap Set 6" Above Ground
Marked "T21S R5W"
1/4 COR.
S26 | S25
1979
12" D. FIR S88°W 493', Double Blazed & Scribed "1/4 S26..BT"
10" D. FIR N39 1/2°E 55', Double Blazed & Scribed "1/4 S25..BT"

N 1/4 CORNER TO SECS. 24 & 25, T21S, R5W

3/4" Galv. Iron Pipe 6" Above Ground
16" N. FIR N11 1/2°E 492' w/scrubing "N 1/4 S24 BT" in single blaze
12" N. FIR S23°E 312' w/scrubing "N 1/4 S25 BT" in single blaze

C.N. 1/4 CORNER, SEC. 25, T21S, R5W

3/4" Iron Rod 6" Above Ground
10" D. FIR S43°E 248', Double Blazed & Scribed "C.N. 1/4 S25..BT" - Blaze faces west
12" D. FIR S23°W 283', Double Blazed & Scribed "C.N. 1/4 S25..BT" - Blaze faces east

1/4 CORNER TO SECS. 24 & 25, T21S, R5W

3/4" Galv. Iron Pipe 6" Above Ground
8" D. FIR N80°E 92' w/scrubing "1/4 S24 BT" in single blaze
6" D. FIR S31°W 35' w/scrubing "1/4 S25 BT" in single blaze

S.W. 1/4 CORNER, SEC. 25, T21S, R5W

3/4" Iron Rod 6" Above Ground
14" G. FIR S57°E 92', Double Blazed & Scribed "1/4 S25..BT"

SECTION CORNER TO SECS. 24 & 25, T21S, R5W, SECS. 19 & 30, T21S, R4W

9" Dia. Sandstone 4" Above Ground w/4" chisled "4" on top
(10") New 12" D. FIR S71°E 82' w/ well heeled single blaze
(82") New 32" D. FIR N68°E 275' w/ well heeled single blaze
(87") New 15" D. FIR N86°W 68' w/ well heeled single blaze
(12") New 15" D. FIR S61°W 325' w/ well heeled single blaze
N-S FENCE WEST 12'

1/4 CORNER TO SEC. 25, T21S, R5W & SEC. 30, T21S, R4W

1" Galv. Iron Pipe with Brass Cap Set 12" Above Ground
Marked "COUNTY SURVEYORS OFFICE"
T21S R
S 25 | S 30
W 25 | W 30
1964
FIR STUMP S37°W 541' w/ opened face
36" FIR SNA9, 10' HIGH, S20°E 163' w/ opened, rotted face
10" D. FIR S78°W 65' w/ well heeled single blaze
12" D. FIR S54°E 33' w/ well heeled single blaze
N-S FENCE WEST 29'

WIT. COR. TO SEC. 25 & 36, T21S, R5W; SECS 30 & 31, T21S, R4W

20 3/4" NORTH OF CORNER (REC. #14) 1 1/2" IRON PIPE - 25" BELOW GROUND
14" ASH (DEAD) N55°E 70' NO VISIBLE SCRIBING OR BLAZE
(14") New 18" Maple S66°E 623' (REC. 653') w/scrubing "45" in blaze
(18") New 16" Alder S6°W 658' w/scrubing visible in rotted face

1/4 CORNER TO SEC. 35 & 36, T21S, R5W

3/4" Iron Pipe 6" Above Ground
6" FIR STUMP S78°E 483' w/ well heeled blaze
(30") New 42" FIR STUMP N24°E 468' w/ well heeled blaze
(32") New 42" FIR S54 1/2°N 262' w/ well heeled blaze

SECTION CORNER TO SECS. 26, 27, 34, 35, T21S, R5W

3/4" Iron Rod 8" Above Ground
4" x 4" x 18" ROTTED POST ALONGSIDE
36" FIR, UNROOTED, ROTTED, APPROX. N13°E 158' w/ BLAZE AREA CUT OUT (OBT)
(8") New 20" CEDAR (REDWOOD) STUMP S69°W 372' w/ BLAZE AREA CUT OUT (OBT)
15" MAPLE S73°E 112' w/ well heeled blaze
27" MAPLE N34°W 338' (REC. 325'), BLAZE AREA ROTTED OUT
(67") New 18" D. FIR N81°E 438' w/ well heeled blaze
(15") New 18" I. CEDAR S51°W 233' w/ well heeled blaze

N.E. CORNER D.L.C. #37

CORNER IS A 40" D. FIR w/ well heeled blaze in a fence south & west

WITNESS CORNER TO N.E. COR. D.L.C. #37

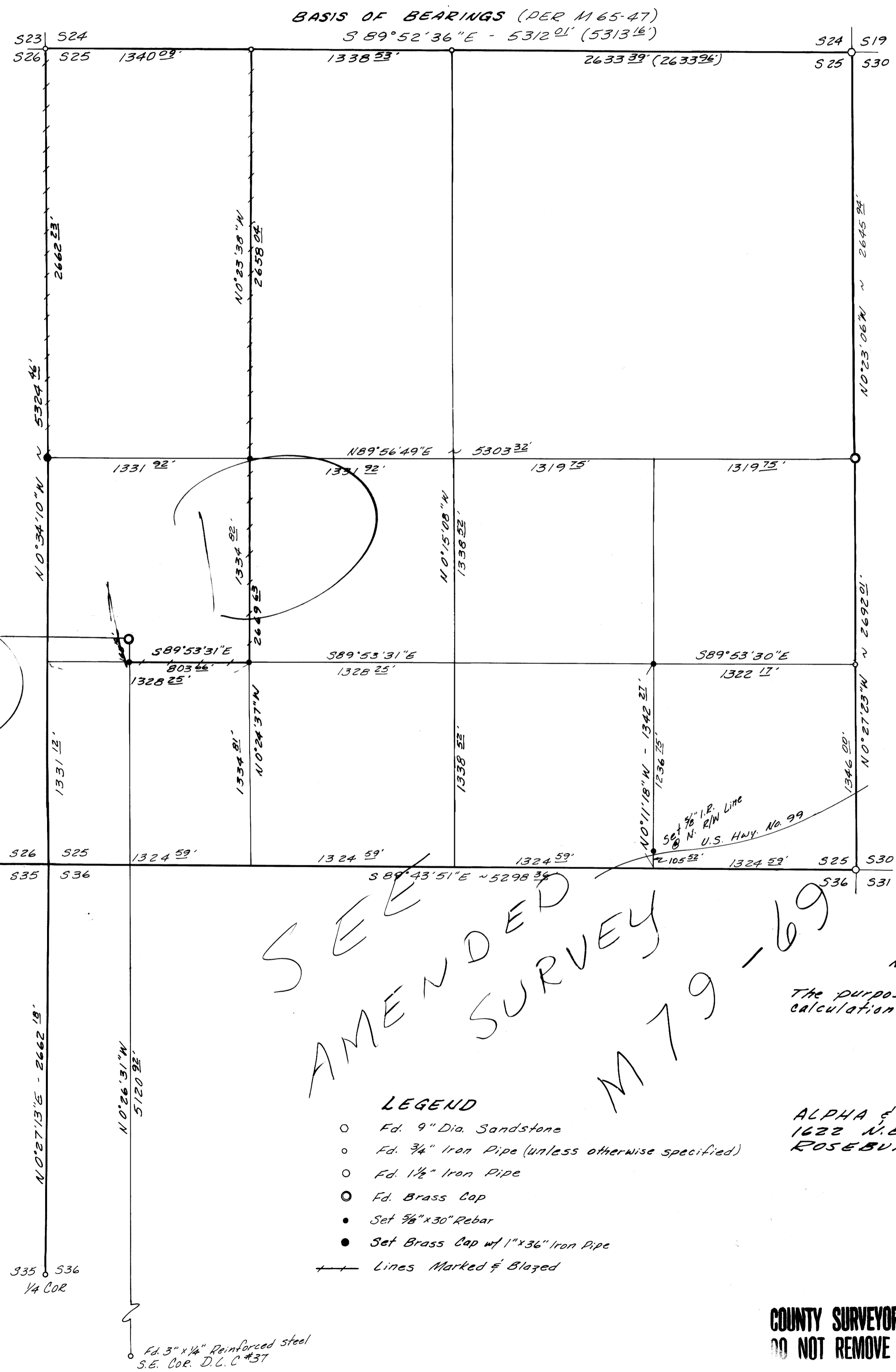
1" Galv. Iron Pipe with Brass Cap Set 6" Above Ground
Marked "DOUGLAS COUNTY SURVEYOR"
W.C.
T21S R5W
10 FT. S
N.E. TO
D.L.C. COR.
37
1979
18" D. FIR N51 1/2°E 858' FT. Double Blazed & Scribed
10" W. OAK S42°E 262' Double Blazed & Scribed
(25") New 30" Oak SNA9 N48°W 442' w/ well heeled double blaze

S.E. CORNER D.L.C. #37

3" x 1/2" Reinforced Steel 1' Above Ground w/ 3/4" Rebar & 1" Bolt on N. Edge.
3/4" Rebar on South Edge
34" Cedar S75°E 271' w/ Visible scribbing in partly heeled double blaze
(7") New 8" Hemlock N27°W 163' w/ well heeled double blaze

S. 1/4 CORNER TO SEC. 25, T21S, R5W, & SEC. 30, T21S, R4W

3/4" Iron Rod 6" Above Ground
1 DOUBLE BLAZED AND SCRIBED A 6" D. FIR, S71°E 51'
1/4 S30..BT"



SEE AMENDED SURVEY M79-69

NARRATIVE
The purpose of this plat is to correct calculation mistakes of M 79-13.

- LEGEND
○ Fd. 9" Dia. Sandstone
○ Fd. 3/4" Iron Pipe (unless otherwise specified)
○ Fd. 1 1/2" Iron Pipe
○ Fd. Brass Cap
● Set 3/4" x 30" Rebar
● Set Brass Cap w/ 1" x 36" Iron Pipe
+ Lines Marked & Blazed

ALPHA & OMEGA ENGINEERS, INC.
1622 N.E. VINE STREET
ROSEBURG, OREGON 97470

REGISTERED PROFESSIONAL LAND SURVEYOR
ROBERT B. KIMBERLING
OREGON
JULY 18, 1980
ROBERT B. KIMBERLING
1903