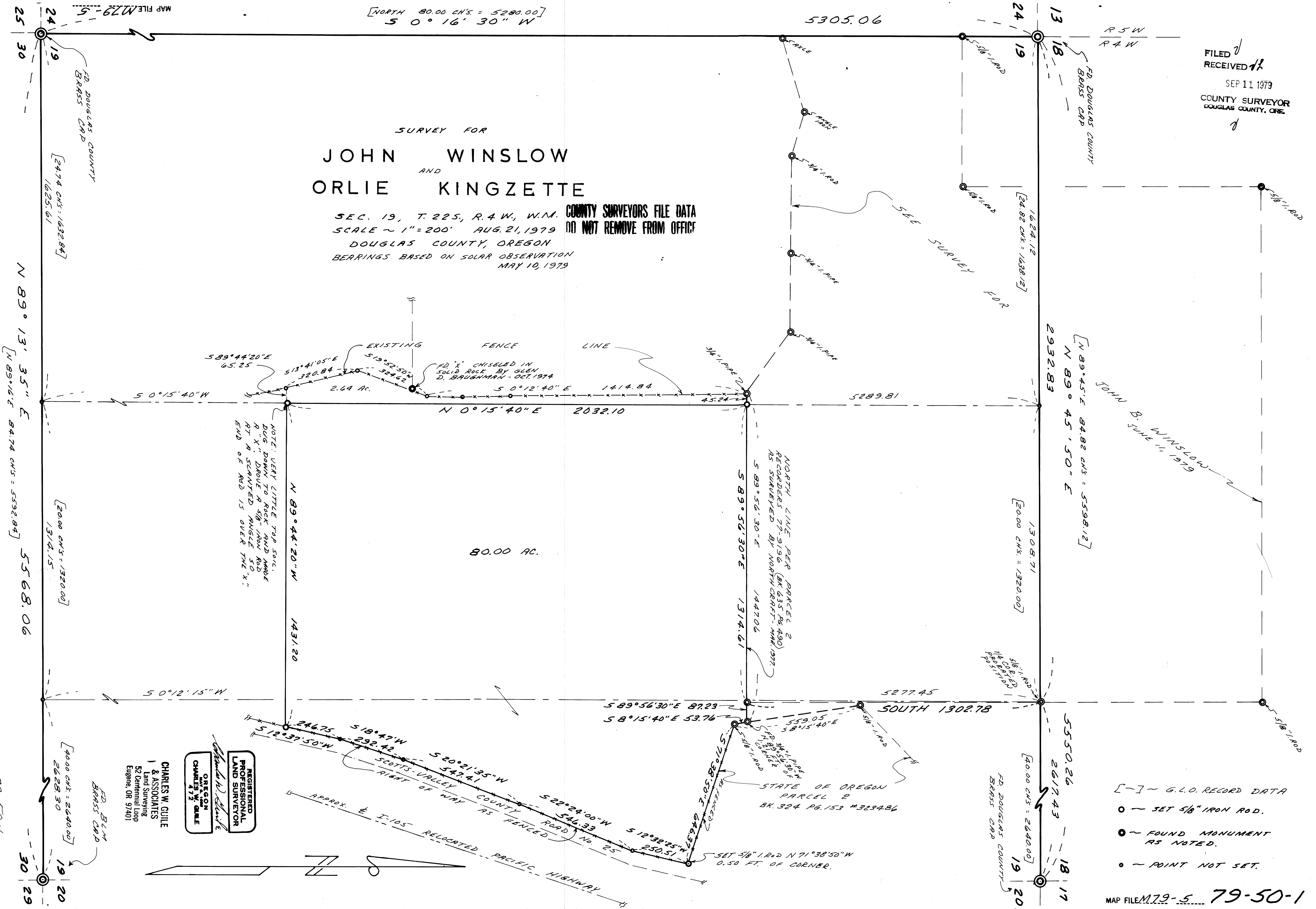


SURVEY FOR
JOHN WINSLOW
 AND
ORLIE KINGZETTE

SEC. 19, T. 225, R. 4 W., W.M.
 SCALE ~ 1" = 200' AUG. 21, 1979
 DOUGLAS COUNTY, OREGON
 BEARINGS BASED ON SOLAR OBSERVATION
 MAY 10, 1979

COUNTY SURVEYORS FILE DATA
 DO NOT REMOVE FROM OFFICE

FILED
 RECEIVED
 SEP 11 1979
 COUNTY SURVEYOR
 DOUGLAS COUNTY, ORE.



NOTE: VERY LITTLE TOP SOIL.
 DUG DOWN TO ROCK AND MADE
 R "X" MARKS. DROVE A 5/8" IRON ROD
 AT A STAMPEDED ANGLE TO
 END OF ROAD IS OVER THE "X"

REGISTERED
 PROFESSIONAL
 LAND SURVEYOR
CHARLES W. GUILLE
 OREGON
 CHARLES W. GUILLE
 472

CHARLES W. GUILLE
 & ASSOCIATES
 Land Surveying
 52 Centennial Loop
 Eugene, OR 97401

- [---] - G.L.O. RECORD DATA
- - SET 5/8" IRON ROD.
- - FOUND MONUMENT AS NOTED.
- - POINT NOT SET.