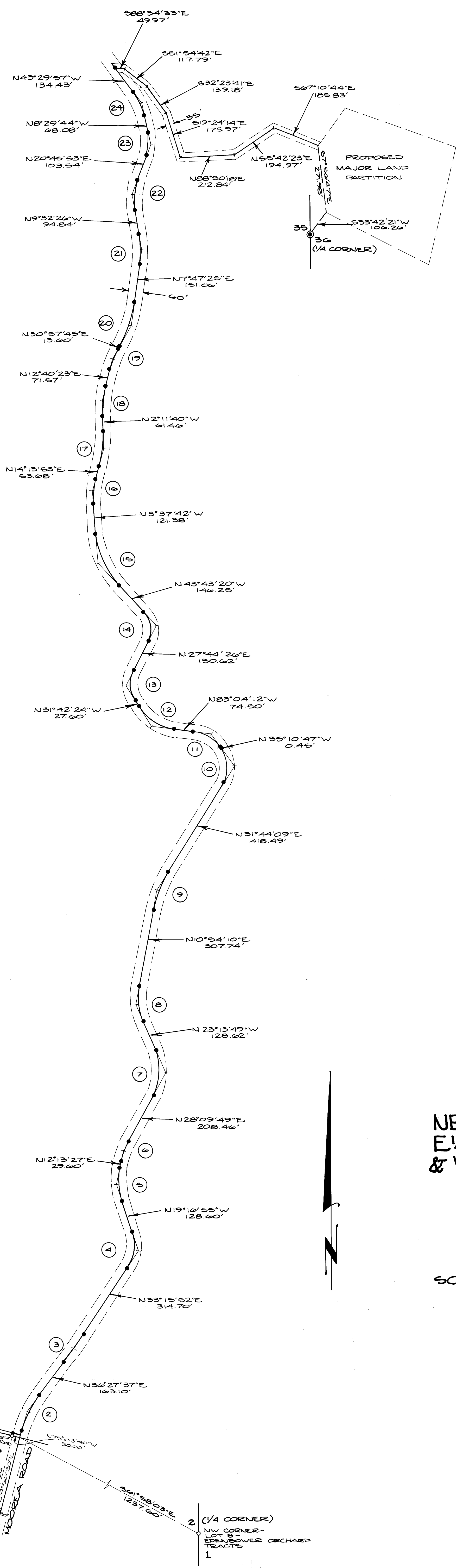


⊕ CURVE DATA:

COUNTY SURVEYORS FILE DATA
DO NOT REMOVE FROM OFFICE

FILED *pp*
RECEIVED *lh*
APR 30 1980
COUNTY SURVEYOR
DOUGLAS COUNTY, ORE.

- 24) D: 33°
Δ: 35°00'13"
R: 173.62'
A: 106.07'
CH: 104.43'
N25°59'50"W
T: 54.75'
- 23) D: 30°
Δ: 29°15'37"
R: 190.99'
A: 97.54'
CH: 96.48'
N6°08'05"E
T: 49.86'
- 22) D: 26°
Δ: 30°18'19"
R: 220.37'
A: 116.56'
CH: 115.21'
N5°36'44"E
T: 59.68'
- 21) D: 13°30°
Δ: 17°19'51"
R: 424.41'
A: 128.38'
CH: 127.89'
N0°52'30"W
T: 64.68'
- 20) D: 12°30°
Δ: 23°10'30"
R: 458.37'
A: 185.38'
CH: 184.12'
N19°22'35"E
T: 93.97'
- 19) D: 20°30°
Δ: 18°17'22"
R: 279.49'
A: 89.22'
CH: 88.84'
N21°49'04"E
T: 44.99'
- 18) D: 12°30°
Δ: 14°52'03"
R: 458.37'
A: 118.94'
CH: 118.61'
N5°14'21"E
T: 59.81'
- 17) D: 12°
Δ: 16°25'35"
R: 477.46'
A: 136.88'
CH: 136.41'
N6°01'06"E
T: 68.91'
- 16) D: 18°
Δ: 17°51'35"
R: 318.31'
A: 99.22'
CH: 98.82'
N5°18'06"E
T: 50.02'
- 15) D: 17°30°
Δ: 40°08'50"
R: 327.40'
A: 229.11'
CH: 224.46'
N23°40'31"W
T: 119.47'
- 14) D: 56°
Δ: 71°27'46"
R: 102.31'
A: 127.61'
CH: 119.50'
N7°59'27"W
T: 73.60'
- 13) D: 47°00°
Δ: 59°26'50"
R: 121.91'
A: 126.49'
CH: 120.89'
N1°58'59"W
T: 69.60'
- 12) D: 30°00°
Δ: 51°21'48"
R: 190.99'
A: 171.22'
CH: 165.64'
N57°23'18"W
T: 91.84'
- 11) D: 33°00°
Δ: 47°53'25"
R: 173.62'
A: 145.12'
CH: 140.93'
N59°07'30"W
T: 77.10'
- 10) D: 44°30°
Δ: 66°54'56"
R: 128.75'
A: 150.37'
CH: 141.97'
N1°43'19"W
T: 86.08'
- 9) D: 13°
Δ: 20°49'59"
R: 440.74'
A: 160.26'
CH: 159.37'
N21°19'10"E
T: 81.02'
- 8) D: 24°00°
Δ: 34°07'59"
R: 238.73'
A: 142.22'
CH: 140.13'
N6°09'50"W
T: 73.29'
- 7) D: 28°00°
Δ: 51°23'38"
R: 204.63'
A: 183.55'
CH: 177.46'
N2°28'00"E
T: 98.47'
- 6) D: 18°
Δ: 15°56'22"
R: 318.31'
A: 88.55'
CH: 88.27'
N20°11'38"E
T: 44.56'
- 5) D: 25°
Δ: 31°30'22"
R: 229.18'
A: 126.02'
CH: 124.44'
N3°31'44"W
T: 64.65'
- 4) D: 35°00°
Δ: 52°32'47"
R: 163.70'
A: 150.13'
CH: 144.92'
N6°59'28"E
T: 80.81'
- 3) D: 2°30°
Δ: 3°11'45"
R: 2491.12'
A: 138.95'
CH: 138.93'
N34°51'45"E
T: 69.49'
- 2) D: 13°30°
Δ: 21°31'17"
R: 424.41'
A: 159.42'
CH: 158.48'
N25°41'58"E
T: 80.66'



LEGEND:
 ● - SET 5/8" IRON ROD
 ⊙ - FD. BRASS CAP BY C.S.O.(1964)
 ○ - FD. 1" IRON PIPE UNLESS NOTED OTHERWISE

BASIS OF BEARINGS PER M56-75 A-E

NARRATIVE:
 EQUIPMENT USED - WILD T1, RED-1 E.D.M.
 WEATHER - CLEAR, COOL.
 SURVEY FOLLOWS EXISTING ROADWAY.
 COMPUTED BY D. BENTZ
 CHECKED BY D. HOPKINS

SURVEY IN
 NE 1/4, SECTION 2, T27S, R6W, W.M.
 E 1/2, SECTION 35, T26S, R6W, W.M.
 & W 1/2, SECTION 36, T26S, R6W, W.M.

FOR: CASEY MORGAN
 BY: BHW ENGINEERING & SURVEYING

SCALE: 1" = 200'

MARCH 1980

REGISTERED
 PROFESSIONAL
 LAND SURVEYOR
 OREGON
 JULY 18 1967
 DONALD A. BENTZ
 839

BHW ENGINEERING & SURVEYING, INC.
 1205 S.E. Court St.
 Roseburg, Oregon 97470

COUNTY SURVEYORS FILE DATA
DO NOT REMOVE FROM OFFICE

MAP FILE # 127-388

MAP FILE # 127-388