

SURVEY FOR U.S. FOREST SERVICE

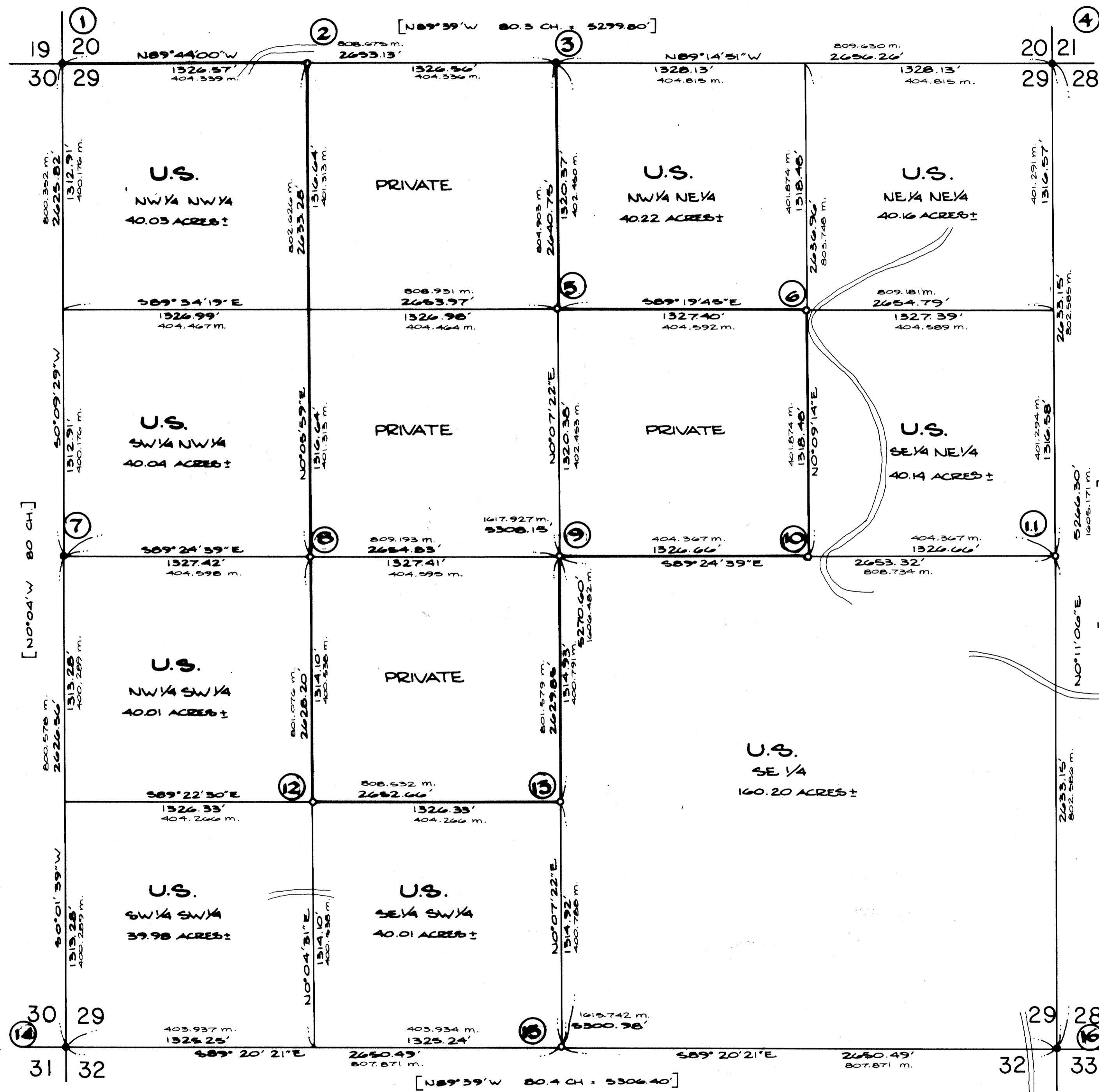
SECTION 29, TOWNSHIP 27 SOUTH, RANGE 1 WEST,
WILLAMETTE MERIDIAN

COUNTY SURVEYORS FILE DATA
DO NOT REMOVE FROM OFFICE

FILED &
RECEIVED JTH

APR 3 1980

COUNTY SURVEYOR
DOUGLAS COUNTY, OREGON



1. FOUND COUNTY SURVEYOR'S OFFICE BRASS CAP ON IRON PIPE (MARKED AS SHOWN).
SCRIBED:
24" D. FIRE 4.82" W 84.3
31" CEDAR STUM 1.025' GOOD SCALE
12" HEMLOCK N45° 57' (REC. 1001)
SCRIBED:
24" D. FIRE N20° 12.7' W 4.19 BT.
BRASS WASHER RLS 1005 IN BT. FACE.
SET POST AND SIGN 4.0' EAST.
2. SET 2 1/2" IRON PIPE WITH BRASS CAP (MARKED AS SHOWN).
SCRIBED:
24" D. FIRE N12° 5' W 4.9" W 4.20 BT.
7" D. FIRE S47° 9' 2" W 1.22 BT.
BRASS WASHERS IN BT. FACES - RLS 1005
3. FOUND COUNTY SURVEYOR'S OFFICE BRASS CAP ON IRON PIPE (MARKED AS SHOWN).
SCRIBED:
24" D. FIRE N36° 40' (REC. 407)
32" HEMLOCK S45° N45' 28.1'
1" VIS. SCRIBES
24" HEMLOCK S45° 24' W 2.51' ABOUT FACE.
SCRIBED:
24" D. FIRE S20° 48.6' W 4.23 BT.
BRASS WASHER IN BT. FACE - RLS 1005
FOUND 3/4" IRON ROD 0.2' SOUTH
4. FOUND COUNTY SURVEYOR'S OFFICE BRASS CAP ON IRON PIPE IN MOUND OF STONE, POST AND SIGN 3.2' EAST OF CORNER (MARKED AS SHOWN).
SCRIBED:
8" HEMLOCK S31° 18.7' VIS. SCRIBES
10" HEMLOCK S41° 20.1' VIS. SCRIBES
10" D. FIRE N15° 25.0' GOOD SCALE
10" D. FIRE N15° 25.0' GOOD SCALE
24" D. FIRE S41° 40.0' W 4.0' VIS. SCRIBES
24" D. FIRE STUMP N22° 70.6' VIS. SCRIBES
24" D. FIRE STUMP N22° 70.6' VIS. SCRIBES
5. SET 2 1/2" IRON PIPE WITH BRASS CAP (MARKED AS SHOWN).
SCRIBED:
7" D. FIRE N71° 12.3' ON 1/4" S 23 BT.
8" D. FIRE N21° 21.1' ON 1/4" S 29 BT.
BRASS WASHERS IN BT. FACES - BOTH S.T. FACES
SET POST AND SIGN 6.0' NORTH AND 3.0' EAST
6. SET 2 1/2" IRON PIPE WITH BRASS CAP (MARKED AS SHOWN).
SCRIBED:
10" HEMLOCK N81° 47.7' W 4.29 BT.
8" HEMLOCK S45° W 4.8' VIS. SCRIBES
BOTH TREES HAVE BRASS WASHERS IN BT. FACE - RLS 1004
FOUND 1/2" IRON PIPE (UNRECORDED) S10° 58' 37" W 12.27'
30" CEDAR STUMP 61" W 20"
7. FOUND COUNTY SURVEYOR'S OFFICE BRASS CAP ON IRON PIPE (MARKED AS SHOWN).
SCRIBED:
40" CEDAR S84° 19.1' VIS. SCRIBES
40" D. FIRE N12° 42.1' GOOD SCALE
10" HEMLOCK S41° 18.2' VIS. SCRIBES
10" HEMLOCK S41° 18.2' VIS. SCRIBES
SET POST AND SIGN 4.0' NORTH OF CORNER.
8. SET 2 1/2" IRON PIPE WITH BRASS CAP (MARKED AS SHOWN).
SCRIBED:
14" HEMLOCK S60° 8.5' W 4.29 BT.
40" HEMLOCK WEST 14.7' W 4.29 BT.
BRASS WASHERS IN BT. FACE - RLS 1004
SET POST AND SIGN 4.0' NORTH.
9. SET 2 1/2" IRON PIPE WITH BRASS CAP (MARKED AS SHOWN).
SCRIBED:
7" D. FIRE N10° 23.2' ON 1/4" S 29 BT.
8" D. FIRE N10° 23.2' ON 1/4" S 29 BT.
BRASS WASHERS IN BT. FACES - SET FIBERGLASS POST AND SIGN 8.0' EAST AND 5.0' SOUTH
10. SET 2 1/2" IRON PIPE WITH BRASS CAP (MARKED AS SHOWN).
SCRIBED:
12" CEDAR S22° 26.0' W 4.29 BT.
10" HEMLOCK N17° 44.9' W 4.29 BT.
BRASS WASHERS IN BT. FACES - RLS 1004
FOUND 1/2" IRON PIPE (NO RECORD) S71° 13.4' E 3.90'
11. AT PROPORTIONATE LOCATION, SET 2 1/2" IRON PIPE WITH BRASS CAP (MARKED AS SHOWN).
SCRIBED:
6" D. FIRE N45° 14.8' W 4.28 BT.
14" D. FIRE N10° 48.0' W 4.29 BT.
SET POST AND SIGN 3.0' EAST
BOTH TREES HAVE BRASS WASHERS - RLS 1005 - IN BT. FACE.
12. SET 2 1/2" IRON PIPE WITH BRASS CAP (MARKED AS SHOWN).
SCRIBED:
14" HEMLOCK S64° 32.2' W 4.29 BT.
8" HEMLOCK S84° 32.2' W 4.29 BT.
BOTH TREES HAVE BRASS WASHERS - RLS 1005 - IN BT. FACE.
SET POSTS AND SIGN 4.0' EAST AND NORTH.
13. SET 2 1/2" IRON PIPE WITH BRASS CAP (MARKED AS SHOWN).
SCRIBED:
12" CEDAR S76° 27.6' W 4.29 BT.
24" D. FIRE S10° 16.2' W 4.29 BT.
BOTH TREES HAVE BRASS WASHERS - SET FIBERGLASS POST AND SIGN 8.0' NORTH AND WEST.
FOUND 1/2" IRON PIPE BEARS 975 S79° 08.0' E 21.95' (411804) (UNRECORDED)
14. FOUND IRON PIPE WITH BRASS CAP (MARKED AS SHOWN).
SCRIBED:
30" D. FIRE S45° N15° 44.2' VIS. SCRIBES
24" D. FIRE STUMP N15° 44.2' VIS. SCRIBES
24" D. FIRE S45° N15° 44.2' VIS. SCRIBES
24" D. FIRE S45° N15° 44.2' VIS. SCRIBES
24" D. FIRE N15° 44.2' VIS. SCRIBES
24" D. FIRE N15° 44.2' VIS. SCRIBES
24" D. FIRE N15° 44.2' VIS. SCRIBES
SET FIBERGLASS POST 4.5' SOUTH OF CORNER.
15. AT PROPORTIONATE LOCATION, SET 2 1/2" IRON PIPE WITH BRASS CAP (MARKED AS SHOWN).
SCRIBED:
6" D. FIRE S11° 18.0' W 4.28 BT.
8" D. FIRE S11° 18.0' W 4.28 BT.
10" HEMLOCK N15° 24.1' W 4.29 BT.
TREES HAVE BRASS WASHERS - RLS 1004 IN BT. FACES.
FOUND ROCK OUT OF PLACE WITH "M" DUBBLE TO DETERMINE ORIGINAL LOCATION OF CORNER STONE.
16. FOUND 1/2" IRON PIPE WITH BRASS CAP (MARKED AS SHOWN).
SCRIBED:
80" IRON ROD AND ALUM. CAP IN STUMP N75° E 3.8'
80" IRON ROD AND ALUM. CAP IN 48" CEDAR STUMP
BOTH 80" IRON ROD AND ALUM. CAP IN 30" FIRE STUMP
BOTH 80" IRON ROD AND ALUM. CAP IN 30" FIRE STUMP
SET POST AND SIGN 3.0' WEST

LEGEND:

- SET CORNER MONUMENT
- FOUND CORNER MONUMENT
- [] COURSE PER GLO PLAT
- LINE POSTED WITH FIBERGLASS POSTS AND GOVERNMENT PROPERTY SIGNS.

"I, RONALD A. QUIMBY, A REGISTERED PROFESSIONAL LAND SURVEYOR IN THE STATE OF OREGON, HEREBY CERTIFY THAT THIS PLAT AND THE NOTES HEREON, OR ATTACHED, ARE A CORRECT REPRESENTATION OF A SURVEY I PERFORMED DURING NOVEMBER 1979 TO MARCH 1980 FOR THE U.S. FOREST SERVICE, IN ACCORDANCE WITH THE STATUTES OF THE STATE OF OREGON AND WITH THE ARTICLES OF MY CONTRACT."

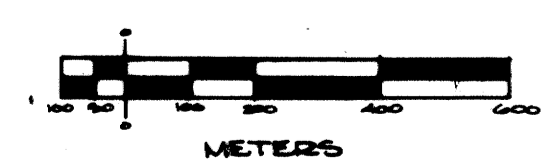
Ronald A. Quimby
RONALD A. QUIMBY
REGISTERED PROFESSIONAL LAND SURVEYOR
OREGON LICENSE NO. 1654

REGISTERED PROFESSIONAL LAND SURVEYOR
Ronald A. Quimby
OREGON
JULY 14, 1979
RONALD A. QUIMBY
1654

REGISTERED PROFESSIONAL LAND SURVEYOR
Roman E. Ware
OREGON
NOV. 14, 1979
ROMAN E. WARE
1005

BHW ENGINEERING & SURVEYING, INC.
1205 S.E. COURT - ROSEBURG, OREGON - 673-0165

MARCH 1980 SCALE: 1" = 400'



NOTE: ALL NEW BEARING TREES SCRIBED IN THIS SURVEY ARE MARKED WITH BRASS WASHERS STAMPED "RLS 1654" OR "RLS 1005" NAILED TO THE LOWER BLAZE OF EACH TREE.