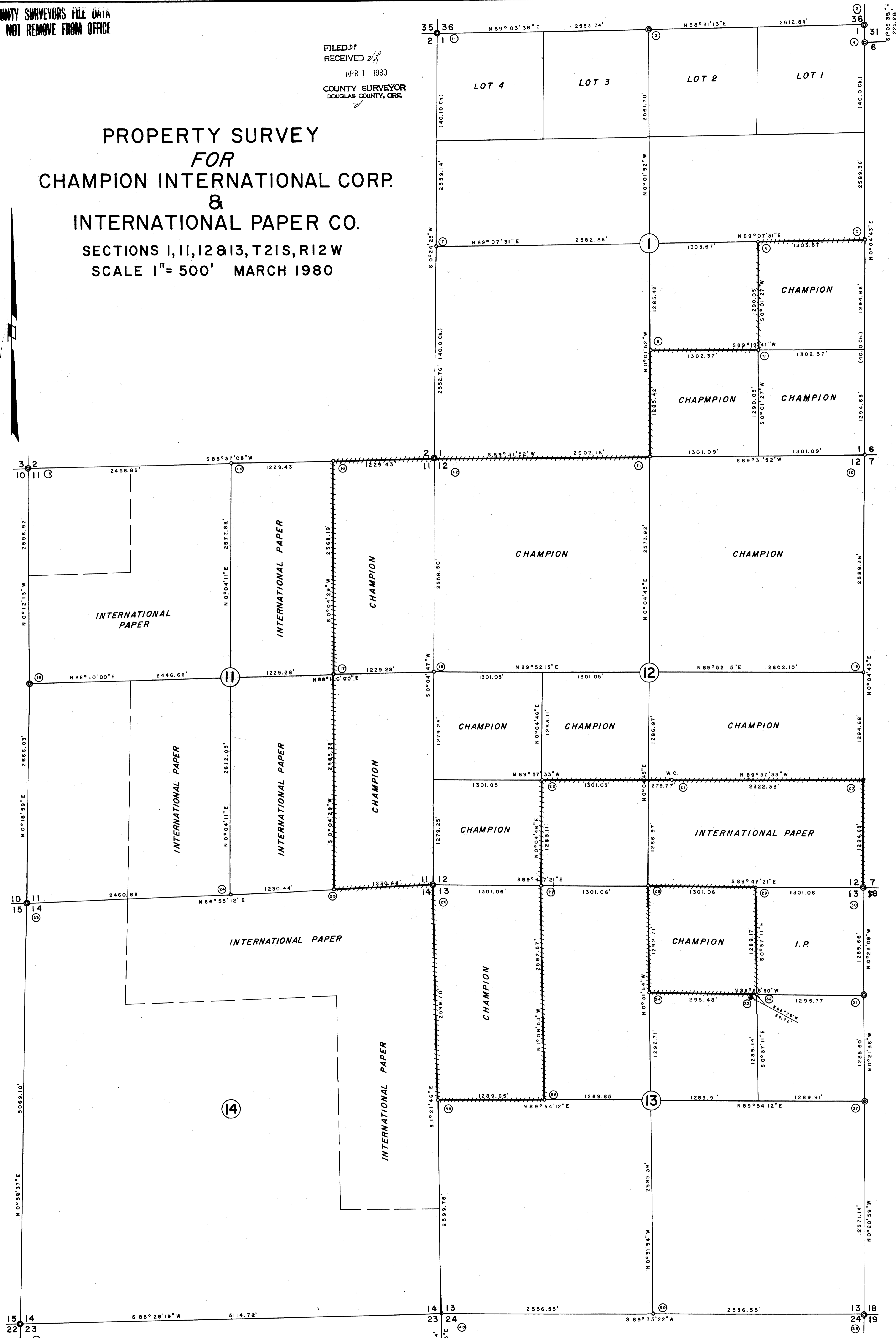


FILED &
RECEIVED *sh*
APR 1 1980
COUNTY SURVEYOR
DOUGLAS COUNTY, ORE.

PROPERTY SURVEY
FOR
CHAMPION INTERNATIONAL CORP.
&
INTERNATIONAL PAPER CO.
SECTIONS 1, 11, 12 & 13, T21S, R12W
SCALE 1" = 500' MARCH 1980



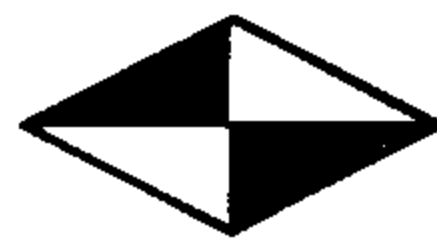
LEGEND
CORNERS FOUND \odot
SET 2" I.P.'S W/STAMPED BRASS CAPS \circ
PROPERTY LINES ESTABLISHED, STEEL FENCE POSTS
WITH ATTACHED CHAMPION OR I.P. SIGNS $|||||$

COUNTY SURVEYORS FILE DATA
DO NOT REMOVE FROM OFFICE

REGISTERED
PROFESSIONAL
LAND SURVEYOR
R.J. Hintz
OREGON
MAY 10, 1980
RICHARD J. HINTZ
497
RICHARD J. HINTZ
1890 N. 14TH ST.
COOS BAY, OREGON

NOTES
1. BASIS FOR BEARING, TRUE FROM SOLAR OBSERVATION
TAKEN IN THE NE 1/4 NE 1/4 OF SECTION 12.
2. THIS SURVEY WAS MADE IN ACCORDANCE WITH THE
B.L.M. MANUAL OF SURVEY INSTRUCTIONS.
3. REFER TO ACCOMPANYING NOTES FOR CORNER ACCESSORIES.
4. MEAN MAGNETIC DECLINATION 18°55'

March 25, 1980



Richard J. Hintz

Professional Land Surveyor

1890 N. 14th Street • Coos Bay, Oregon • 97420 • (503) 267-3806

FILED
RECEIVED *JRH*

APR 1 1980

COUNTY SURVEYOR
DOUGLAS COUNTY, ORE.

Corner Description Notes

Champion International Corporation
and

International Paper Company

Sections 1, 11, 12 & 13, T 21 S, R 12 W

1. $\frac{35}{2} | \frac{36}{1}$

Found broken $1\frac{3}{4}$ " IP lying on the ground from which a 48" fir stump brs. N 78° E, 1.0 ft.

Set stamped 2" IP/Br. Cap from which:

- 14" Fir brs. N 21° 30' E, 35.0 ft. scribed
- 48" Fir stump brs. N 78° 00' E, 1.0 ft.
- 22" Fir brs. S 51° 15' E, 40.3 ft. scribed
- 12" Hemlock brs. S 13° 00' W, 40.2 ft. scribed
- 10" Spruce brs. N 50° 30' W, 53.8 ft. scribed

Note: This corner was tied in by a Bonneville Power Administration crew on Dec. 2, 1948, at which time the IP was in place. The fir was a green tree, but was erroneously called a spruce by the crew. A copy of their field notes, Index No. A49-386A, may be obtained by contacting John Sink, Dept. of Energy, P. O. Box 3621, Portland, Oregon 97208.

(copies attached)

2. $\frac{1}{4}$ Corner

Found 2" aluminum pipe & 45" cedar BT stump, Renewal #17, C.S. 51/311. Durham's new BT's are gone - probably destroyed during the subsequent logging. I place an aluminum tag on a 36" fir stump which brs. S 47° W, 25.7 ft.

*#63 T21-12 x $\frac{36}{1}$
#98 T20-12 x*

3. $\frac{36}{1} | 31$

Found 2" aluminum pipe, Renewal #19, C.S. 54/1

Corner Description Notes

4. 1 | 31
6

Found Douglas County Surveyor's office IP/Br. Cap.
Renewal #18, C.S. 54/1

5. 1/4 Corner
1/6

Set stamped 2" IP/Br. Cap from which:
12" Fir brs. S 31° 30' E, 45.2 ft. scribed
10" Fir brs. N 25° 00' W, 11.0 ft. scribed

X 1/4 T 21-12
X 1/30 T 21-11

6. CE 1/16
Sec. 1

Mortared stamped Br. Cap in a sandstone outcrop from which:
6" Fir brs. S 21° 00' W, 17.2 ft. scribed

7. 1/4 Corner
2/1

Set stamped 2" IP/Br. Cap from which:
24" Alder brs. N 23° 30' E, 69.1 ft. scribed
18" Alder brs. South, 20.2 ft. scribed

#16 x

8. CS 1/16
Sec. 1

Set stamped 2" IP/Br. Cap from which:
14" Hemlock brs. S 5° 30' E, 47.8 ft. scribed
12" Fir brs. N 19° 30' W, 21.0 ft. scribed

9. SE 1/16
Sec. 1

Set stamped 2" IP/Br. Cap from which:
16" Fir brs. South 3.5 ft. scribed
10" Fir brs. N 70° 00' W, 14.5 ft. scribed

10. 1 | 6
12 | 7

Set stamped 2" IP/Br. Cap from which:
10" Fir brs. N 54° 00' E, 15.8 ft. scribed
12" Fir brs. S 31° 00' E, 9.7 ft. scribed
10" Hemlock brs. S 39° 00' W, 38.8 ft. scribed
12" Fir brs. N 43° 30' W, 9.8 ft. scribed
Corner falls in 'Cat' Road.

11. 1/4 Corner
1/12

Set 2" IP/stamped Br. Cap from which:
14" Fir brs. S 89° 15' E, 42.3 ft. scribed
14" Fir brs. N 8° 30' W, 33.9 ft. scribed

#16 x

Corner Description Notes

12. $\frac{2}{11} \mid \frac{1}{12}$

#67^x

Replaced 1½" ^{70" c} IP with a 2" IP/stamped Br. Cap from which:

- 16" Spruce brs. N 45° 00' E, 26.2 ft. scribed
- 72" Fir (snag) brs. S 48° 00' E, 27.7 ft. orig. BT
- 14" Alder brs. S 31° 00' W, 43.8 ft. scribed
- 10" Fir brs. N 84° 30' W, 32.4 ft. scribed

13. E 1/16

✓ $\frac{2}{11}$

Set 2" IP/stamped Br. Cap from which:

- 10" Fir brs. S 45° 45' W, 6.6 ft. scribed
- 8" Spruce brs. N 18° 00' W, 2.8 ft. scribed

14. ¼ Corner

#68^x $\frac{2}{11}$

Set 2" IP/stamped Br. Cap from which:

- 18" Spruce brs. N 35° 30' E, 31.3 ft. scribed
- 12" Spruce brs. S 72° 00' W, 42.5 ft. scribed

15. $\frac{3}{10} \mid \frac{2}{11}$

#69^x

Found original 70" spruce BT (stump) with nail in face, Renewal #40, C.S. 52/91

Set 2" IP/stamped Br. Cap from which:

- 16" Spruce brs. N 14° 30' E, 51.7 ft. scribed
 - 70" Spruce stump brs. N 21° 00' E (not S 21° W as per notes) 34.3 ft. orig. BT
 - 50" Spruce uproot brs. S 31° 45' E, 20.6 ft. to a R.R. spike driven in the upper quarter
 - 12" Spruce brs. S 35° 00' W, 69.3 ft. scribed
 - 8" Spruce brs. N 9° 00' W, 47.7 ft. scribed
- The 1½" IP, post and 5" spruce BT as per Renewal #40 were gone.

16. ¼ Corner

10/11

#70^x

Found original 40" fir BT (stump)

Set 2" IP/stamped Br. Cap from which:

- 10" Fir brs. S 10° 00' E, 16.0 ft. scribed
- 50" Fir stump brs. S 86° 00' W, 11.9 ft. orig. BT
- 8" Fir brs. N 29° 00' W, 13.7 ft. scribed

Corner Description Notes

Sections 1, 11, 12 & 13, T 21 S, R 12 W

17. CE 1/16
Sec. 11 ✓
Set 2" IP/stamped Br. Cap from which:
66" Cedar brs. N 57° 30' E, 20.4 ft. to 50d nail in the face, scribed
16" Alder brs. N 27° 30' W, 24.8 ft. scribed
18. ¼ Corner
#71 ✓ 11/12
Set 2" IP/stamped Br. Cap (offset 3.00 ft. South) from which:
14" Fir brs. North 2.9 ft. scribed
16" Fir brs. S 44° 00' W, 14.9 ft. scribed
19. ¼ Corner
12/7
Set 2" IP/stamped Br. Cap from which:
14" Hemlock brs. N 46° 00' E, 17.9 ft. scribed
18" Spruce brs. S 48° 30' W, 11.0 ft. scribed
20. S 1/16
✓ 12/7
Set 2" IP/stamped Br. Cap from which:
24" Fir brs. S 26° 30' E, 17.0 ft. scribed
18" Fir brs. S 63° 00' W, 16.1 ft. scribed
21. Witness
✓ Cor. for
CS 1/16
Sec. 12
Set 2" IP/stamped Br. Cap from which:
30" Hemlock brs. S 21° 30' E, 22.7 ft. to 50d nail in the face, scribed
50" Spruce brs. N 70° 30' W, 25.9 ft. to 50d nail in the face, scribed
22. ✓ SW 1/16
Sec. 12
Set 2" IP/stamped Br. Cap from which:
12" Fir brs. N 83° 00' E, 37.8 ft. scribed
12" Fir brs. S 10° 00' E, 40.3 ft. scribed
23.

10	11
15	14

Found Douglas County Surveyor's office IP/Br. Cap,
Renewal #58, C.S. 59/46

Corner Description Notes

Sections 1, 11, 12 & 13, T 21 S, R 12 W

24. $\frac{1}{4}$ Corn.

$\frac{11}{14}$
#12^x

Set 2" IP/stamped Br. Cap from which:

18" Fir brs. S 8° 30' E, 23.4 ft. scribed
22 " Hemlock brs. N 50° 00' W, 32.3 ft. scribed

25. E 1/16

$\frac{11}{14}$

Set 2" IP/stamped Br. Cap from which:

14" Twin spruce brs. N 77° 00' E, 3.6 ft. scribed
10" Fir brs. N 59° 30' W, 6.6 ft. scribed

26. $\frac{11}{14} | \frac{12}{13}$

#13^x

Found 3 original fir BT's (stumps)

Set 2" IP/stamped Br. Cap from which:

14" Fir brs. N 27° 30' E, 49.3 ft. scribed
16" Fir brs. S 34° 45' E, 13.7 ft. scribed
52" Fir stump brs. S 15° 00' E, 23.8 ft. orig. BT
48" Fir stump brs. S 17° 00' W, 26.4 ft. orig. BT
16" Fir brs. N 66° 00' W, 9.6 ft. scribed
50" Fir stump brs. N 16° 45' W, 73.0 ft. orig. BT
(Record N 12° 30' W, 77.9 ft.)

14" Fir brs. S 51° 30' W, 27.0 ft. scribed

27. W 1/16

$\frac{12}{13}$

Set 2" IP/stamped Br. Cap from which:

16" Hemlock brs. S 52° 00' E, 14.4 ft. scribed
14" Fir brs. N 72° 00' W, 14.7 ft. scribed

28. $\frac{1}{4}$ Corner

$\frac{12}{13}$
#14^x

Set 2" IP/stamped Br. Cap from which:

12" Fir brs. N 33° 45' E, 10.1 ft. scribed
8" Alder brs. S 22° 15' E, 17.6 ft. scribed

29. E 1/16

$\frac{12}{13}$

Set 2" IP/stamped Br. Cap from which:

50" Fir brs. S 8° 00' E, 21.9 ft. scribed
14" Alder brs. N 13° 30' W, 11.4 ft. scribed

30. $\frac{12}{13} | \frac{7}{18}$

Found Douglas County Surveyor's office IP/Br. Cap
Renewal #22, C.S. 54/110

Corner Description Notes

Sections 1, 11, 12, & 13, T 21 S, R 12 W

Page 6

31. N 1/16
13/18 Found Douglas County Surveyor's office IP/Br. Cap,
C.S. 54/110
32. ✓ NE 1/16
Sec. 13 Set 2" IP/stamped Br. Cap from which:
12" Hemlock brs. S 1° 30' W, 13.5 ft. scribed
Douglas County IP/Br. Cap 'NW Cor.' brs. S 66° 29' W,
24.72 ft.
50" Fir brs. N 34° 30' W, 40.7 ft. to 50d nail in the
face, scribed
County has used this tree for their BT, see Cor. 33 below
33. 'NW Cor.' Found Douglas County Surveyor's office IP/Br. Cap from which:
50" Fir brs. N 3° 00' W, 46.7 ft. scribed
34. ✓ CN 1/16
Sec. 13 Set 2" IP/stamped Br. Cap from which:
24" Cedar brs. S 16° 30' W, 14.3 ft. scribed
12" Hemlock brs. S 78° 30' W, 12.5 ft. scribed
35. ¼ Corner
*15 14/13 Set 2" IP/stamped Br. Cap from which:
16" Hemlock brs. N 63° 00' E, 20.1 ft. scribed
16" Alder brs. S 35° 30' W, 10.8 ft. scribed
36. CW 1/16
Sec. 13 Set 2" IP/stamped Br. Cap from which:
12" Twin white fir brs. S 70° 30' E, 36.1 ft. scribed
60" Cedar brs. S 23° 00' W, 81.1 ft. to 50d nail in the
face, scribed
37. ¼ Corner
13/18 Found Douglas County Surveyor's office IP/Br. Cap,
Renewal #24, C.S. 54/110
38. 13|18
24|19 Found 2" IP, Renewals #16, 23 & 59, C.S. 54/110

Corner Description Notes

Sections 1, 11, 12, & 13, T 21 S, R 12 W

39. $\frac{13}{24}$ Corner

\checkmark
#16

Set 2" IP/stamped Br. Cap from which:

22" Fir brs. N 25° 00' E, 13.4 ft. scribed

18" Fir brs. S 66° 45' W, 42.5 ft. scribed

Corner falls in 'Cat' road

40. $\frac{14}{23} | \frac{13}{24}$

#77 \checkmark

Set 2" IP/stamped Br. Cap from which:

36" Fir brs. N 87° 45' E, 162.9 ft. scribed

52" Spruce brs. S 58° 00' E, 257.2 ft. to 50d nail in the face, scribed

BT overhangs Franz Creek

41. $\frac{15}{22} | \frac{14}{23}$

Found IP/Br. Cap

Renewals #6 and 25, C.S. 55/148

42. $\frac{35}{2} | \frac{36}{1}$

Found Douglas County Surveyor's office IP/Br. Cap,

Renewal #29, M42-27

NOTE: All distances are taken to a 50d nail driven in the side of each BT at its approximate center, unless noted. A Champion International Timberlands aluminum location tag was attached to each BT.

Richard J. Hintz, PLS #497

March 26, 1980

COMPUTATIONS

BPA-112
Rev. 11-12-40

UNITED STATES
DEPARTMENT OF THE INTERIOR
BONNEVILLE POWER ADMINISTRATION

A49-387

FIELD NOTES

Date Nov 20, 1948 Sheet No. 2 of 2
Line

Field Notes of { Transit Party No. _____
Level Party No. _____

Description of survey:

Tie to sec. 30 3936
217

T205 P12 W

Instrumentman Probert

Recorder _____

Rodmen _____

Chainmen Wagner

Notes approved: Wilson J. Jeffers Chief of Party.

Received Gardner One Office Dec. 12, 1948

Computed by _____

Plotted by _____

Checked by H. A. H.

Remarks:

(SEE FOLDER FOR REMAINING INFO.)