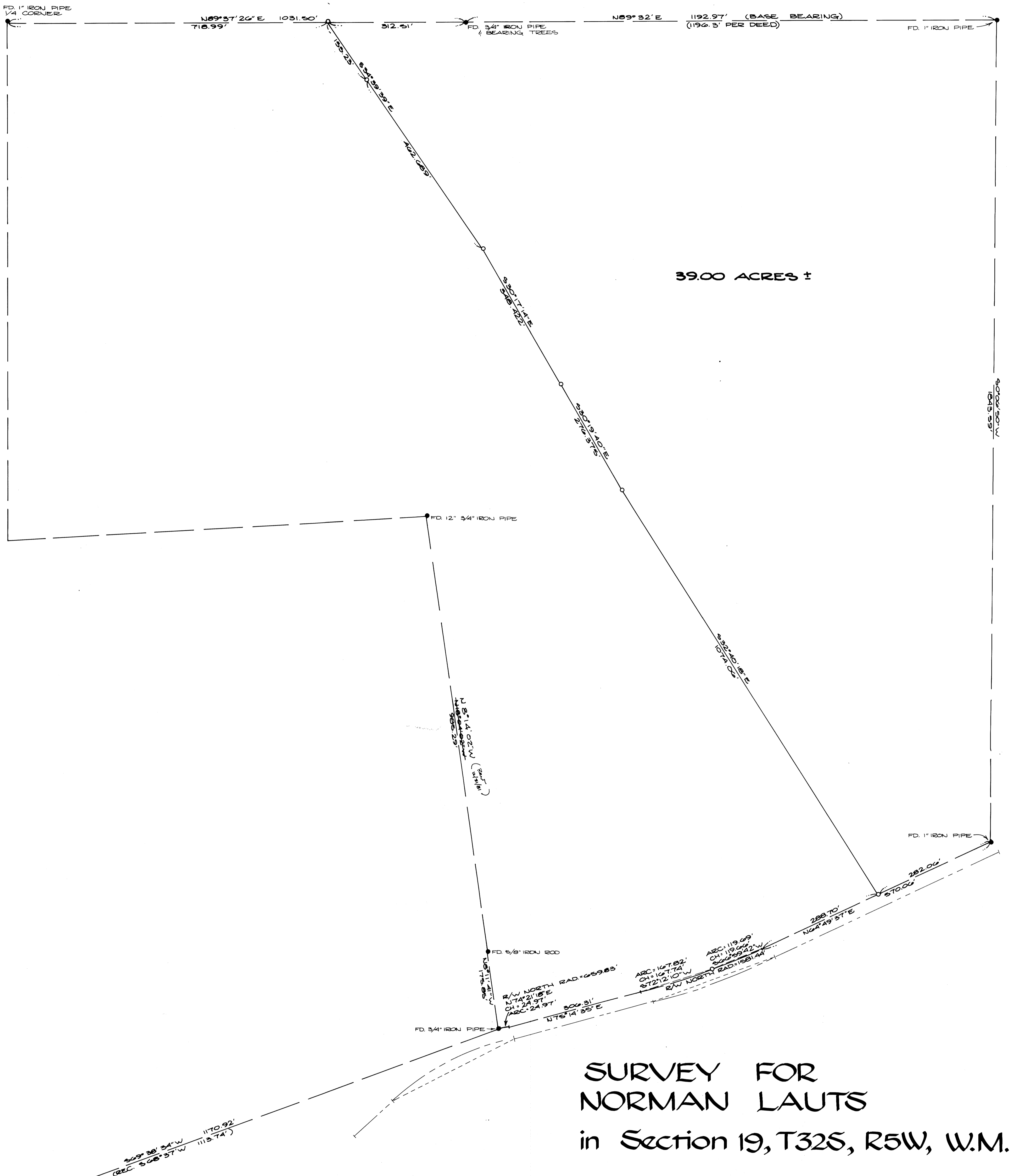


FILED /
 RECEIVED 28
 AUG 24 1979
 COUNTY SURVEYOR
 WASHINGTON COUNTY, ORE

MAP FILE M29 - 3



39.00 ACRES ±

SURVEY FOR
 NORMAN LAUTS
 in Section 19, T32S, R5W, W.M.

scale: 1" = 100'
 July, 1979

COUNTY SURVEYORS FILE DATA
 DO NOT REMOVE FROM OFFICE

REGISTERED
 PROFESSIONAL
 LAND SURVEYOR
 Romano E. Ware
 OREGON
 NOV. 14, 1972
 ROMANSO E. WARE
 1005

LEGEND
 ● - FD MONUMENT
 AS NOTED
 ○ - SET 3/8" IRON ROD

 BASE BEARING
 PER C.S. 42/45



24 19
 25
 30
 FD 1 1/2" IRON PIPE
 SECTION CORNER

BHW Engineering & Surveying, Inc.

MAP FILE M29 - 3