

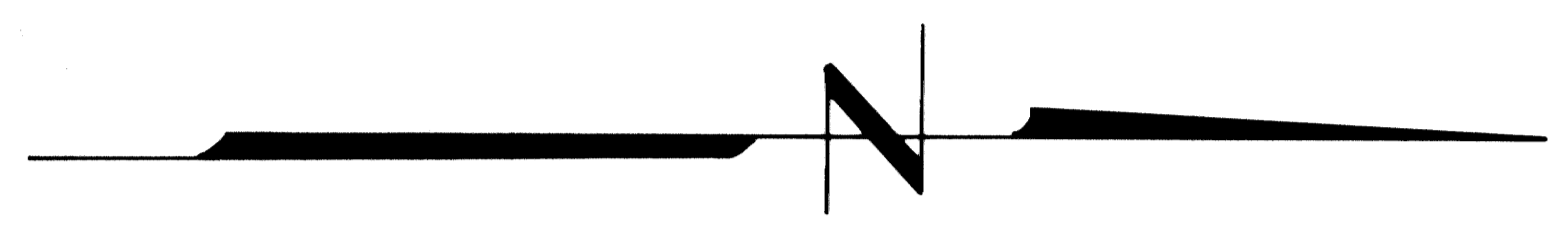
SURVEY IN SECTION 1 & N½, SECTION 12, T24S, R7W, W.M.

COUNTY SURVEYORS FILE DATA
DO NOT REMOVE FROM OFFICE

FOR: ROY SCOTT
BY: BHW ENGINEERING & SURVEYING

FILED &
RECEIVED *dh*
MAR 24 1980
COUNTY SURVEYOR
DOUGLAS COUNTY, ORE.
dp

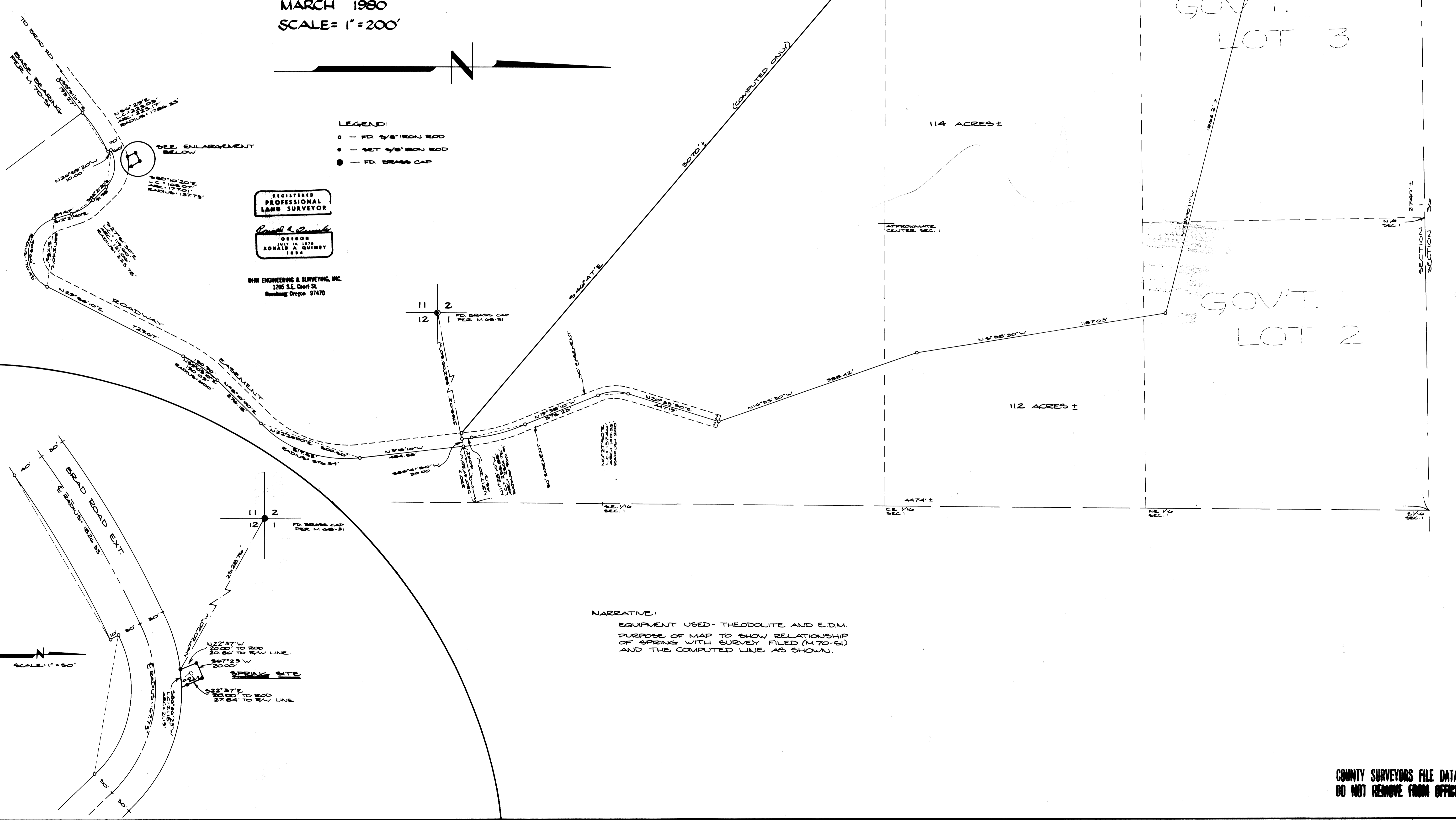
MARCH 1980
SCALE = 1" = 200'



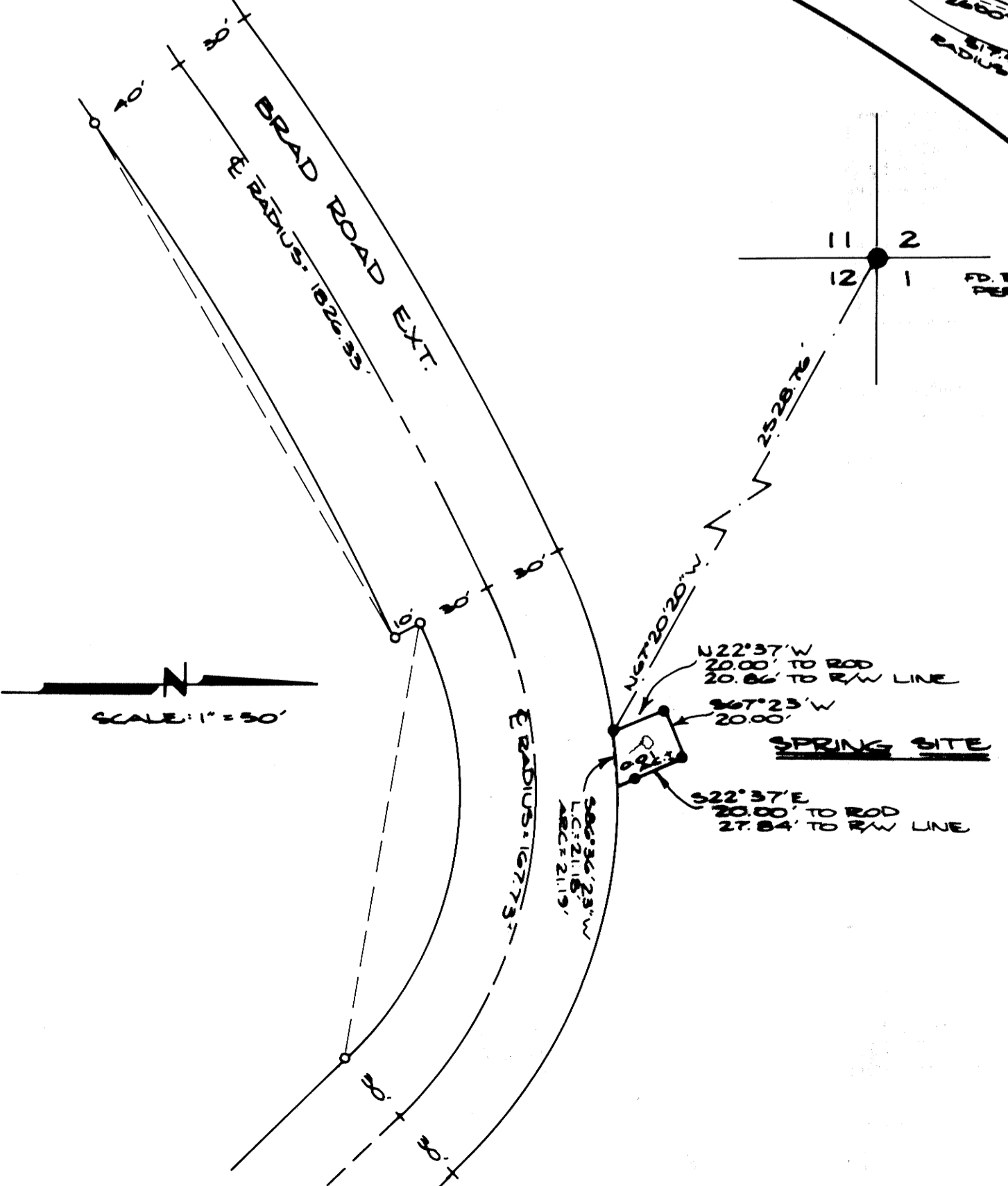
- LEGEND:
- — FD. 5/8" IRON ROD
 - — SET 5/8" IRON ROD
 - — FD. BRASS CAP

REGISTERED
PROFESSIONAL
LAND SURVEYOR
Ronald A. Quimby
OREGON
JULY 14, 1958
RONALD A. QUIMBY
1654

BHW ENGINEERING & SURVEYING, INC.
1205 S.E. Court St.
Hood River, Oregon 97470



NARRATIVE:
EQUIPMENT USED - THEODOLITE AND E.D.M.
PURPOSE OF MAP TO SHOW RELATIONSHIP
OF SPRING WITH SURVEY FILED (M70-51)
AND THE COMPUTED LINE AS SHOWN.



COUNTY SURVEYORS FILE DATA
DO NOT REMOVE FROM OFFICE