

SURVEY IN SECTIONS 33 & 34, T31S, R6W, W.M.

For: Roseburg Lumber
By: BHW Engineering & Surveying

SCALE: 1" = 400'
MARCH 1980

REGISTERED
PROFESSIONAL
LAND SURVEYOR

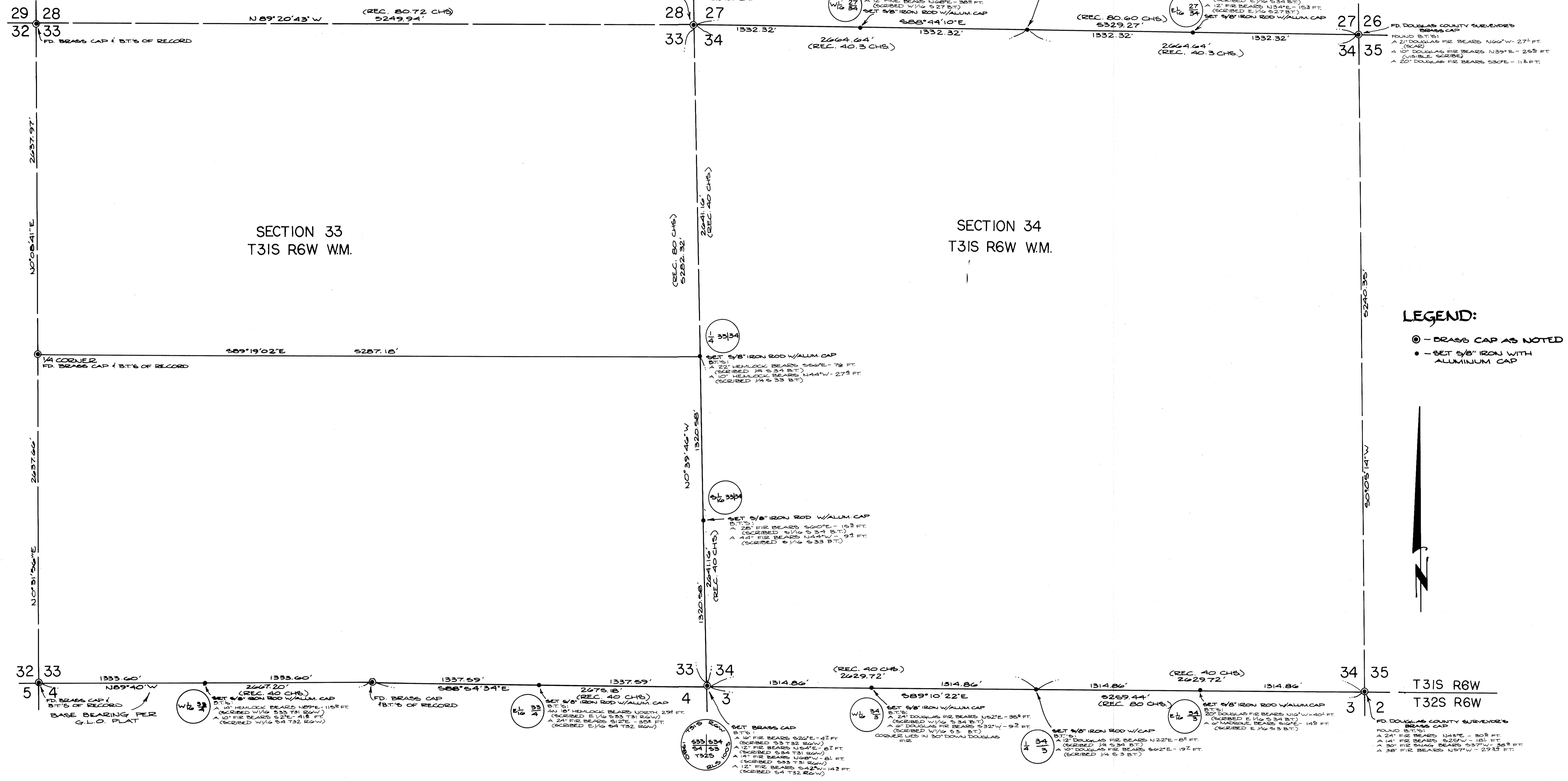
Ronald A. Quimby
OREGON
JULY 14, 1978
RONALD A. QUIMBY
1634

BHW ENGINEERING & SURVEYING, INC.
1205 S.E. Court St.
Roseburg, Oregon 97470

NARRATIVE - MEASURING ACCOMPLISHED BY EDM AND THEODOLITE. SOLID LINES SHOWN ARE DESIGNATED IN THE FIELD BY RED RIBBON, TREES BLAZED AND PAINTED (YELLOW), AND BOUNDARY TAGS.

COUNTY SURVEYORS FILE DATA
DO NOT REMOVE FROM OFFICE

FILED &
RECEIVED &
MAR 21 1980
COUNTY SURVEYOR
DOUGLAS COUNTY, OREG.
&



LEGEND:
 ○ - BRASS CAP AS NOTED
 ● - SET 5/8" IRON WITH ALUMINUM CAP



COUNTY SURVEYORS FILE DATA
DO NOT REMOVE FROM OFFICE