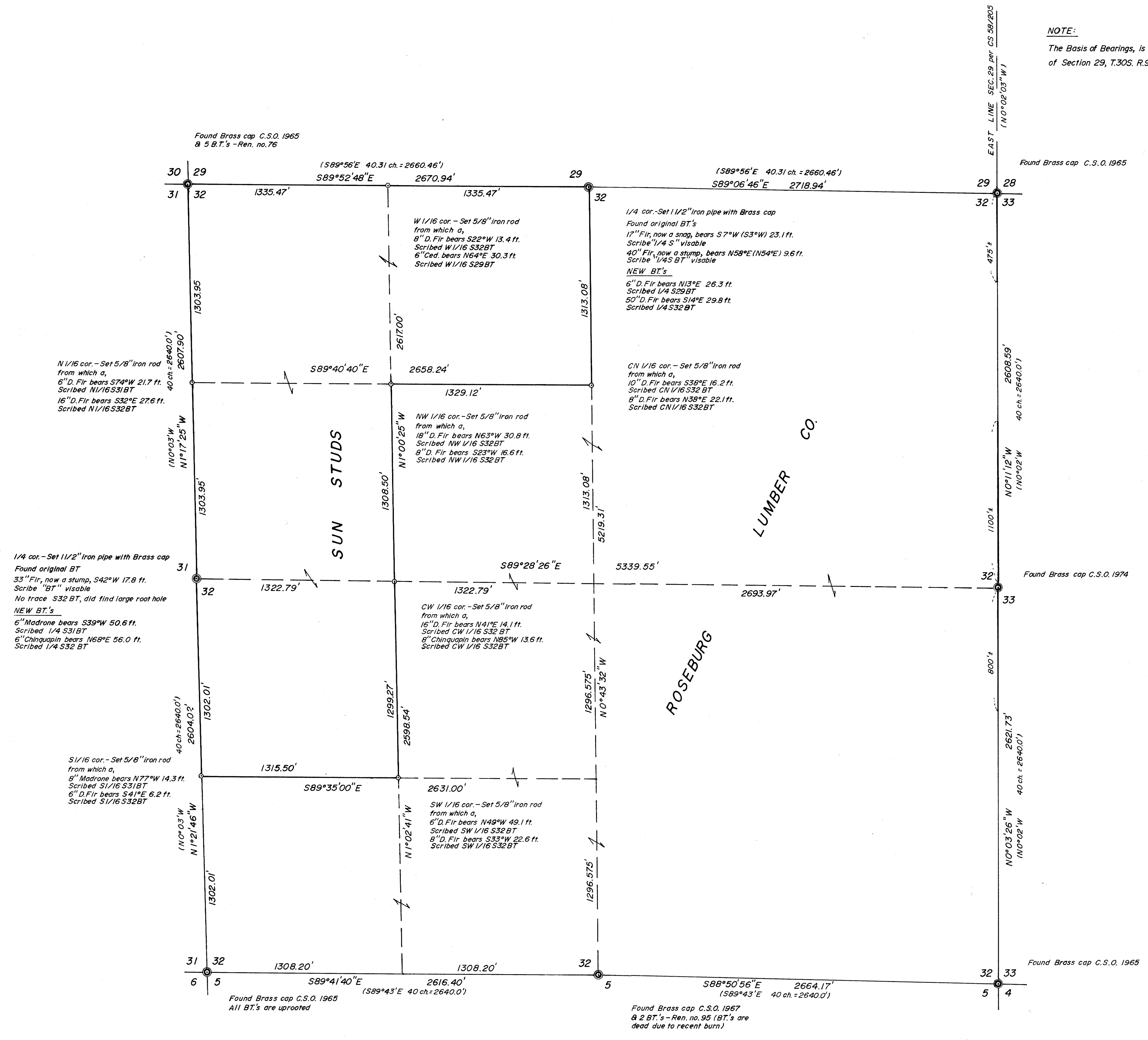


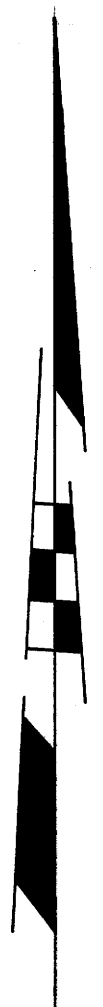
SECTION 32, T.30S., R.9W. W.M.



NOTE:
The Basis of Bearings, is based on the East line
of Section 29, T.30S. R.9W.W.M., per CS 58/205.

NARRATIVE:
This survey was accomplished using a combination of equipment:
A Lietz TM-6 with a EDM (K&E Auto Ranger) and a steel chain.
The heavy lines shown are designated in the field by red & blue flagging,
the trees are blazed & painted yellow.
The corners found & set are as shown on the annexed map.

Denotes G.L.O. RECORD ()



REGISTERED
PROFESSIONAL
LAND SURVEYOR
Eugene A. Bloom
OREGON
747 So. 11th
EUGENE, A. BLOOM
492

SUBDIVISION OF SECTION 32, T.30S. R.9W. W.M.	
FOR: ROSEBURG LUMBER CO.	SCALE 1" = 400'
BY: A A SURVEYING SERVICE, INC. P.O. BOX 454, Roseburg, Oregon 97470	DRAWN BY ead REVISED
DATE 3/6/80	APPROVED BY
	DRAWING NUMBER 142-79 FB30-32-33-34-35