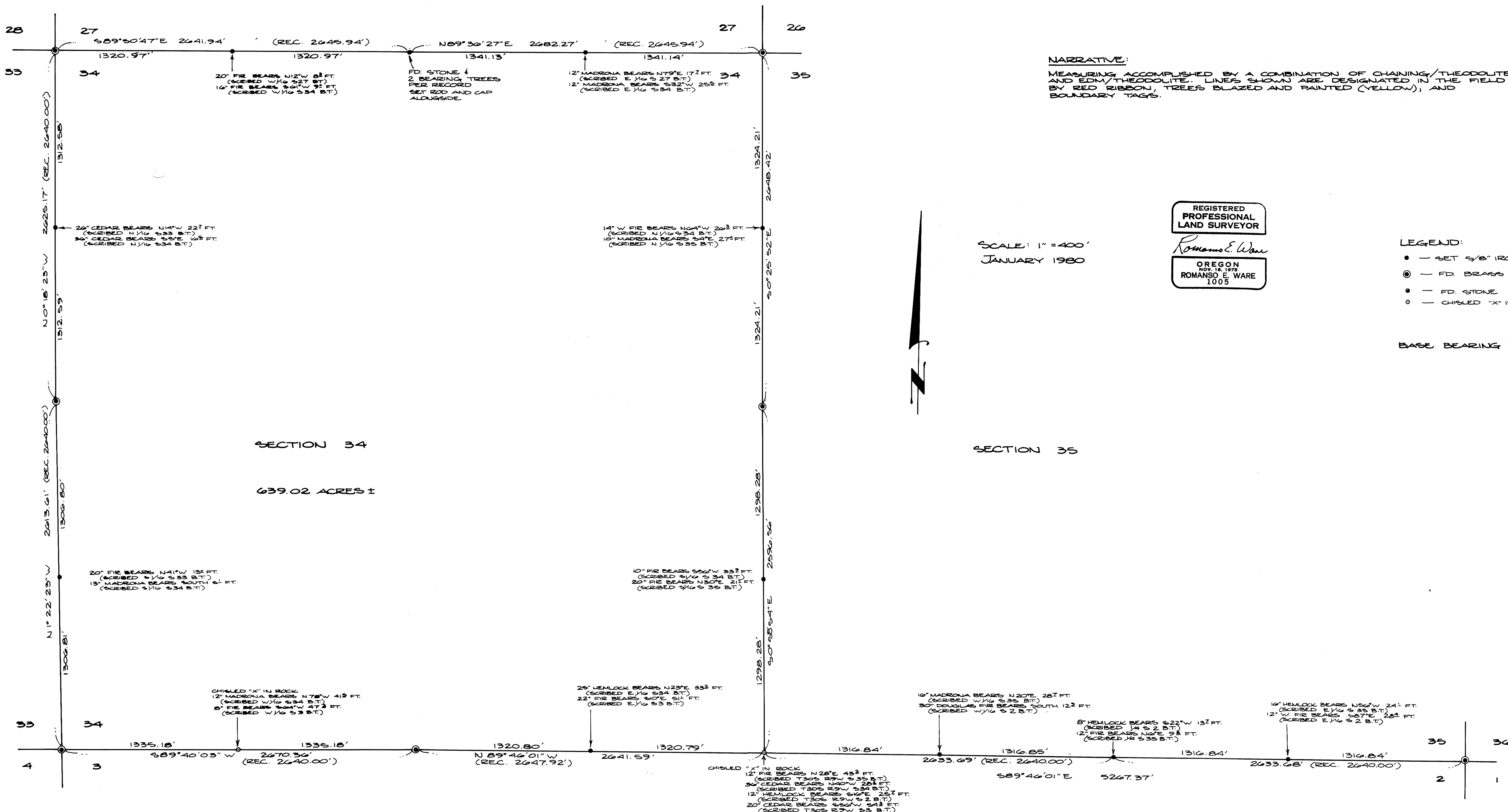


SURVEY OF SECTION 34 AND THE SOUTH LINE OF SECTION 35, TOWNSHIP 30 SOUTH, RANGE 9 WEST, WILLAMETTE MERIDIAN

FOR: Roseburg Lumber  
 BY: BHW Engineering & Surveying  
 1205 S.E. Court  
 Roseburg, Oregon



NARRATIVE:  
 MEASURING ACCOMPLISHED BY A COMBINATION OF CHAINING/THEODOLITE AND EDM/THEODOLITE. LINES SHOWN ARE DESIGNATED IN THE FIELD BY RED RIBBON, TREES BLAZED AND PAINTED (YELLOW), AND BOUNDARY TAGS.

REGISTERED PROFESSIONAL LAND SURVEYOR  
 Romano E. Ware  
 OREGON  
 NOV. 18, 1978  
 ROMANSO E. WARE  
 1005

SCALE: 1" = 400'  
 JANUARY 1980

- LEGEND:
- — SET 5/8" IRON ROD W/ALUMINUM CAP
  - ⊙ — FD BRASS CAP & B.T.'S OF RECORD
  - — FD. STONE
  - ⊙ — CHISELED "X" IN ROCK

BASE BEARING PER G.L.O. PLAT