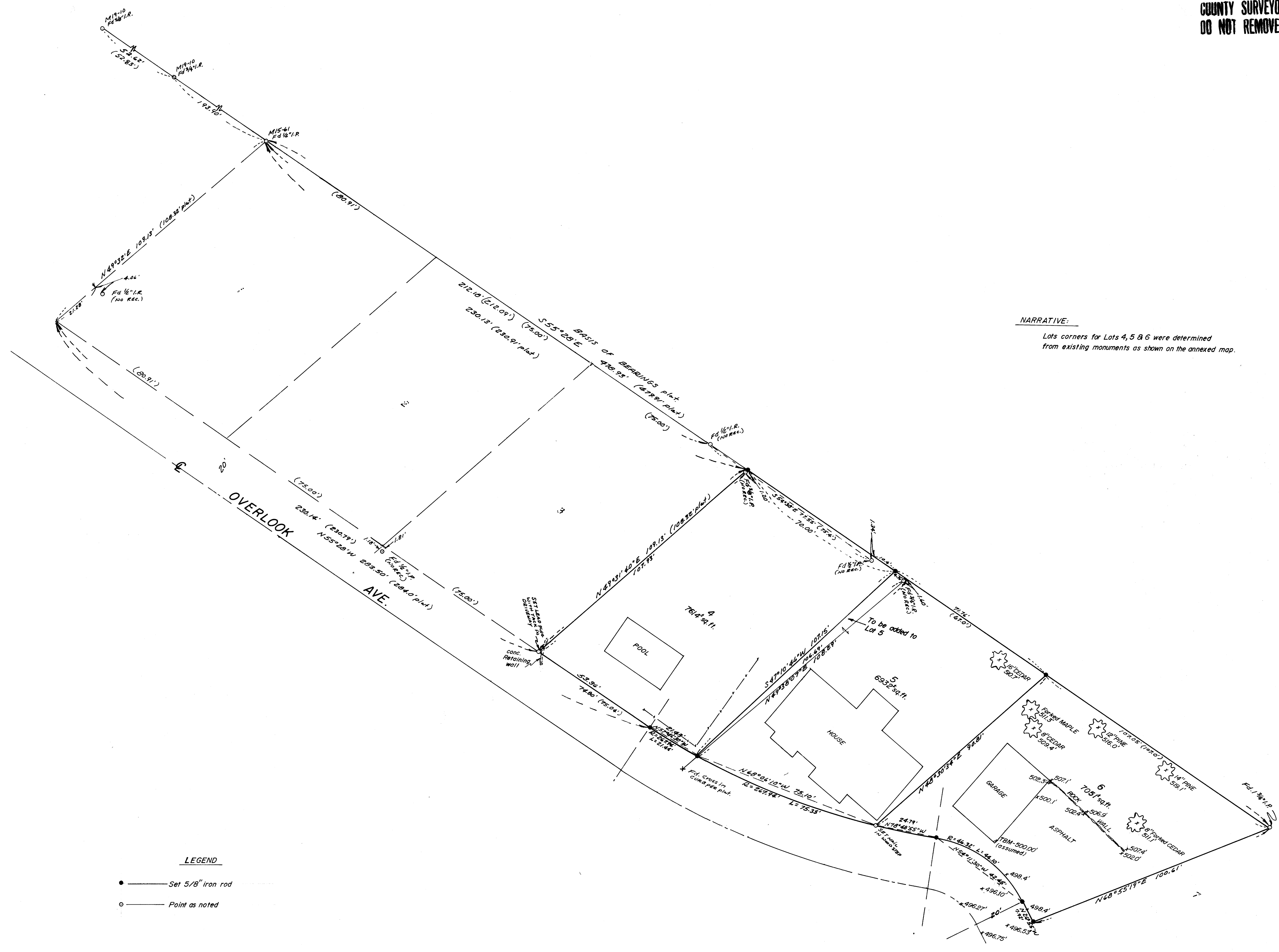
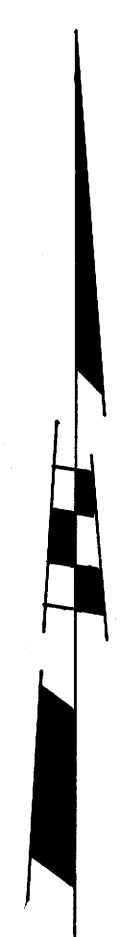


COUNTY SURVEYORS FILE DATA
DO NOT REMOVE FROM OFFICE

FILED AS
COUNTY SURVEYOR
ROSEBURG COUNTY, ORE



NARRATIVE:
Lots corners for Lots 4, 5 & 6 were determined from existing monuments as shown on the annexed map.



LEGEND

- Set 5/8" iron rod
- Point as noted

COUNTY SURVEYORS FILE DATA
DO NOT REMOVE FROM OFFICE

REGISTERED PROFESSIONAL LAND SURVEYOR
Eugene A. Bloom
OREGON
DATE: 12-18-80
EUGENE A. BLOOM

SURVEY FOR PROPERTY CORNERS - LOTS 4, 5 & 6 REPLAT OF LOTS 12 TO 24 INCL. OVERLOOK ADDITION - NW 1/4 S. 19 T. 27 S. R. 5 W. W. 1/2 M.			
FOR: JEFF LATIMER	SCALE: 1"=20'	DRAWN BY: EOB	REVISED:
BY: A.A. SURVEYING SERVICE INC. P.O. BOX 454, ROSEBURG, OREGON 97470			
DATE: 1/80	APPROVED BY:	DRAWING NUMBER: 138-79 FB28	