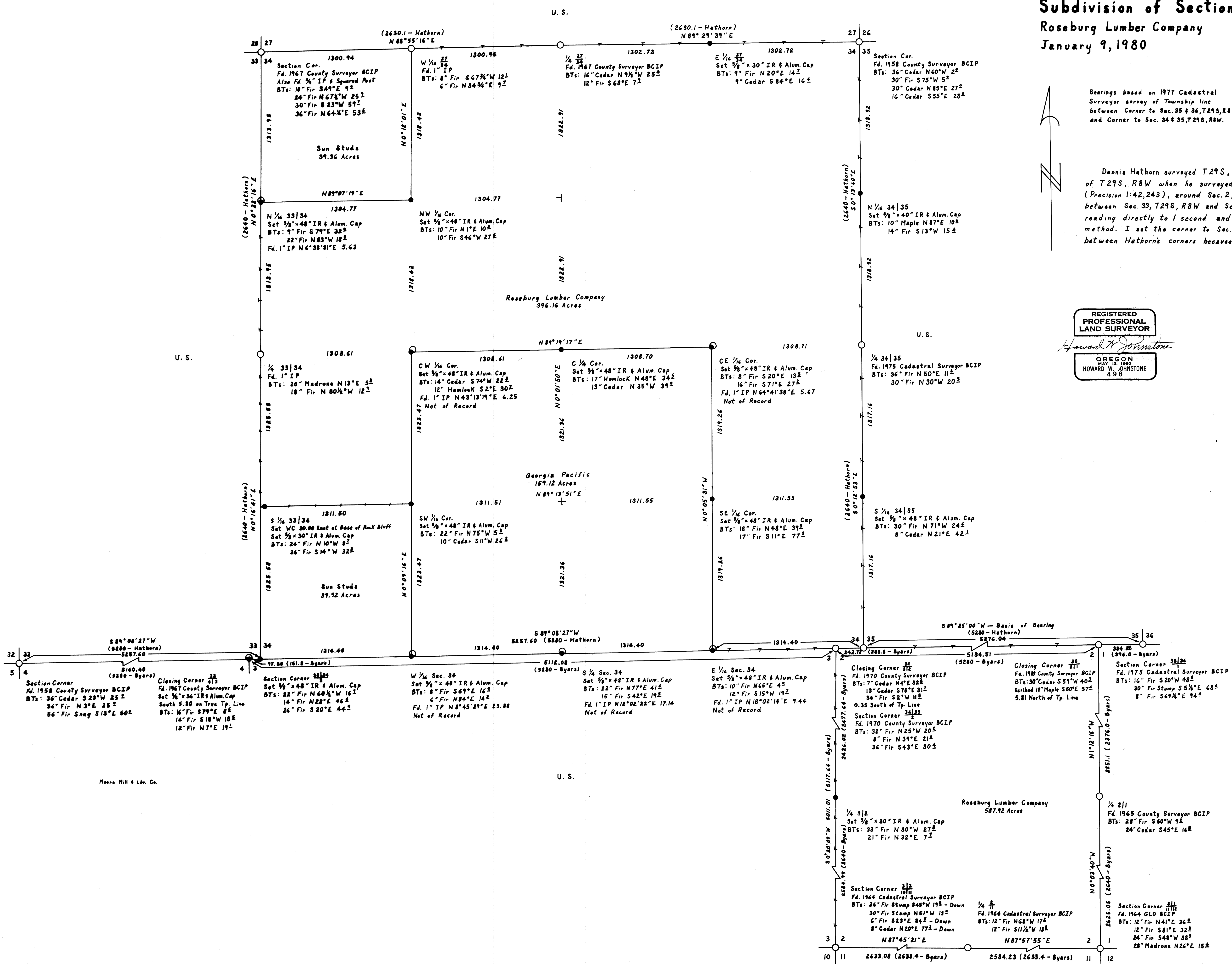


Subdivision of Section 34, T29S, R8W, W.M.

Roseburg Lumber Company
Roseburg, Oregon
January 9, 1980
Scale: 1"=400'



Bearings based on 1977 Cadastral Surveyor survey of Township line between Corner to Sec. 35 & 36, T29S, R8W and Corner to Sec. 34 & 35, T29S, R8W.

Legend
○ Monument Found
● Monument Set
— Line Blazed
— Line Blazed & Referenced to Metal Tags

Dennis Hathorn surveyed T29S, R8W in 1855. In 1882, William Byars resurveyed the South line of T29S, R8W when he surveyed T30S, R8W. I ran a closed traverse around Sec 34, T29S, R8W (Precision 1:42,243), around Sec. 2, T30S, R8W (Precision 1:65,270), and along the Township line between Sec. 33, T29S, R8W and Sec. 4, T30S, R8W (Precision 1:19,957). I used a Jena theodolite reading directly to 1 second and a Mac I.E. EDM. Adjustments were made by the Crandall method. I set the corner to Sec. 33 & 34, T29S, R8W by proportionate distance on a true line between Hathorn's corners because of the apparent discrepancy of Byars' survey.

REGISTERED PROFESSIONAL LAND SURVEYOR
Howard W. Johnston
OREGON
MAY 13, 1980
HOWARD W. JOHNSTONE
498

Moore Hill & Lib. Co.

Roseburg Lumber Company
587.92 Acres