

COUNTY SURVEYORS FILE DATA  
DO NOT REMOVE FROM OFFICE

FILED  
RECEIVED

DEC 17 1979

COUNTY SURVEYOR  
DOUGLAS COUNTY, OREGON

# SECTION SUBDIVISION SECTION 25, T21S, R5W, W.M. DOUGLAS COUNTY, OREGON

FOR  
DALE BLACK  
AND

GUISTINA LUMBER COMPANY

DEC. 1979 SCALE: 1" = 500'

REGISTERED  
PROFESSIONAL  
LAND SURVEYOR  
*Russell T. Pinard*  
OREGON  
JULY 16, 1971  
RUSSELL T. PINARD  
958

### FOUND CORNERS

#### SECTION CORNER TO SECS. 23, 24, 25, 26, T21S, R5W

- 3/4" GALV. PIPE 2" ABOVE GROUND
- 60" D. FIR N9°W 221' (REC. 2208)
- 10" ROTTED FIR STUMP N64°E (REC. N172E) 818'
- 105' VISIBLE SCRIBING "S" IN SINGLE BLAZE
- 12" ROTTED FIR STUMP S61°E 159' (REC. 1593)
- 14" D. FIR N83°E 193' HAS VISIBLE SCRIBING "T" IN SINGLE BLAZE
- 12" D. FIR S16°E 123' HAS VISIBLE SCRIBING "S25-BT" IN SINGLE BLAZE
- 14" D. FIR S43°W 485' HAS VISIBLE SCRIBING "S26-BT" IN SINGLE BLAZE
- 8" D. FIR N55°W (REC. N57W) 291' HAS VISIBLE SCRIBING "S23-BT" IN SINGLE BLAZE
- N-S, E-W FENCE CORNER S37°W 41'

#### N 1/4 CORNER TO SECS. 24 & 25, T21S, R5W

- 3/4" GALV. IRON PIPE 6" ABOVE GROUND
- 16" N. FIR N11°E 448' OF SCRIBING "N 1/4 S24-BT" IN SINGLE BLAZE
- 12" N. FIR S23°E 313' OF SCRIBING "N 1/4 S25-BT" IN SINGLE BLAZE

#### 1/4 CORNER TO SECS. 24 & 25, T21S, R5W

- 3/4" GALV. IRON PIPE 6" ABOVE GROUND
- 8" D. FIR N80°E 92' OF SCRIBING "1/4 S24-BT" IN SINGLE BLAZE
- 6" D. FIR S81°W 32' OF SCRIBING "1/4 S25-BT" IN SINGLE BLAZE

#### SECTION CORNER TO SECS. 24 & 25 T21S, R5W, SECS. N130 T21S, R4W

- 9" Dia. Sandstone 4" Above Ground w/ 4" Chisled "4" on top
- (10") New 12" D. FIR S71°E 82' w/ well healed single blaze
- (22") New 32" D. FIR N48°E 270' w/ well healed single blaze
- (8") New 15" D. FIR N86°W 68' w/ well healed single blaze
- (27") New 15" D. FIR S61°W 328' w/ well healed single blaze
- N-S FENCE WEST 12'

#### 1/4 CORNER TO SEC. 25, T21S, R5W & SEC. 30 T21S, R4W

- 1" GALV. IRON PIPE WITH BRASS CAP SET 12" ABOVE GROUND
- Marked "T21S R5W"
- 8 5 3 0 W
- 164

- FIR STUMP S37°W 54' OF OPENED FACE
- 36" FIR SNAG, 10" HIGH, S20°E 148' W/ OPENED, ROTTED FACE
- 10" D. FIR S70°W 63' w/ well healed single blaze
- 12" D. FIR S54°E 33' w/ well healed single blaze
- 14" FIR STUMP N 143' w/ bottom of healed blaze
- N-S FENCE WEST 22'

#### WIT. COR. TO SECS. 25 & 36 T21S, R5W, SECS. 30 & 31 T21S, R4W

- 205' NORTH OF CORNER (REN. #14) 1 1/2" IRON PIPE - 20" BELOW GROUND
- 14" ASH (DEAD) N55°E 70' - NO VISIBLE SCRIBING OR BLAZE
- (47") NEW 18" MAPLE S66°E 621' (REC. 653) OF SCRIBING "45" IN BLAZE
- (18") NEW 16" ALDER S6°W 658' OF SCRIBING VISIBLE IN ROTTED FACE

#### 1/4 CORNER TO SEC. 35 & 36, T21S, R5W

- 3/4" IRON PIPE 6" ABOVE GROUND
- 6" FIR STUMP S78°E 482' w/ well healed blaze
- (30") NEW 42" FIR STUMP N24°E 468' w/ well healed blaze
- (32") NEW 42" FIR S54°W 263' w/ well healed blaze

#### SECTION CORNER TO SECS. 26, 27, 34, 35, T21S, R5W

- 3/4" IRON PIPE, 8" ABOVE GROUND
- 4" X 4" X 18" ROTTED POST
- 36" FIR, UPRIGHT, ROTTED, APPROX. N23°E 158' w/ BLAZE AREA CUT OUT (OBT)
- (8") NEW 20" CEDAR (REDWOOD) STUMP S69°W 370' w/ BLAZE AREA CUT OUT (OBT)
- 15" MAPLE S73°E 118' w/ WELL HEALED BLAZE
- 27" MAPLE N34°W 332' (REC. 322), BLAZE AREA ROTTED OUT
- (6") NEW 18" D. FIR N81°E 43' w/ WELL HEALED BLAZE
- (13") NEW 18" I. CEDAR S51°W 233' w/ WELL HEALED BLAZE

#### N.E. CORNER D.L.C. #37

- CORNER IS A 40" D. FIR w/ WELL HEALED BLAZE IN A FENCE SOUTH & WEST

#### WITNESS CORNER TO N.E. COR. D.L.C. #37

- 1" GALV. IRON PIPE WITH BRASS CAP SET 6" ABOVE GROUND
- Marked "DOUGLAS COUNTY SURVEYOR"
- N.C.
- T21S R5W
- 10 FT. S
- 11 E
- 11 W
- D.L.C. COR
- 37
- 1979

- 18" D. FIR N31°E 85' FT DOUBLE BLAZED & SCRIBED
- 10" W. OAK N40°W 275' DOUBLE BLAZED & SCRIBED
- (25") NEW 30" OAK SNAG S44°E 943' w/ a well healed double blaze

#### S.E. CORNER D.L.C. #37

- 3" X 1/4" REINFORCED STEEL 1' ABOVE GROUND w/ 3/4" REBAR 1" OUT ON N. EDGE
- 3/4" REBAR ON SOUTH EDGE
- 34" CEDAR S75°E 271' w/ VISIBLE SCRIBING IN PARTLY HEALED DOUBLE BLAZE
- (7") NEW 8" HEMLOCK N27°W 163' w/ WELL HEALED DOUBLE BLAZE

### SET CORNERS

#### S 1/4 CORNER TO SEC. 25, T21S, R5W & SEC. 30, T21S, R4W

- 3/8" IRON ROD 6" ABOVE GROUND
- 8" D. FIR N34°E 193', DOUBLE BLAZED & SCRIBED "1/4 S30-BT"
- 8" D. FIR S18°W 273', DOUBLE BLAZED & SCRIBED "1/4 S25-BT"

#### S.E. 1/4 CORNER, SEC. 25, T21S, R5W

- 3/8" IRON ROD 6" ABOVE GROUND
- 8" D. FIR N13°W 193', DOUBLE BLAZED & SCRIBED "1/4 S25-BT"
- 6" D. FIR S70°W 156', DOUBLE BLAZED & SCRIBED "1/4 S25-BT"

#### 1/4 CORNER TO SECS. 25 & 26, T21S, R5W

- 1" GALV. IRON PIPE WITH BRASS CAP SET 6" ABOVE GROUND
- Marked "T21S R5W"
- 1/4 COE
- S26 S25
- 1979

- 12" D. FIR S88°W 493', DOUBLE BLAZED & SCRIBED "1/4 S26-BT"
- 10" D. FIR N39°E 53', DOUBLE BLAZED & SCRIBED "1/4 S25-BT"

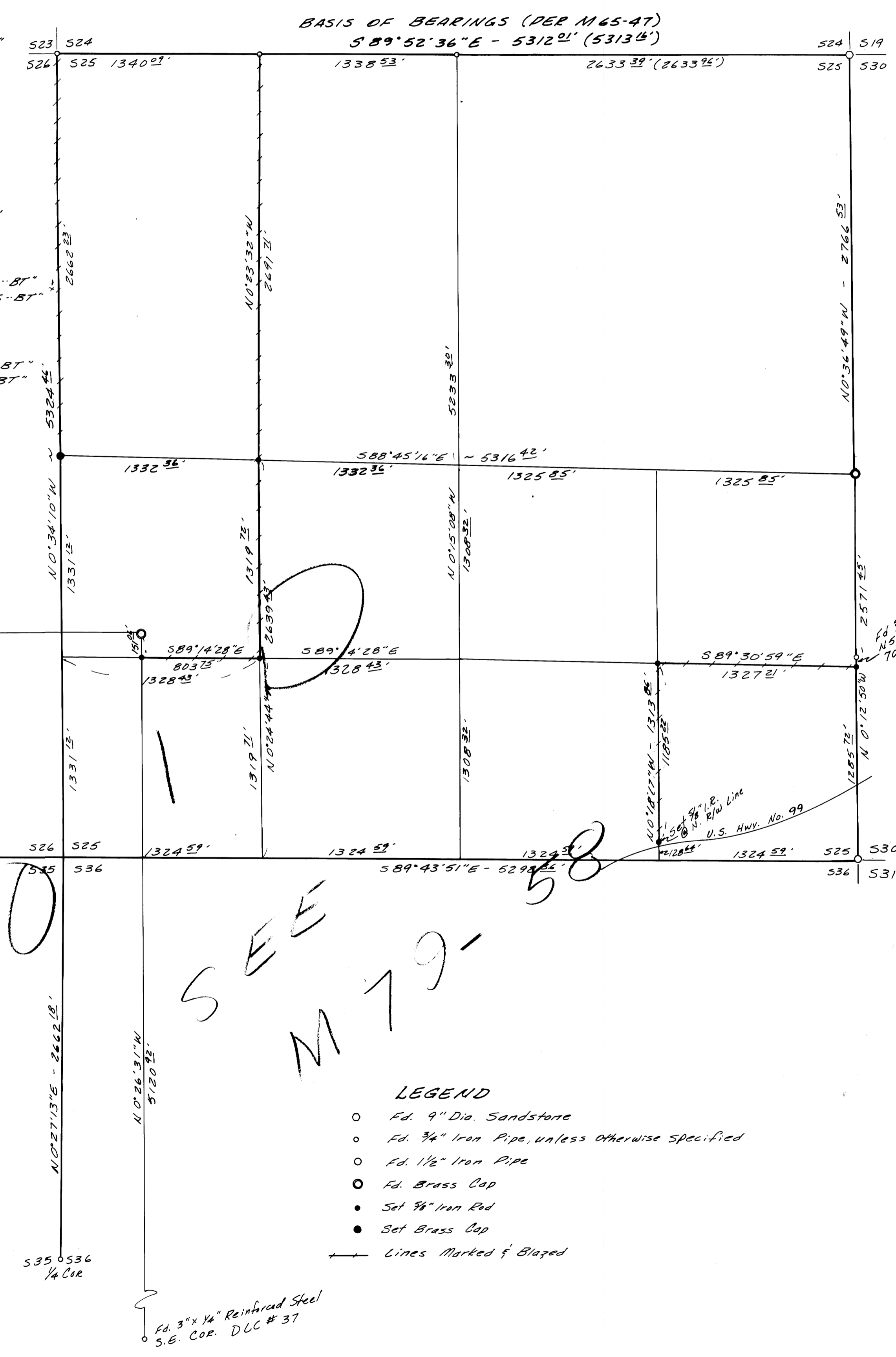
#### C.W. 1/4 CORNER, SEC. 25, T21S, R5W

- 3/8" IRON ROD 6" ABOVE GROUND
- 10" D. FIR N59°E 213', DOUBLE BLAZED & SCRIBED "C.W. 1/4 S25-BT"
- 12" D. FIR N65°W 118', DOUBLE BLAZED & SCRIBED "C.W. 1/4 S25-BT"

#### S.W. 1/4 CORNER, SEC. 25, T21S, R5W

- 3/8" IRON ROD 6" ABOVE GROUND
- 10" CEDAR S20°E 295', DOUBLE BLAZED & SCRIBED "1/4 S25-BT"
- 14" D. FIR N36°E 125', DOUBLE BLAZED & SCRIBED "1/4 S25-BT"

CORRECTIONS MADE JAN. 2, 1980  
M. O. WEIMBURGER



BASIS OF BEARINGS (PER M45-47)  
S 89° 52' 36" E - 5312.01' (5313.4')

SEE  
M 79

REVISED

- LEGEND
- 4" Dia. Sandstone
  - 3/4" Iron Pipe, unless otherwise specified
  - 1/2" Iron Pipe
  - Brass Cap
  - Set 3/8" Iron Rod
  - Set Brass Cap
  - Lines Marked & Blazed

ALPHA & OMEGA ENGINEERS INC.  
1622 N.E. VINE STREET  
ROSEBURG, OR. 97470  
672-7151

RUSSELL T. PINARD  
SURVEYOR

COUNTY SURVEYORS FILE DATA  
DO NOT REMOVE FROM OFFICE