

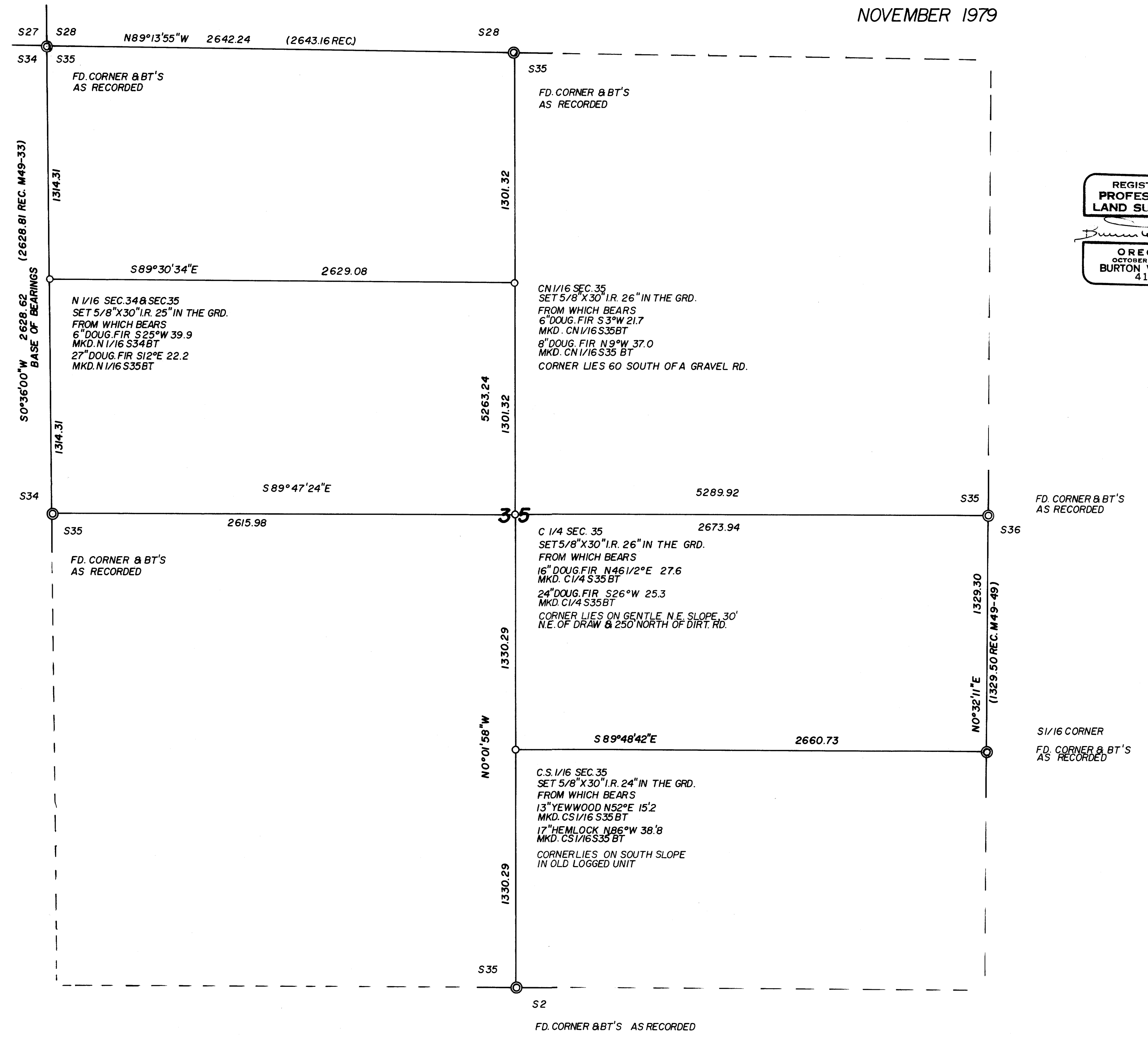
COUNTY SURVEYORS FILE DATA
DO NOT REMOVE FROM OFFICE

FILED ϕ AS
RECEIVED
DEC 10 1979
COUNTY SURVEYOR
DOUGLAS COUNTY, ORE.
 ϕ

SURVEY TO SET INTERIOR CORNERS SITUATED IN SEC. 35, T.26S. R.8W., W.M.

FOR - SUN STUDS INC.
BY - BURTON W. HOLT P.O. BOX 1127 ROSEBURG, ORE.

NOVEMBER 1979 SCALE 1" = 400'



REGISTERED
PROFESSIONAL
LAND SURVEYOR
Burton W. Holt
OREGON
OCTOBER 4, 1957
BURTON W. HOLT
418

COUNTY SURVEYORS FILE DATA
DO NOT REMOVE FROM OFFICE

| | | | |
|-------------|----------------|----------|--|
| SCALE | | DRAWN BY | |
| REVISED | | DATE | |
| APPROVED BY | DRAWING NUMBER | | |