

COUNTY SURVEYORS FILE DATA  
DO NOT REMOVE FROM OFFICE

# SURVEY FOR DICK HODGES

Sections 29 & 32, T22S, R7W, W.M.

By: BHW Engineering & Surveying

October 1979

Scale: 1" = 200'

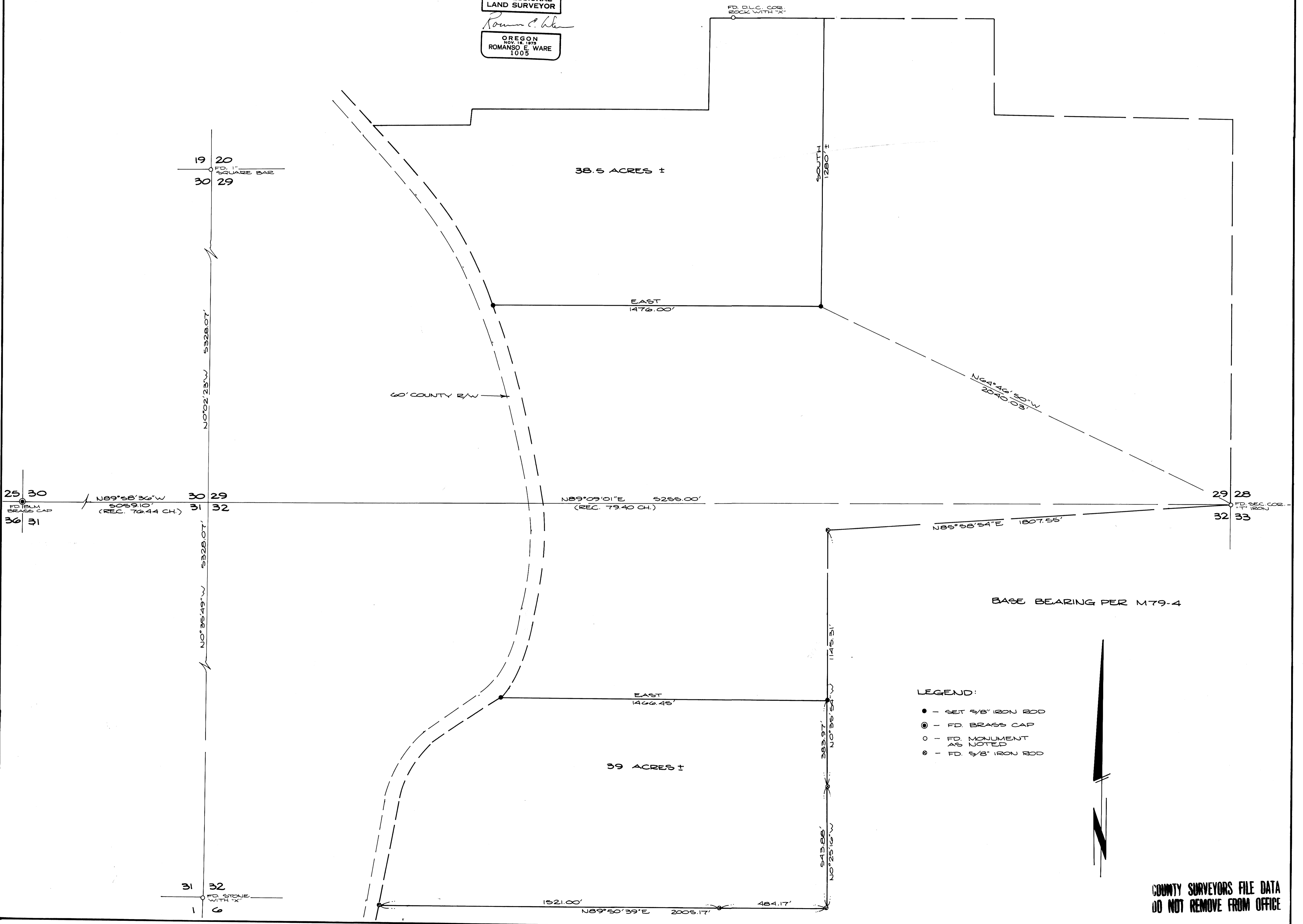
FILE #  $\phi$   
RECEIVED  $\phi$   
NOV 2 1979  
COUNTY SURVEYOR  
DOUGLAS COUNTY, ORE.

REGISTERED  
PROFESSIONAL  
LAND SURVEYOR

*Roman C. Ware*

OREGON  
NOV. 16, 1973  
ROMANSO E. WARE  
1005

FD. D.L.C. COR.  
ROCK WITH "X"



LEGEND:

- - SET 5/8" IRON ROD
- ⊙ - FD. BRASS CAP
- - FD. MONUMENT AS NOTED
- ⊗ - FD. 5/8" IRON ROD



COUNTY SURVEYORS FILE DATA  
DO NOT REMOVE FROM OFFICE

MAP FILE