

FILED
RECEIVED

JUL 13 1979

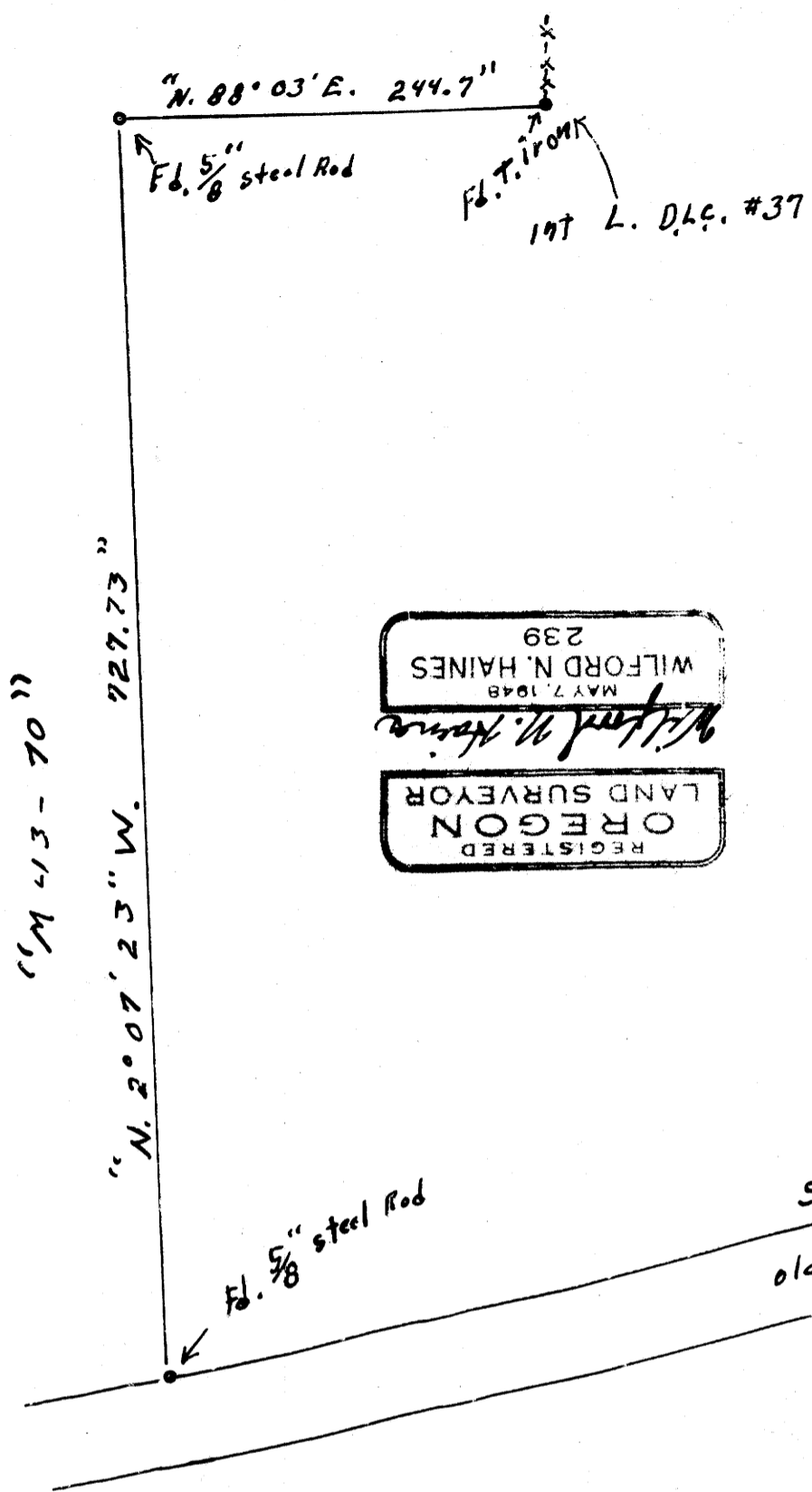
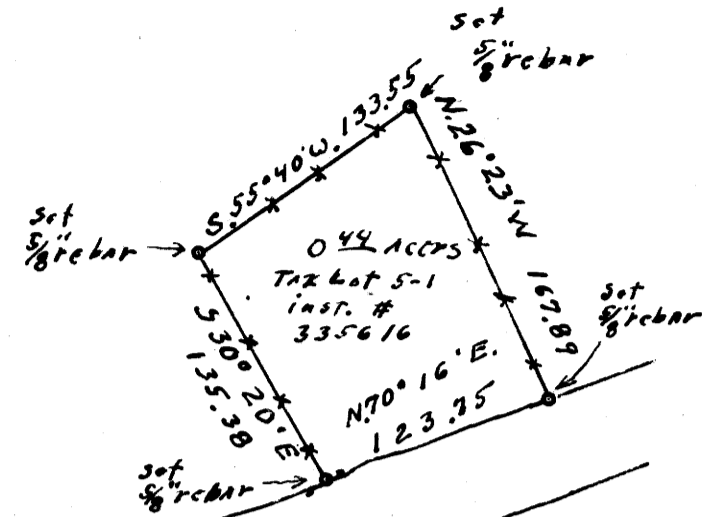
COUNTY SURVEYOR
DOUGLAS COUNTY, OREGON

MAP FILE M 28-2

1" = 100'

June 1979

North
CC Based on N. 2° 07' 23" W. 727.73"
MAP BY M 43-70
GREEN EMPIRE INC. 1971



REGISTERED
OREGON
LAND SURVEYOR
WILFORD N. HAINES
MAY 7, 1948
239

1320.98

S. 72° 15' W.
old U.S. 99

SEC. 35, T. 21 S., R. 5 W. W.M.

Elijah T ESTES D.L.C. # 37

For

Joe G. SELVA

Drain, Oreg.

COUNTY SURVEYORS FILE DATA
DO NOT REMOVE FROM OFFICE

MAP FILE M 28-2