

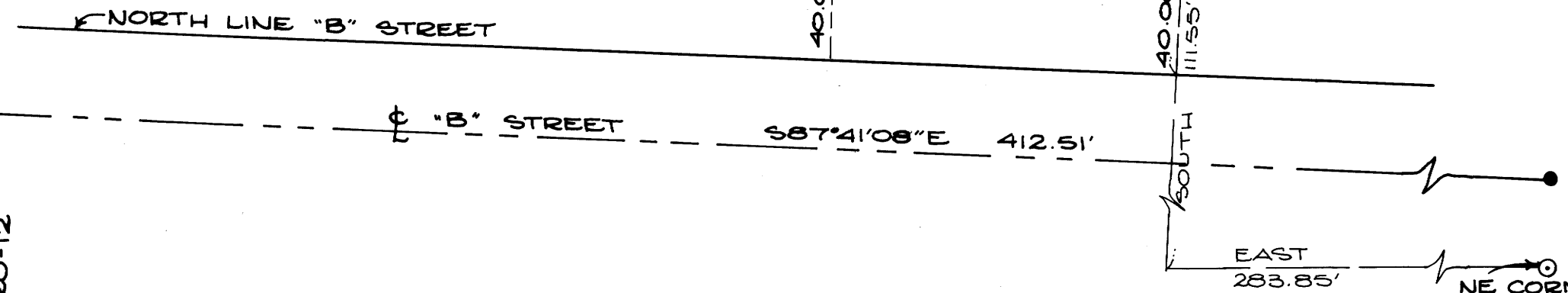
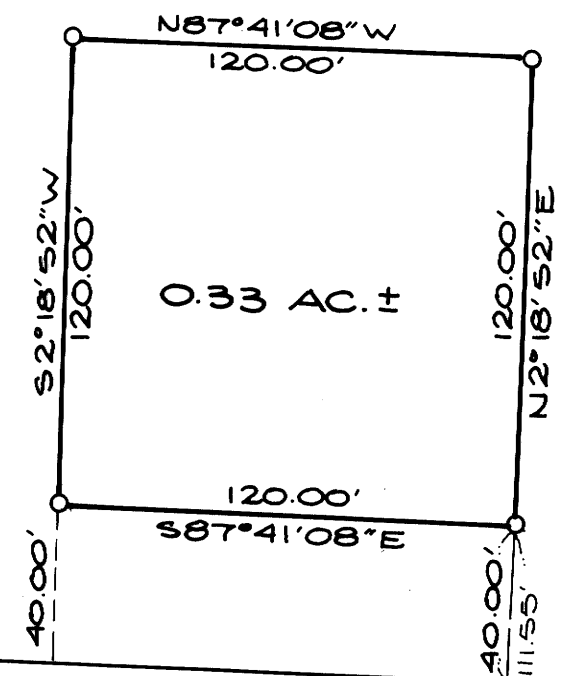
SURVEY FOR CITY OF DRAIN

SECTION 17, T22S, R5W, W.M.

BY: BHW ENGINEERING & SURVEYING

SCALE: 1" = 50'
JULY 1979

FILED ✓
RECEIVED ✓
AUG 29 1979
COUNTY SURVEYOR
DOUGLAS COUNTY, ORE.
✓



NE CORNER
LOT 1, BLOCK 6
PLAT OF EAST DRAIN
RECORDED IN VOL. 2,
PAGE 1.

LEGEND

- - SET 5/8" IRON ROD
- - FOUND NAIL PER M20-12

REGISTERED
PROFESSIONAL
LAND SURVEYOR

Ronald A. Quimby
OREGON
JULY 16, 1973
RONALD A. QUIMBY
1654

COUNTY SURVEYORS FILE DATA
DO NOT REMOVE FROM OFFICE

MAP FILE M78-59

MAP FILE M78-59