

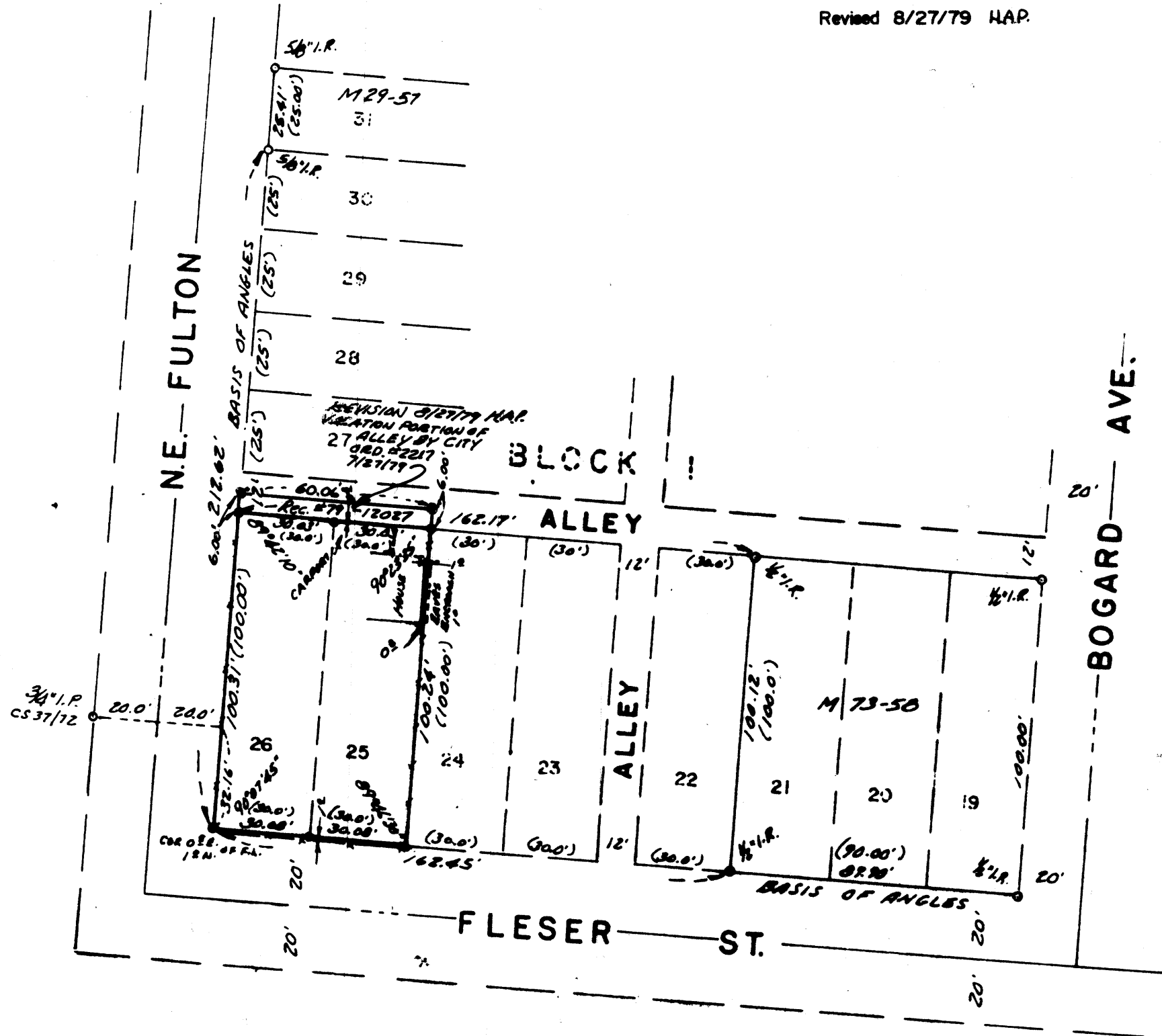
COUNTY SURVEYORS FILE DATA
DO NOT REMOVE FROM OFFICE SURVEY FOR PROPERTY CORNERS

IN SECTION 19, T.27S. R.5W. W.M. — LOTS 25 & 26 BLOCK 1
BOGARD ADDITION TO CITY OF ROSEBURG

FOR: PRICE
BY: HERMAN A. PIESKE

JUNE 1979 --- SCALE: 1" = 40'
Revised 8/27/79 H.A.P.

FILED *JHH*
RECEIVED *JHH*
AUG 28 1979
COUNTY SURVEYOR
DOUGLAS COUNTY, OREGON



REGISTERED
PROFESSIONAL
LAND SURVEYOR

Herman A. Pieske
OREGON
JULY 14, 1978
HERMAN A. PIESKE
1651

- — Set 5/8" Iron rod
- — Point found, as noted hereon

MAP FILE M78-56

MAP FILE M78-56