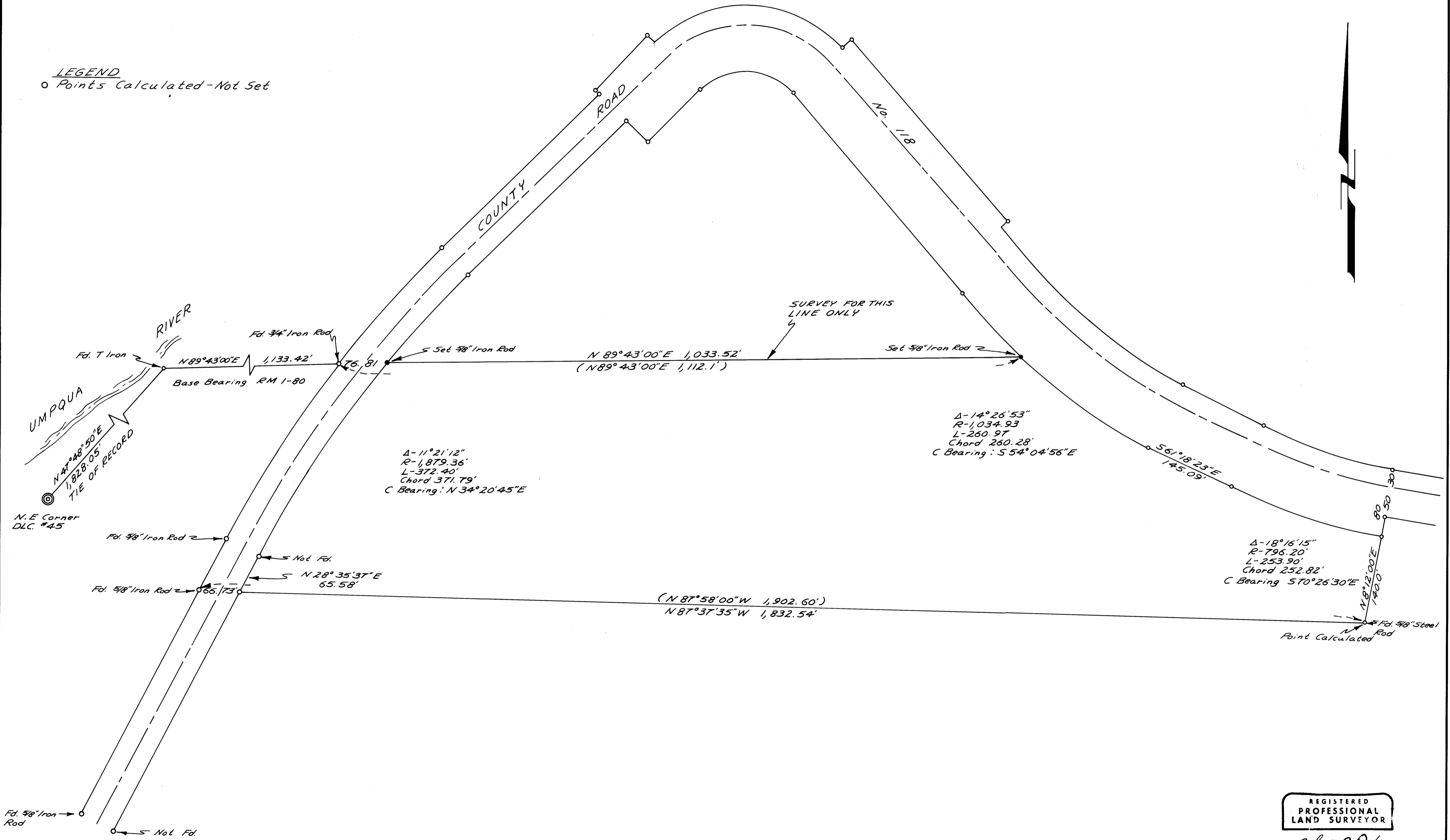


**PROPERTY SURVEY IN DLC. No. 44**  
**SECTION 21, T22S, R8W, W.M. DOUGLAS COUNTY, OREGON**  
**FOR: EVA LETSOM**  
**BY: ROBERT L. DOLAN**  
**SCALE 1" = 100'**  
**AUGUST 1979**

COUNTY SURVEYORS FILE DATA  
 DO NOT REMOVE FROM OFFICE

FILED  
 RECEIVED  
 AUG 28 1979  
 COUNTY SURVEYOR  
 DOUGLAS COUNTY, ORE.

LEGEND  
 o Points Calculated - Not Set



REGISTERED  
 PROFESSIONAL  
 LAND SURVEYOR  
 Robert L. Dolan  
 OREGON  
 JULY 30, 1976  
 ROBERT L. DOLAN  
 '076