

COUNTY SURVEYORS FILE DATA  
DO NOT REMOVE FROM OFFICE

M 78-54

SECT. 19, T. 22 S., R. 7 W. W. M.

Plat of Town of Elkton

For

Arlene's Cafe

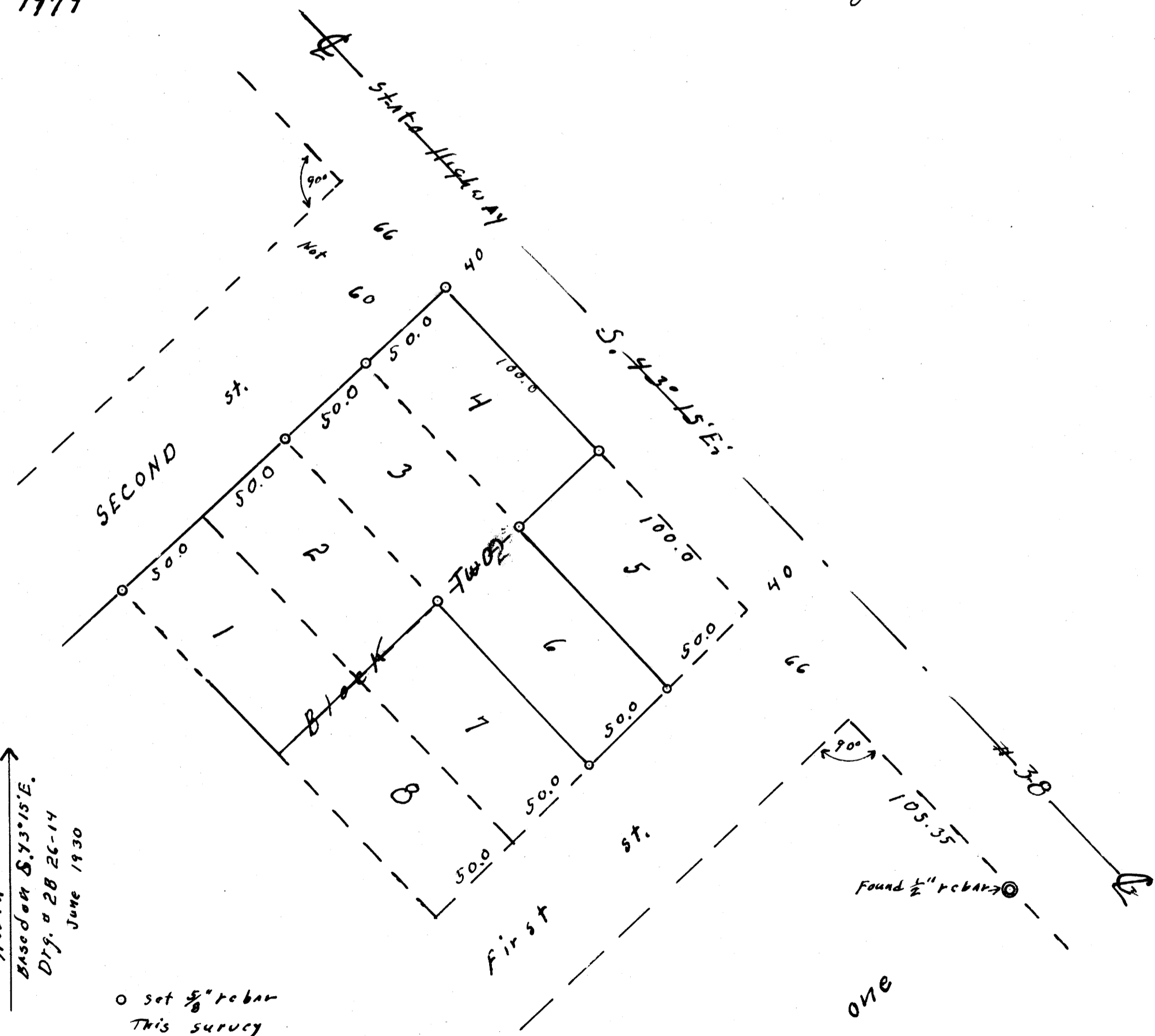
Elkton, Ore.

Aug. 14, 1979

FILED ✓  
RECEIVED ✓

AUG 27 1979

COUNTY SURVEYOR  
LOGAN COUNTY, ORE.



REGISTERED  
OREGON  
LAND SURVEYOR  
*Wilford N. Haines*  
MAY 7, 1948  
WILFORD N. HAINES  
239

North ↑  
Based on S. 73° 15' E.  
Dtg. a 28 26-14  
June 1930

○ set 5/8" rebar  
This survey

BLOCK ONE