

**SURVEY TO SET MONUMENTS IN BLOCK 17,
BROWN'S ADDITION, CITY OF OAKLAND,
SECTION 4, T25S, R5W, W.M. COUNTY SURVEYORS FILE DATA
for: Russell Cline**

Scale: 1"=50'
August 1979

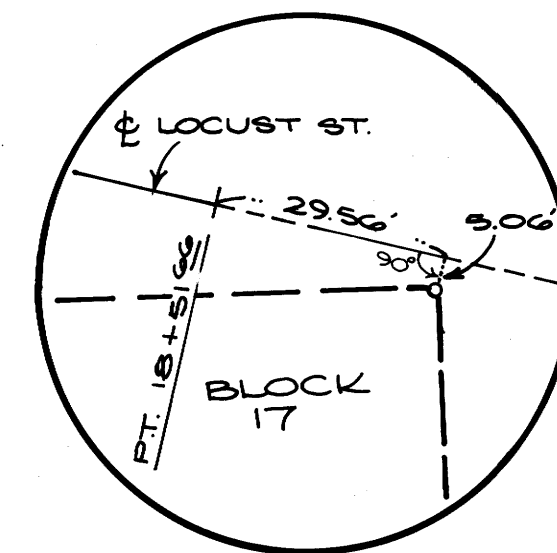
REGISTERED
PROFESSIONAL
LAND SURVEYOR

Romanso E. Ware
OREGON
NOV. 16, 1973
ROMANSO E. WARE
1005

**BHW
Engineering & Surveying**

**COUNTY SURVEYORS FILE DATA
DO NOT REMOVE FROM OFFICE**

BASE BEARING PER RM 2-59



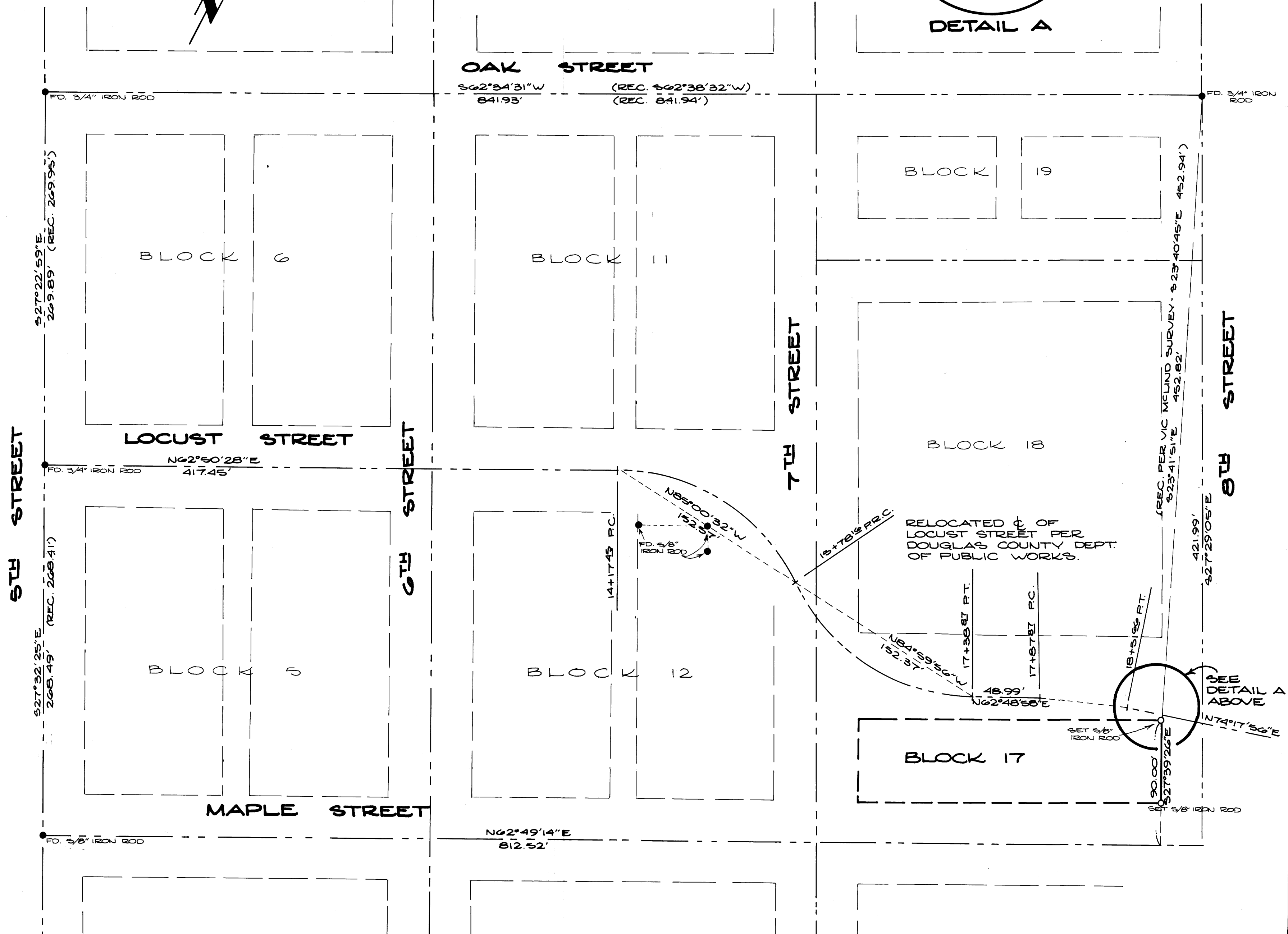
DETAIL A

- LEGEND**
- - FD. MONUMENT AS NOTED
 - - SET 3/8" IRON ROD

FILED
RECEIVED JHM

AUG 21 1979

COUNTY SURVEYOR
DOUGLAS COUNTY, ORE.



MAP FILE M-78-47

MAP FILE M-78-47