

COUNTY SURVEYORS FILE DATA
DO NOT REMOVE FROM OFFICE

FILED
RECEIVED JHH

AUG 7 1979

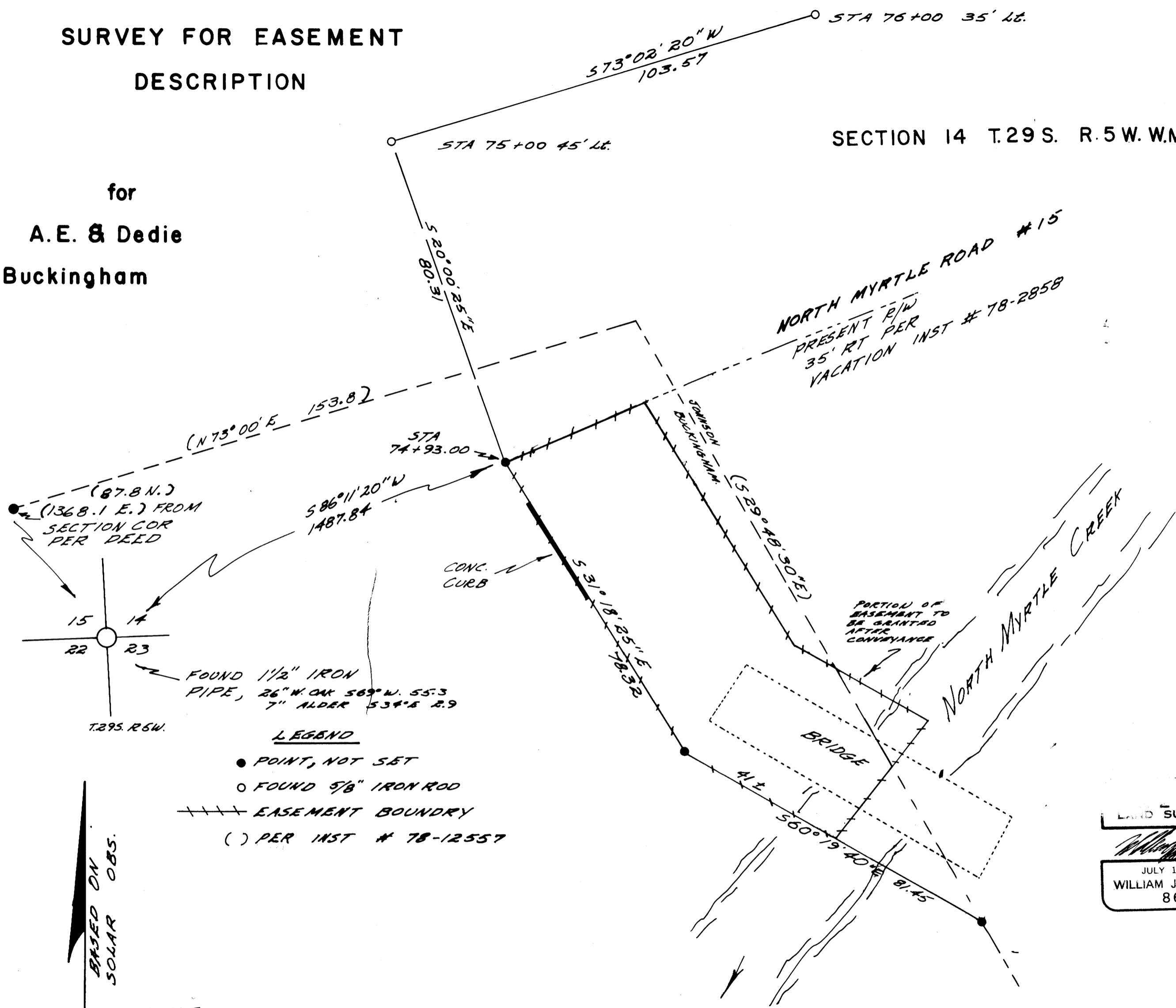
COUNTY SURVEYOR
DOUGLAS COUNTY, ORE.

MAP FILE M.78-31

**SURVEY FOR EASEMENT
DESCRIPTION**

SECTION 14 T.29 S. R.5 W. W.M.

for
**A.E. & Dedie
Buckingham**



LAND SURVEYOR

JULY 12, 1968
WILLIAM J. RUPPERT
866

Umpqua Surveying Company

MAP FILE M.78-31