

SUBDIVISION OF SECTION 6 T30S R4W WM
SURVEYED FOR LONGVIEW FIBER CO. BY BAUGHMAN TECHNICAL SERVICES
JULY 1979 SCALE 1"=400'

Bearings based on solar observation, June 25, 1979.

COUNTY SURVEYORS FILE DATA
DO NOT REMOVE FROM OFFICE

FILED
RECEIVED

AUG 7 1978

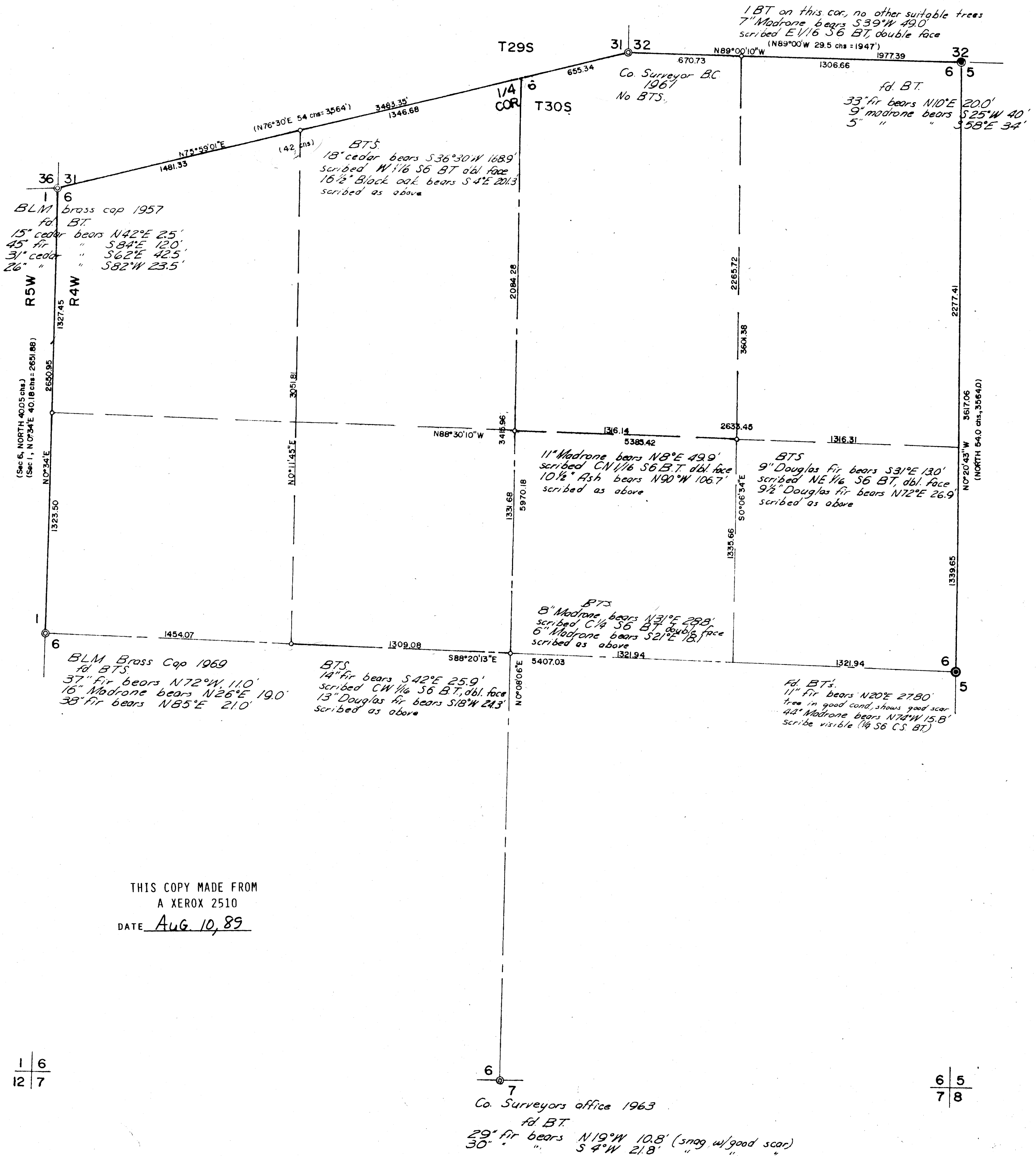
COUNTY SURVEYOR
DOUGLAS COUNTY, ORE.

Legend

- ⊙ fd. brass cap
- set 5/8" iron rod
- ⊙ set brass cap
- () record data
- ⊙ fd 3/4" iron pipe
- ⊙ fd. 1" I.P. with coupling

REGISTERED
PROFESSIONAL
LAND SURVEYOR

6.00 4.00



THIS COPY MADE FROM
A XEROX 2510
DATE Aug 10, 89

1 | 6
12 | 7

6 | 5
7 | 8
Co. Surveyors office 1963
fd. BT.
29" fir bears N19°W 10.8' (snag w/good scar)
30" " " S 4°W 21.8' " " "