

Survey In Section 34, T26S, R6W, W.M.

Surveyed For Roseburg Country Club
By Roseburg Lumber Company

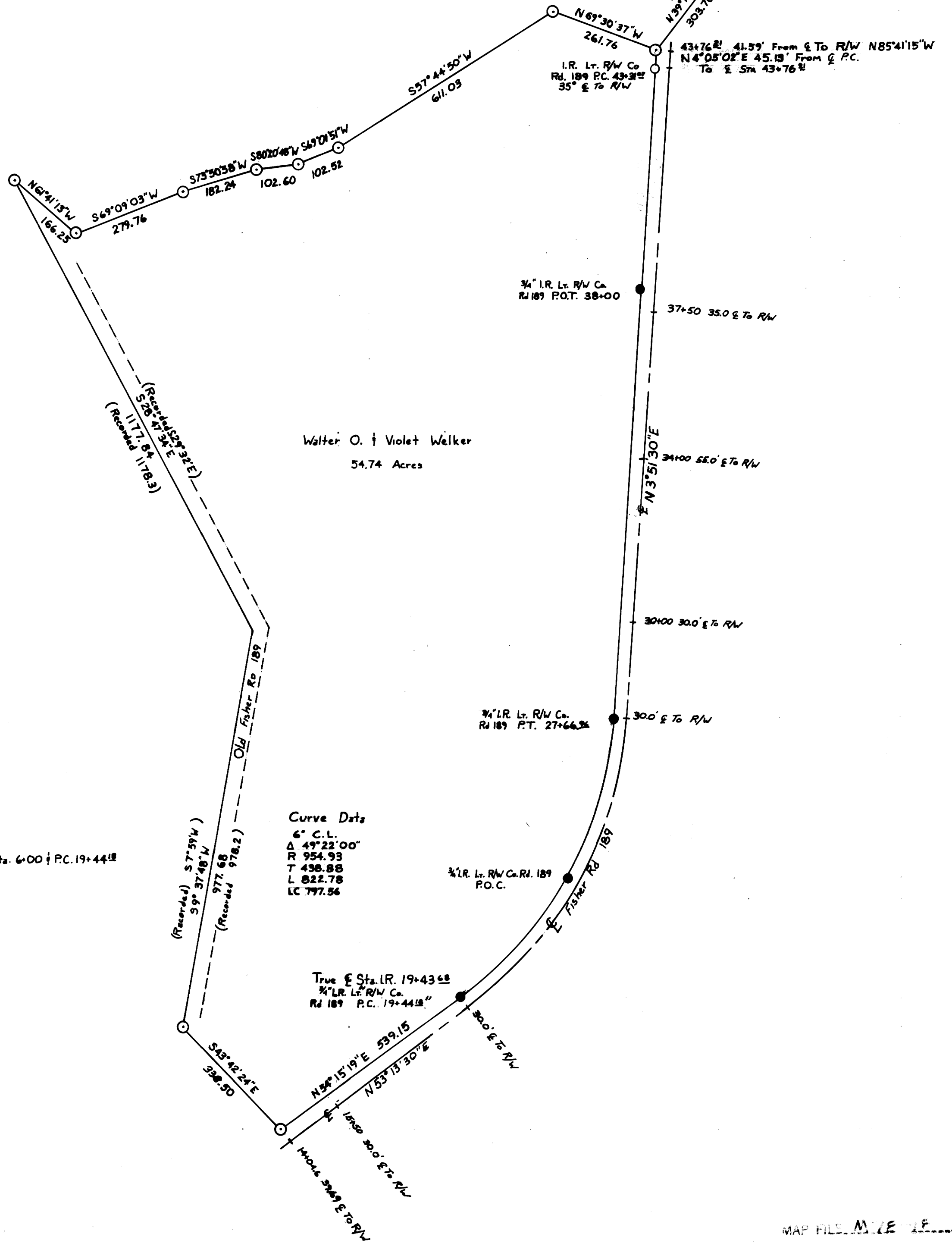
July 25, 1979

Scale 1"=200'

1/4 Corner In Rd. R/W -
Did Not Find

Witness To 1/4 Corner
County I.P.B.C. 1965

Curve Data
I° C.R.
Δ 8°56'00"
R 5729.58
T 447.57
L 893.33



Roseburg
Country Club

Walter O. & Violet Welker
54.74 Acres

REGISTERED
PROFESSIONAL
LAND SURVEYOR

Howard W. Johnstone

OREGON
MAY 13, 1960
HOWARD W. JOHNSTONE
498



Basis Of Bearings: Fisher Rd (County Rd 189) Between Sta. 6+00 & P.C. 19+44.12

- ◆ 1/4 Corner
- ⊗ Witness Corner
- ⊙ 5/8" Iron Rod Set
- 3/4" Iron Rod Found
- 3/4" Iron Rod Not Found