

**SURVEY TO ESTABLISH PROPERTY CORNERS
IN SEC. 23 T30S R2W W.M.
SURVEYED FOR CLAIR HENRY BY BAUGHMAN TECHNICAL SERVICE
JULY 1979 SCALE 1"=60'**

Bearings based on west line of C.S. file 55/72, North.

- LEGEND**
- set 1/2" iron rod
 - fd. 5/8" iron rod
 - ⊙ fd. brass cap,

**REGISTERED
PROFESSIONAL
LAND SURVEYOR**

Glenn S. Baughman

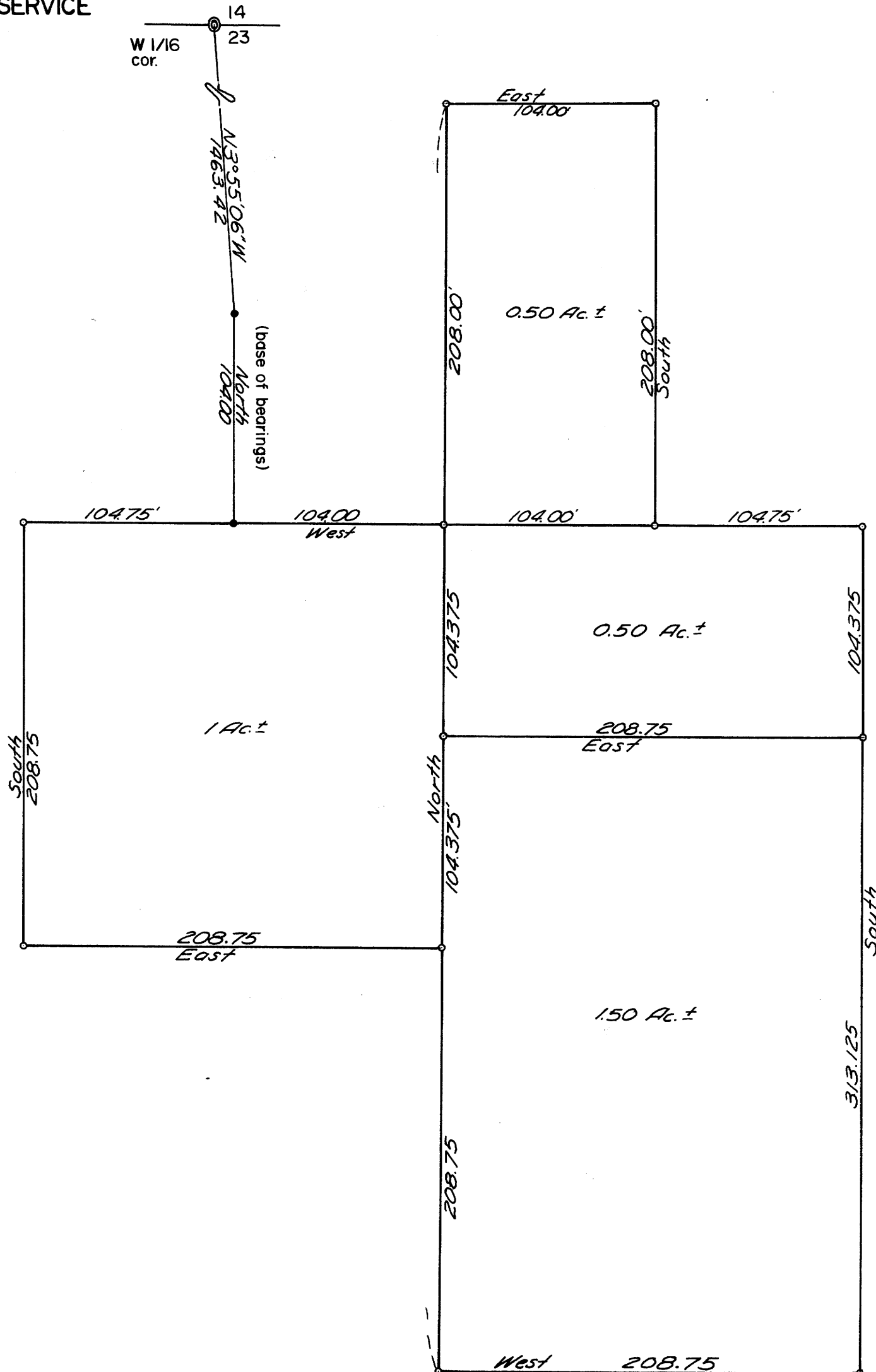
OREGON
JULY 14, 1961
GLENN S. BAUGHMAN
536

FILED ✓
RECEIVED ✓

JUL 26 1979

COUNTY SURVEYOR
DOUGLAS COUNTY, ORE.

JB



MAP FILE M 28 - 17

MAP FILE M 28 - 17

**COUNTY SURVEYORS FILE DATA
DO NOT REMOVE FROM OFFICE**