

# SURVEY FOR CAROL KUNDE

SECTION 17, T27S, R4W, W.M.

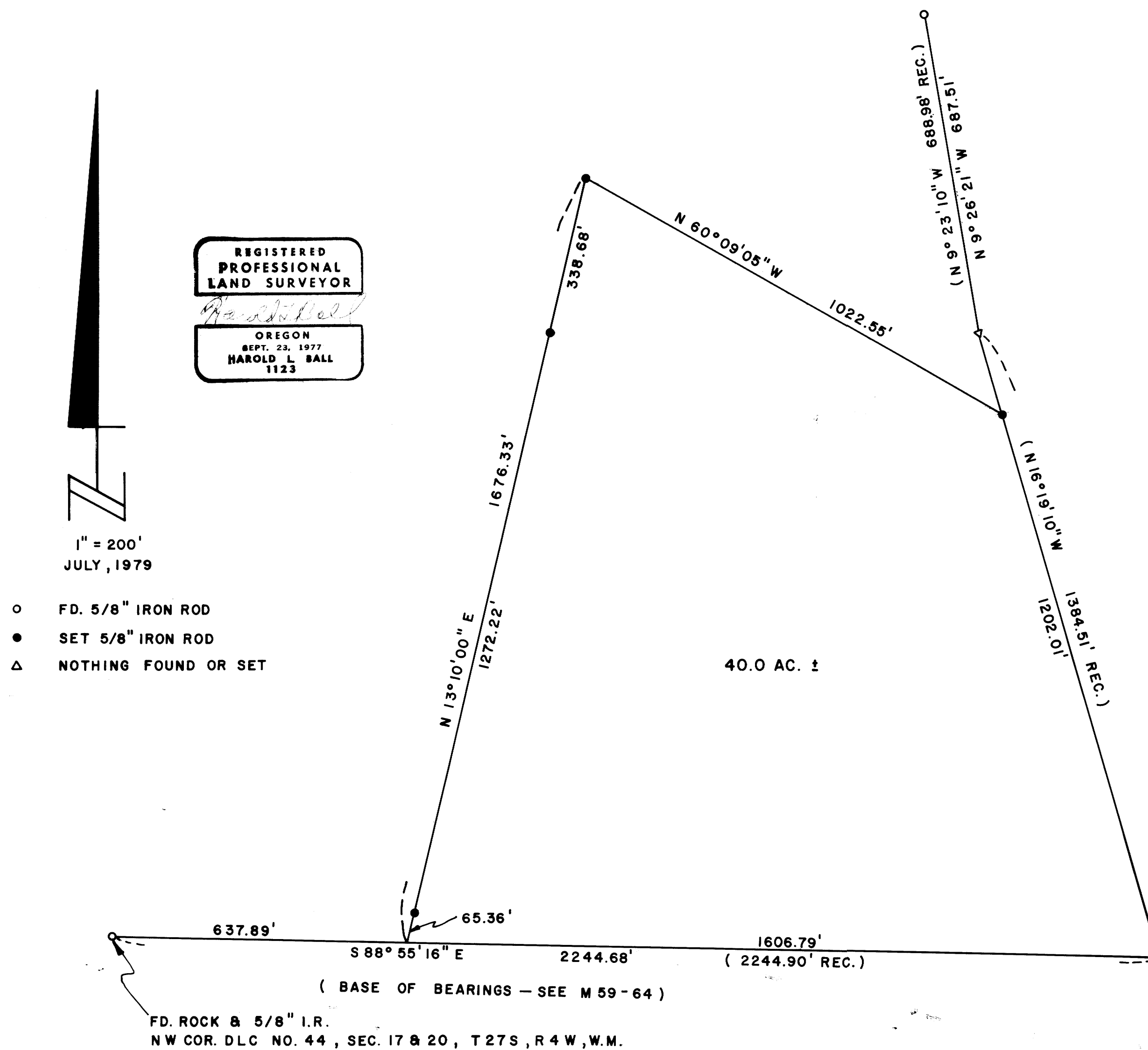
BY HAROLD L. BALL - SURVEYOR

FILED   
RECEIVED *JB*

JUL 25 1979

COUNTY SURVEYOR  
DEWEE COUNTY, ORE

*JB*



M 78-16

MAP FILE M 78-16