

SURVEY FOR DEED DESCRIPTION

COUNTY SURVEYORS FILE DATA
DO NOT REMOVE FROM OFFICE

FILED ✓
RECEIVED *JK*
JUL 24 1979
COUNTY SURVEYOR
DOUGLAS COUNTY, ORE.
36

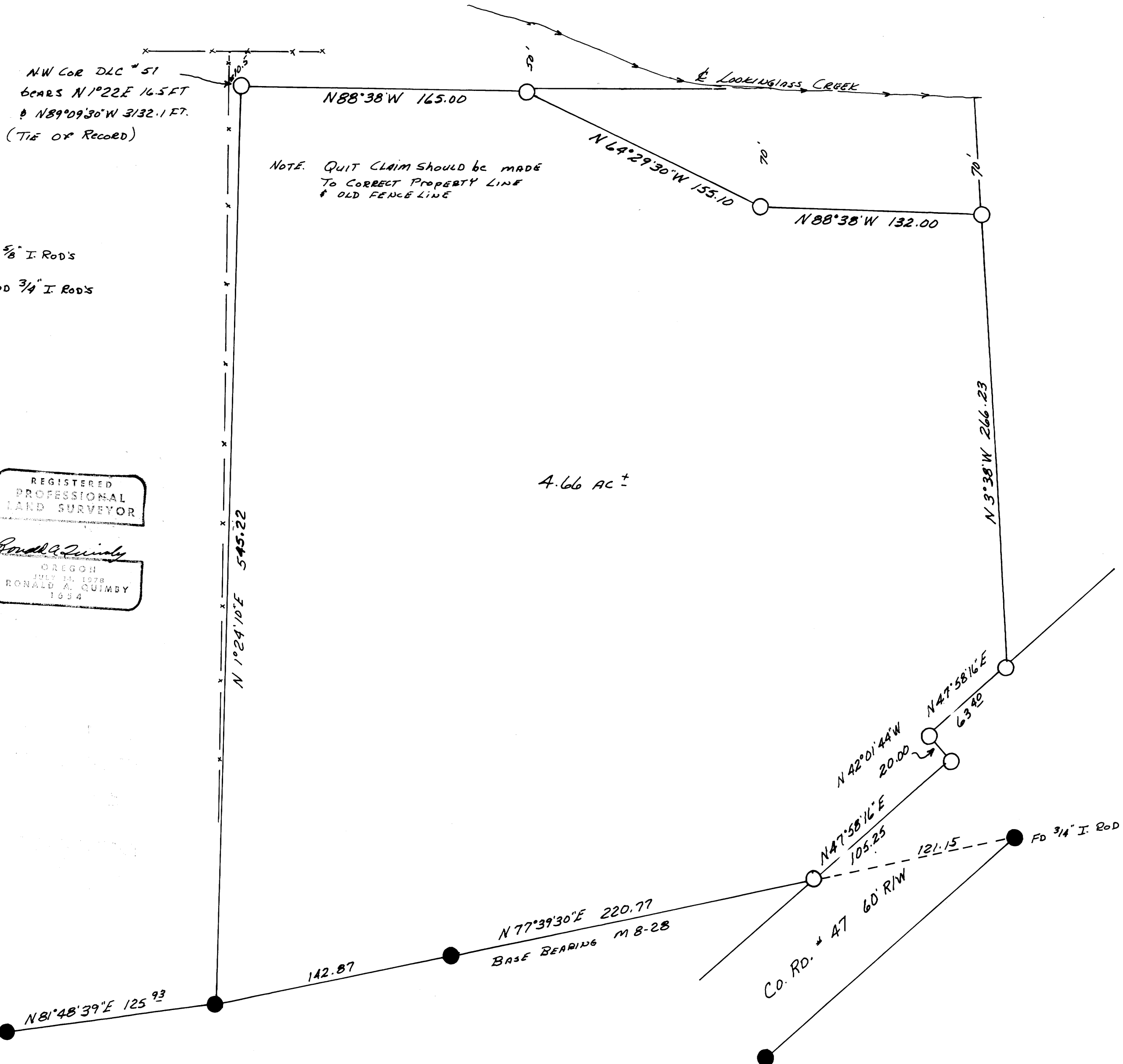
SURVEYED FOR: CHARLIE W. WALKER

SURVEYED BY: RONALD QUIMBY

S 20 T 28 S R 6 W

JULY 1979

SCALE 1" = 50'



REGISTERED
PROFESSIONAL
LAND SURVEYOR
Ronald A. Quimby
OREGON
JULY 21, 1978
RONALD A. QUIMBY
1994

