

PROPERTY RECORDS FILE DATA
DO NOT REMOVE FROM OFFICE

LAND PARTITION

for JACK PICKETT

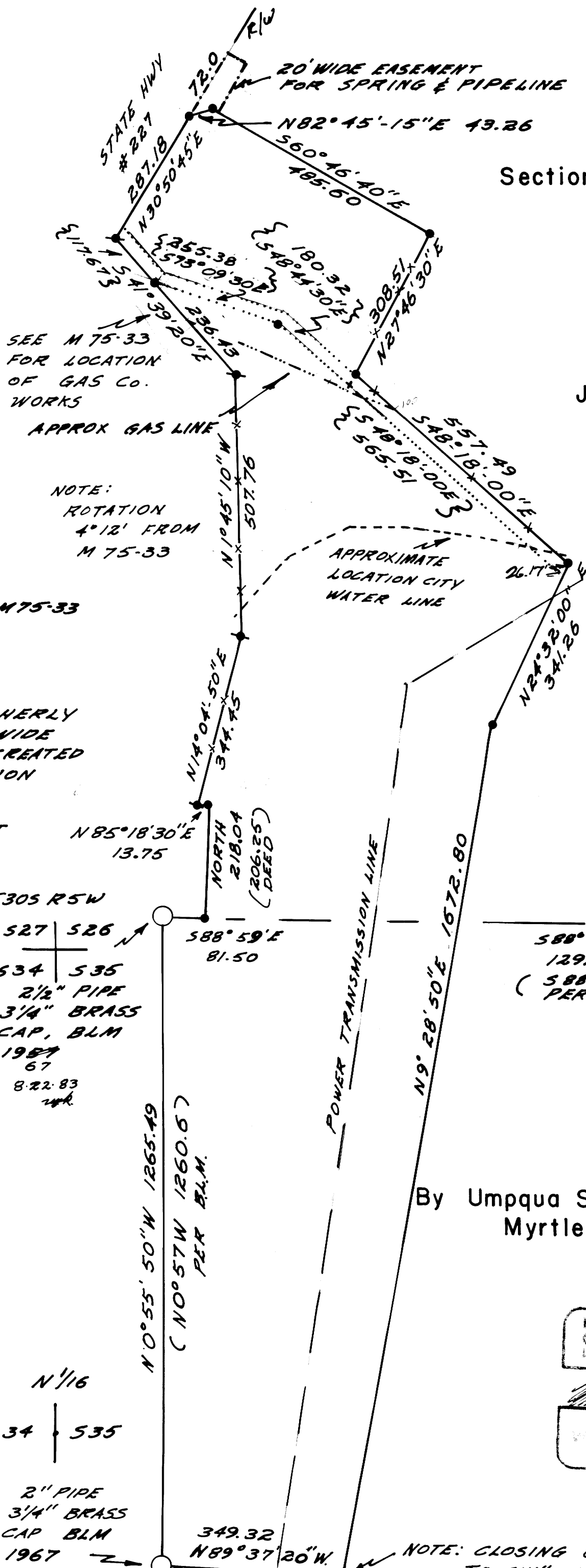
FILED 7
RECEIVED *BS*

JUL 18 1979

COUNTY SURVEYOR
DOUGLAS COUNTY, ORE.
DK

Sections 26 & 35
T.30S. R.5W. W.M.

July 1979



Legend

- FOUND BRASS CAP
- 1/2" IRON ROD PER M75-33
- SET 1/2" IRON ROD
- () RECORD CALLS
- { } WESTERLY & SOUTHERLY LINE OF 25 FE. WIDE ACCESS EASEMENT CREATED WITH THIS PARTITION
- BOUNDARY LINE OF 25' WIDE EASEMENT

NOTE:
ROTATION
4°12' FROM
M 75-33

T30S R5W

527 | 526
534 | 535
2 1/2" PIPE
3 1/4" BRASS
CAP, BLM
1987
67
8-22-83
wh

588°59'20"E
1292.23
(588°58'E 1292.28)
PER BLM
W 1/16 525
535
BLM.
2" PIPE
3 1/4" BRASS CAP

BASED ON SOLAR OBS.

N
SCALE
1" = 200'

N 1/16
534 | 535
2" PIPE
3 1/4" BRASS
CAP BLM
1967

By Umpqua Surveying Company
Myrtle Creek, Or.

REGISTERED
OREGON
LAND SURVEYOR

WILLIAM J. ROBERTS
266

NOTE: CLOSING CORNER
TO SW 1/4 NW 1/4
LINE IS APPROXIMATELY 8.7 FE. S.
PER SECTION BOUNDARY BY BLM.