

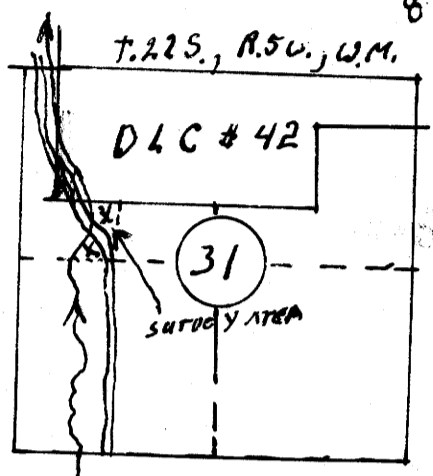
S.W. Corner
DLC # 42
N. 88° 37' E
Record EAST

County Road post pins
Found

1" inch = 100' : scale

June 14, 1979

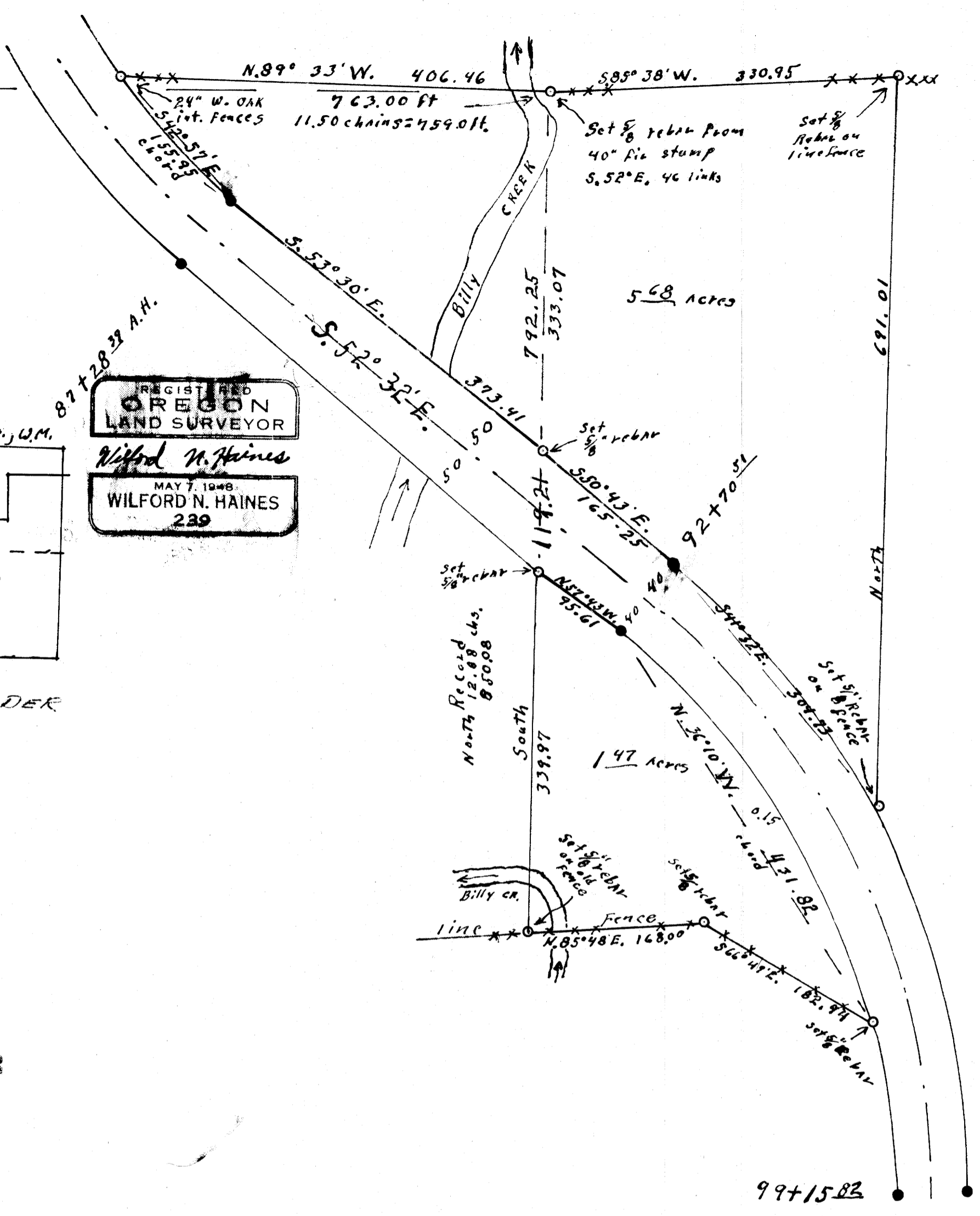
North
Based on County
Road Survey
24



REGISTERED
OREGON
LAND SURVEYOR
Wilford N. Haines
MAY 7, 1948
WILFORD N. HAINES
239

FOR: DAVID WILDER

FILED ✓
RECEIVED JRL
JUL 3 1979
COUNTY SURVEYOR
DOUGLAS COUNTY, ORE.
JL



COUNTY SURVEYORS FILE DATA
DO NOT REMOVE FROM OFFICE