

**SURVEY IN SECTION 29, T. 28 S., R. 6 W., W. M.**  
**SURVEYED FOR JUANITA WOODALL**  
**SURVEYED BY R. H. GEE - JUNE, 1979**  
**SCALE 1" = 40'**

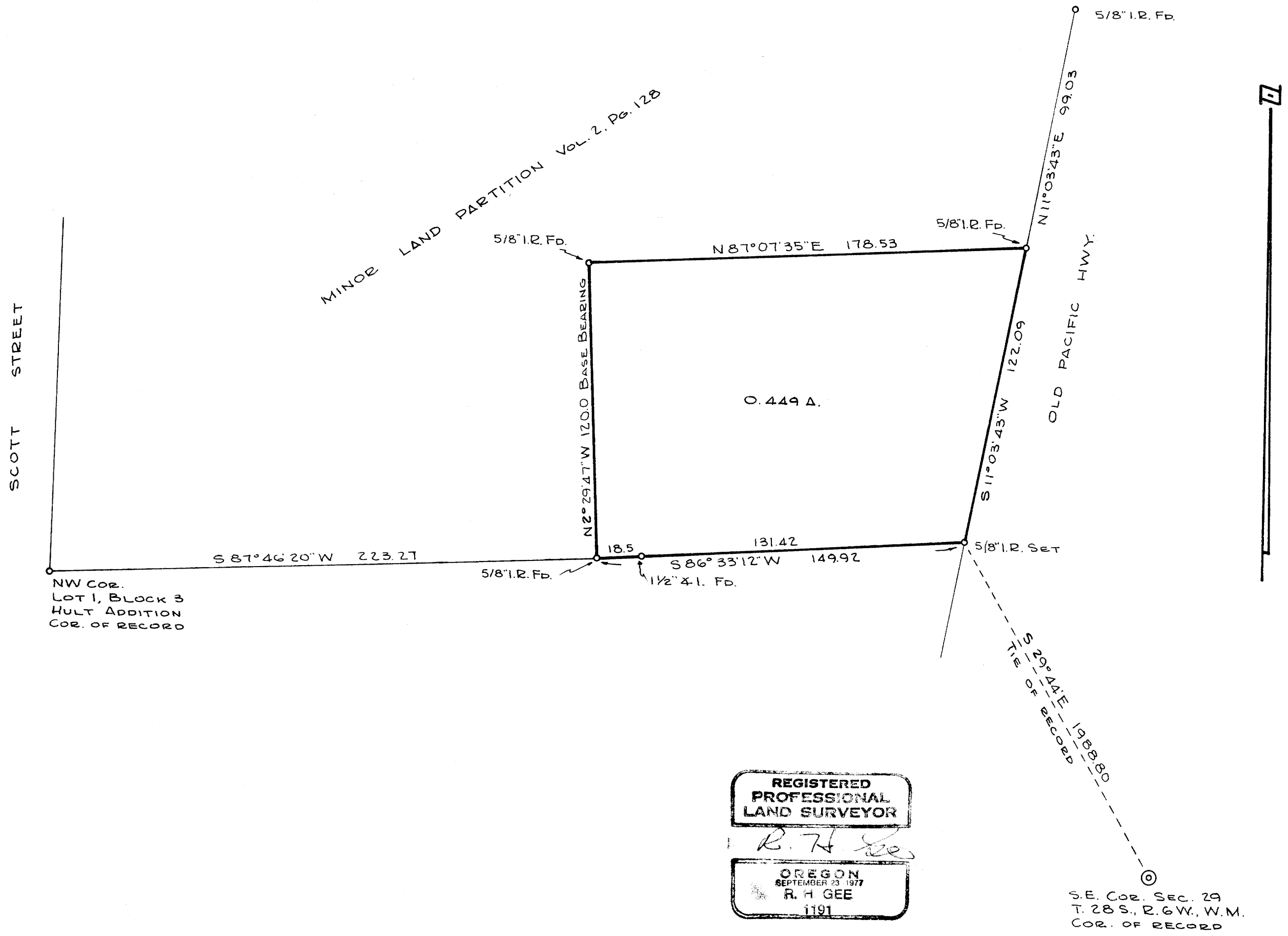
FILED  
RECEIVED

JUN 27 1979

COUNTY SURVEYOR  
DOUGLAS COUNTY, ORE.

JHG

MAP FILE M77-74



MAP FILE M77-74