

# SURVEY TO SET LOT CORNERS

Lots 1, 2 & 3, Block 11, Town of Riddle.  
Sec. 24, T. 30 S., R. 6 W., W. M.

for John Shirtcliff

FILED  
RECEIVED JUN

JUN 14 1979

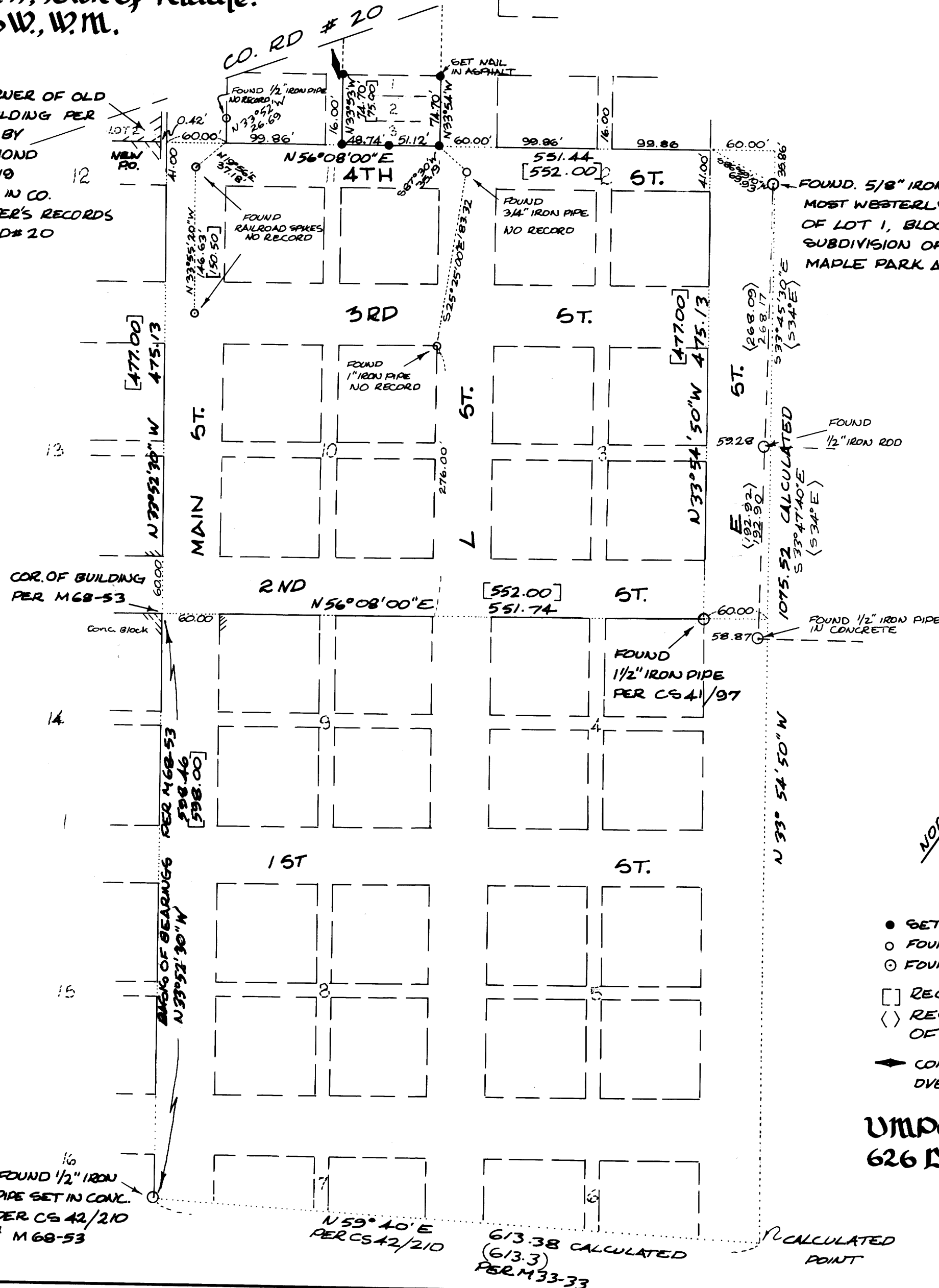
COUNTY SURVEYOR  
DOUGLAS COUNTY, ORE.

TB

CORNER OF OLD  
BRICK BUILDING PER  
A SURVEY BY  
M. B. GERMOND  
IN FEB. 1919  
MAP FILED IN CO.  
ROADMASTER'S RECORDS  
DRAWER RD# 20

REC. 58-53  
O.P.E.C. 22

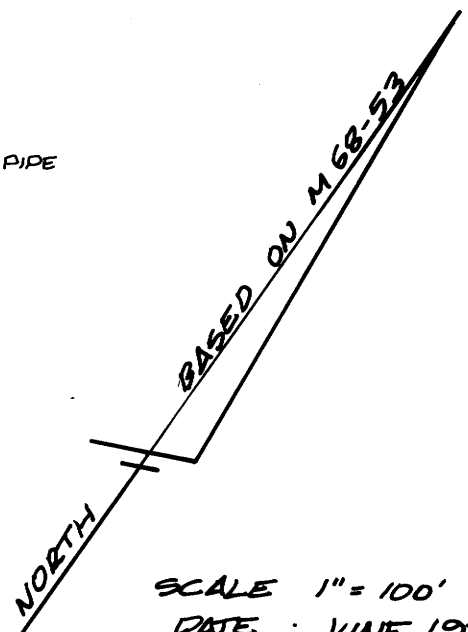
WILLIAM J. HAYES  
605



FOUND 5/8" IRON ROD  
MOST WESTERLY COR.  
OF LOT 1, BLOCK B  
SUBDIVISION OF  
MAPLE PARK ADDITION.

FOUND  
1/2" IRON ROD

FOUND 1/2" IRON PIPE  
IN CONCRETE



- SET 1/2" IRON ROD OR AS SHOWN
- FOUND UNRECORDED MONUMENT
- ⊙ FOUND MONUMENT OF RECORD
- RECORD DISTANCE PER PLAT OF RIDDLE
- <> RECORD PER BLOCK B SUBDIVISION OF MAPLE PARK ADDITION
- ◀ CONC. BLOCK TIRE RACK & LPG. TANK OVER THE WESTERLY LINE OF LOTS 1, 2 & 3

UNIQUE SURVEYING CO.  
626 Division, Myrtle Creek  
863-5201

COUNTY SURVEYORS FILE DATA  
NOT REMOVE FROM OFFICE

C.S. File 58 / 143

Map File 77 - 56

C.S. File 58 / 143  
Map File 77 - 56