

COUNTY SURVEYORS FILE DATA
NOT REMOVE FROM OFFICE

SURVEY FOR PROPERTY CORNERS

IN SECTION 21, T.28S. R.6W. W.M. — JUNE 1979 — SCALE: 1" = 20'

FOR: KIN LANCASTER

BY: BAUGHMAN TECHNICAL SERVICES INC.

FILED ✓
RECEIVED TB

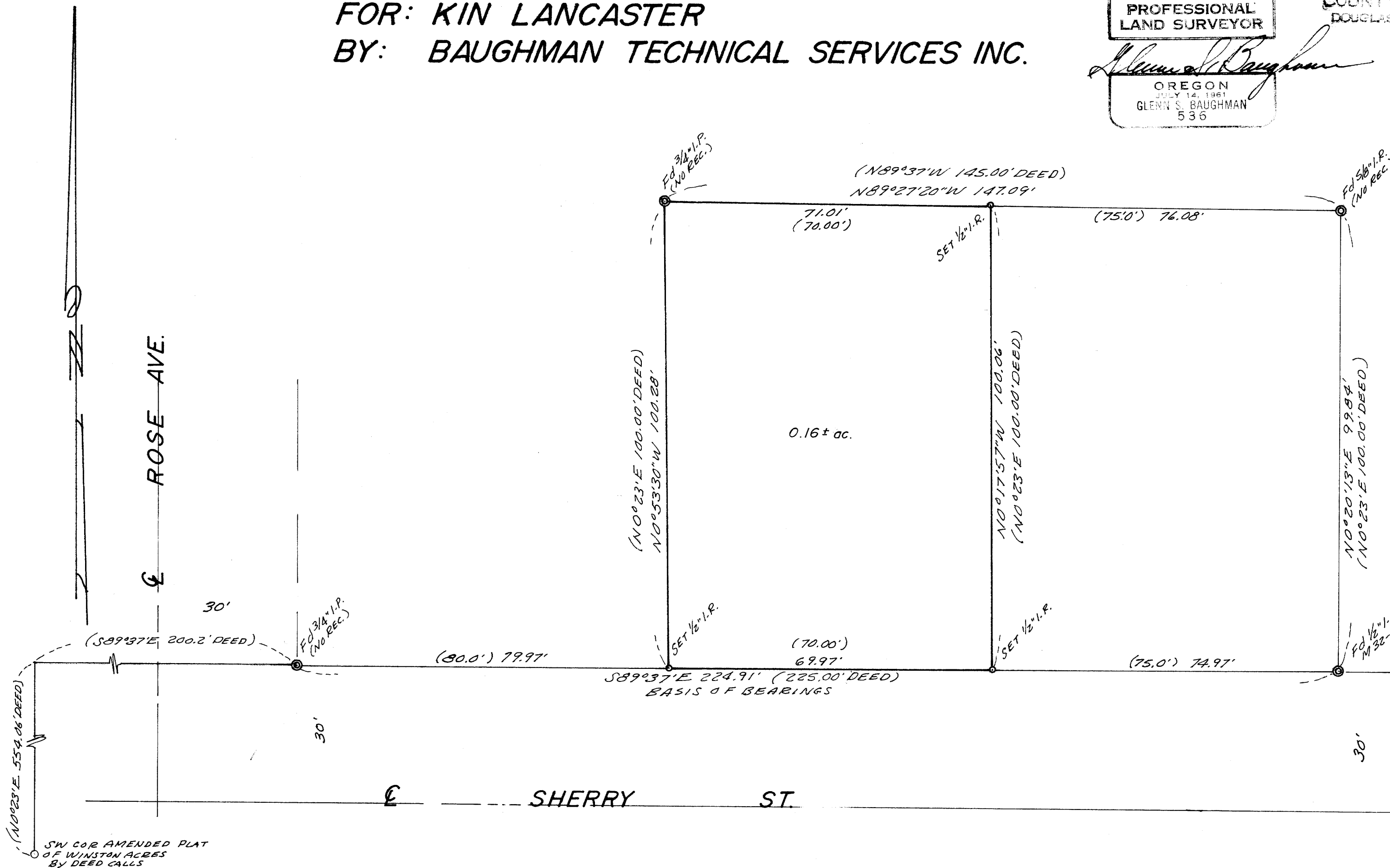
JUL 8 1979

COUNTY SURVEYOR
DOUGLAS COUNTY, ORE

TB

REGISTERED
PROFESSIONAL
LAND SURVEYOR

OREGON
JULY 14, 1961
GLENN S. BAUGHMAN
536



FM 4-826

MAP FILE M 77-54

MAP FILE M 77-54