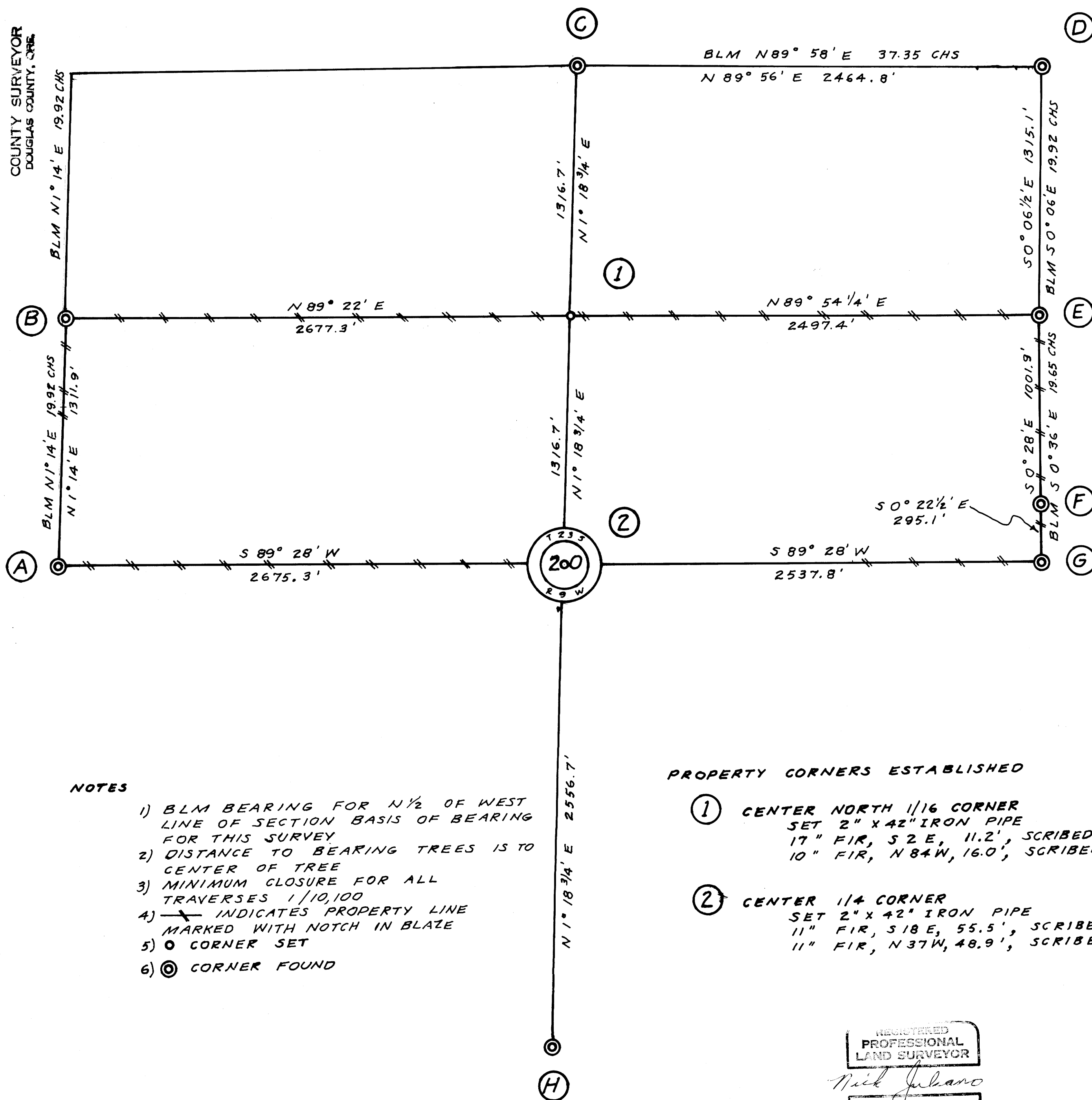


FILED
RECEIVED: 88

JUN 5 1979

COUNTY SURVEYOR
DOUGLAS COUNTY, ORE



CORNERS USED FOR CONTROL

- (A) WEST 1/4 CORNER
FOUND BLM PIPE WITH BRASS CAP 1969
28" FIR, S 51 E, 137.3'
22" FIR, S 11 W, 153.8'
20" ALDER, N 50 E, 25.0'
- (B) NORTH 1/16 CORNER SECS 19 & 20
FOUND BLM PIPE WITH BRASS CAP 1969
15" FIR, S 86 E, 85.8'
15" FIR, N 45 W, 22.1'
- (C) NORTH 1/4 CORNER
FOUND BLM PIPE WITH BRASS CAP 1969
15" HEMLOCK, N 66 E, 11.9'
6" FIR, S 16 W, 22.4'
- (D) NORTHEAST SECTION CORNER
FOUND BLM PIPE WITH BRASS CAP 1969
18" FIR STUMP, N 70 W, 5.9'
10" HEMLOCK, N 60 W, 61.4'
14" HEMLOCK, S 60 W, 123.4'
- (E) NORTH 1/16 CORNER SEC 20 ONLY
FOUND BLM PIPE WITH BRASS CAP 1977
20" HEMLOCK, S 60 W, 23.7'
19" MAPLE SNAG, N 60 W, 25.8'
10" HEMLOCK, S 43 W, 85.1'
15" HEMLOCK, N 64 W, 48.5'
- (F) WEST 1/4 CORNER SECTION 21 ONLY
FOUND BLM PIPE WITH BRASS CAP 1977
27" WHITE FIR, N 49 E, 70.0'
9" FIR, S 61 E, 8.9'
- (G) EAST 1/4 CORNER SECTION 20 ONLY
FOUND BLM PIPE WITH BRASS CAP 1977
20" HEMLOCK, S 55 W, 53.5'
13" HEMLOCK, N 73 W, 29.0'
- (H) SOUTH 1/4 CORNER
FOUND BLM PIPE WITH BRASS CAP 1977
8" HEMLOCK, N 14 E, 65.3'
11" HEMLOCK, S 36 W, 57.4'

NOTES

- 1) BLM BEARING FOR N 1/2 OF WEST LINE OF SECTION BASIS OF BEARING FOR THIS SURVEY
- 2) DISTANCE TO BEARING TREES IS TO CENTER OF TREE
- 3) MINIMUM CLOSURE FOR ALL TRAVERSES 1/10,100
- 4) —X— INDICATES PROPERTY LINE MARKED WITH NOTCH IN BLAZE
- 5) ○ CORNER SET
- 6) ⊙ CORNER FOUND

PROPERTY CORNERS ESTABLISHED

- ① CENTER NORTH 1/16 CORNER
SET 2" X 42" IRON PIPE
17" FIR, S 2 E, 11.2', SCRIBED
10" FIR, N 84 W, 16.0', SCRIBED
- ② CENTER 1/4 CORNER
SET 2" X 42" IRON PIPE
11" FIR, S 18 E, 55.5', SCRIBED
11" FIR, N 37 W, 48.9', SCRIBED

REGISTERED
PROFESSIONAL
LAND SURVEYOR

Nick Juliano

OREGON
MAY 1977
NICK JULIANO
1229

SURVEY OF
SECTION 20, T23S, R9W, WM
DOUGLAS COUNTY, OREGON
FOR
WEYERHAEUSER COMPANY
MAY 1979
SCALE: 1" = 400'

COUNTY SURVEYORS FILE OFFICE
DO NOT REMOVE FROM OFFICE

MAP FILE M 77-59