

M77-45A

MAJOR LAND PARTITION

COUNTY SURVEYORS FILE DATA
DO NOT REMOVE FROM OFFICE

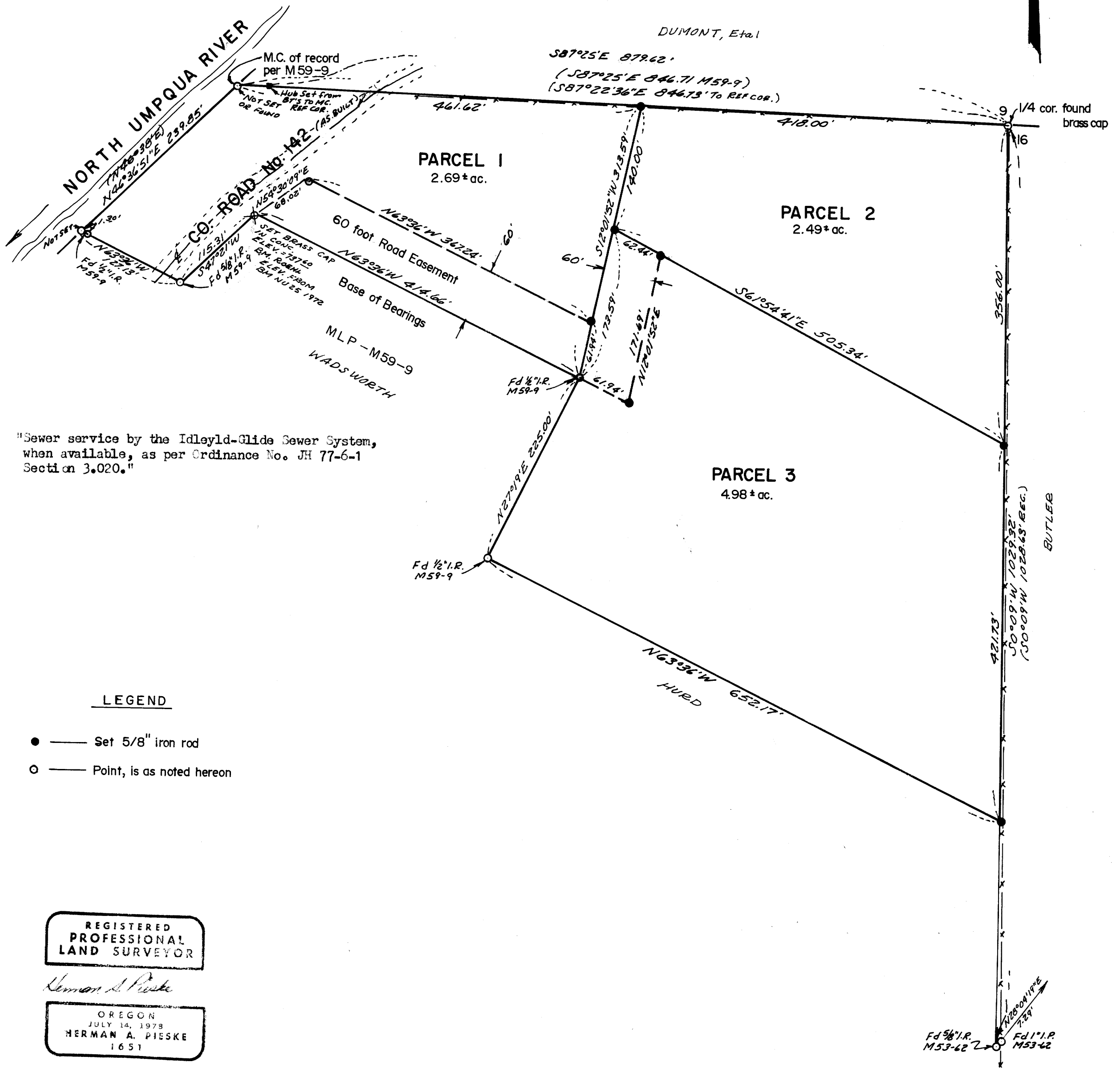
IN SECTION 16, T.26S.R.3W.W.M.

SCALE 1"=100' — APRIL 1979

FILED
RECEIVED JUN

MAY 31 1979

COUNTY SURVEYOR
DOUGLAS COUNTY, ORE.
J. W.



NOTE: "Sewer service by the Idleyld-Glide Sewer System, when available, as per Ordinance No. JH 77-6-1 Section 3.020."

LEGEND

- — Set 5/8" iron rod
- — Point, is as noted hereon

REGISTERED
PROFESSIONAL
LAND SURVEYOR

Herman A. Pieske

OREGON
JULY 14, 1978
HERMAN A. PIESKE
1651

SHEET 1 OF 2

Bl 5 pg 61-A