

MAP FILE ~~M. 77-39~~

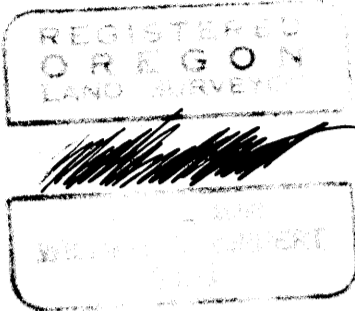
**SURVEY TO SET CORNERS**

for *James G. Hunt*

in Section 33, T.30 S., R.2 W., W.M.

Scale: 1" = 300'

May, 1979



FILED ✓  
RECEIVED w

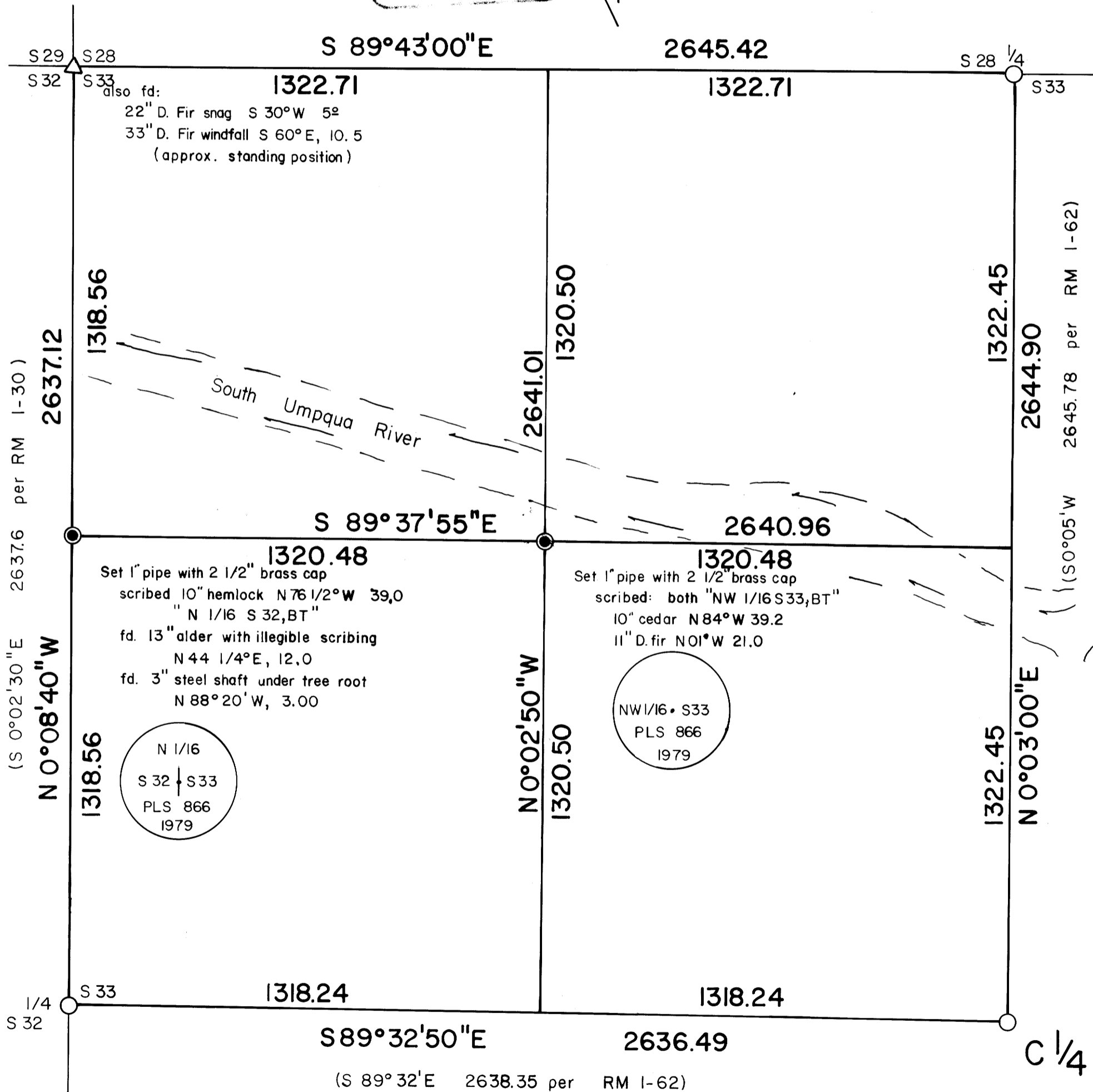
MAY 29 1979

COUNTY SURVEYOR  
DOUGLAS COUNTY, ORE.

LEGEND:

- Found 2" pipe with 2 1/2" brass cap per M 70-61
- △ Found large stone with "X" and 1 1/4" pipe 0.10 South per RM 1-30
- Set 1" X 30" galvanized steel pipe with a 2 1/2" brass cap marked as shown

Bearings based upon M 70-61



UMPQUA SURVEYING COMPANY ~ MYRTLE CREEK