

COUNTY SURVEYORS FILE DATA
DO NOT REMOVE FROM OFFICE

SURVEY FOR PROPERTY CORNERS

IN SECTION 14 T.28S. R.6W. W.M. — MAY 1979 — SCALE: 1"=50'

FOR: RAYMOND REIGER — BY: BAUGHMAN TECHNICAL SERVICES INC.

FILED ✓
RECEIVED ✓

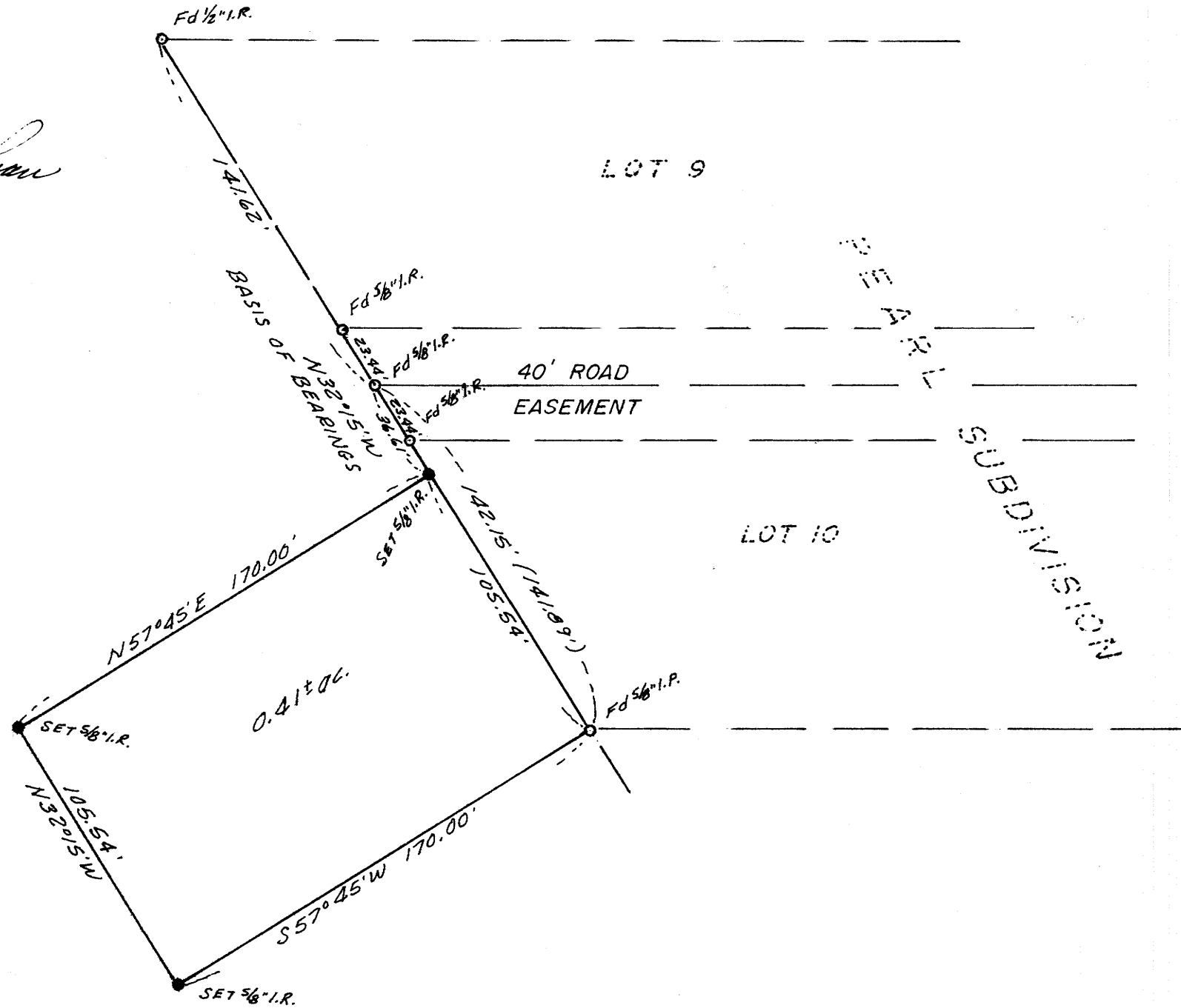
MAY 22 1979

COUNTY SURVEYOR
DOUGLAS COUNTY, ORE.
✓

REGISTERED
PROFESSIONAL
LAND SURVEYOR

Glenn S. Baughman

OREGON
JULY 12 1967
GLENN S. BAUGHMAN
536



CZ

MAP FILE M.77-31

MAP FILE M.77-31