

COUNTY SURVEYORS FILE DATA  
DO NOT REMOVE FROM OFFICE

# SURVEY TO REVISE PROPERTY LINES

IN SECTION 22, T.27S.R.6W.W.M.

FOR: MICHAEL PHELP & ELLEN MILES

BY: BAUGHMAN TECHNICAL SERVICES INC.

MAY 1979

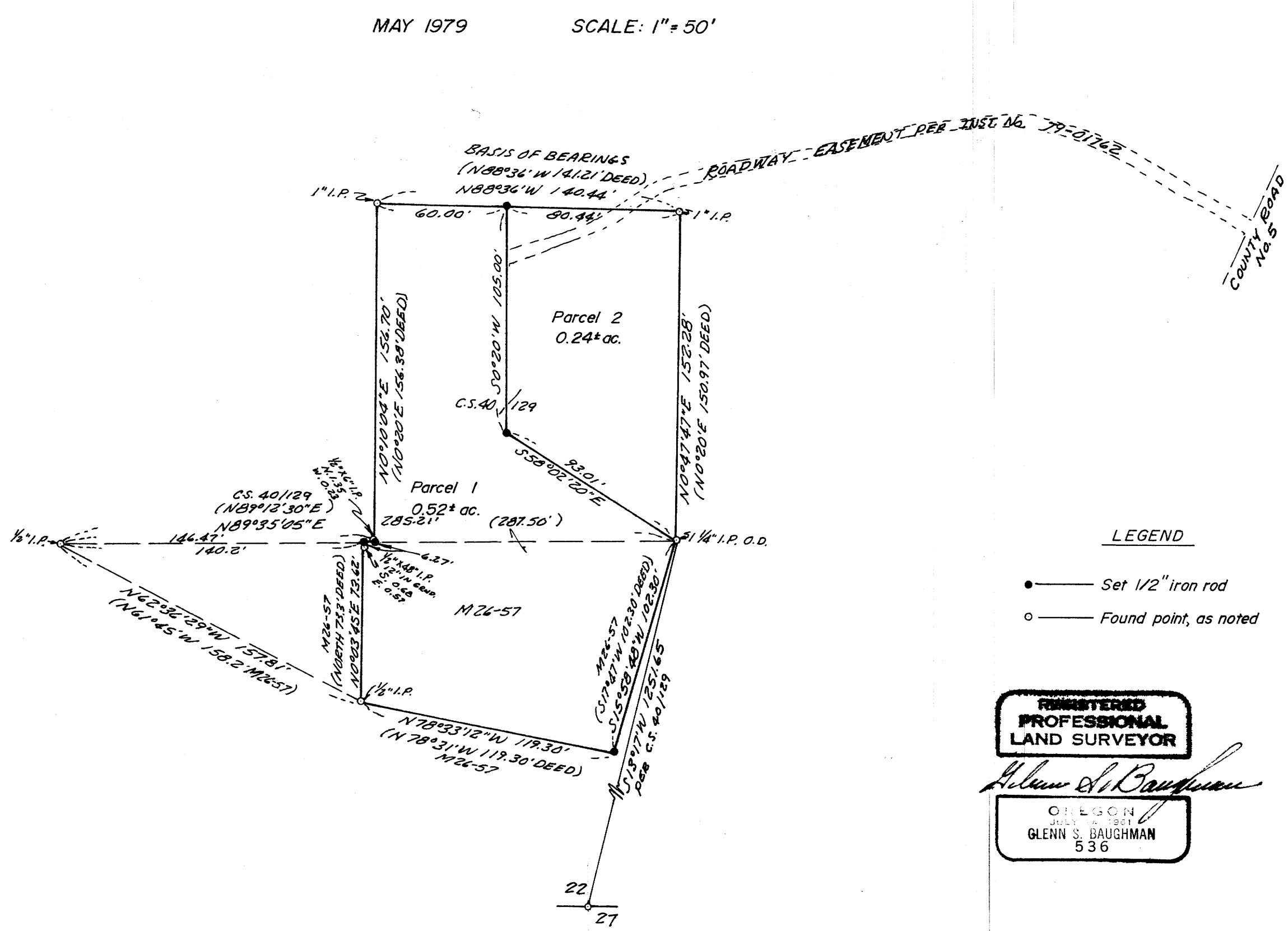
SCALE: 1" = 50'

FILED *z*  
RECEIVED *z*

MAY 22 1979

COUNTY SURVEYOR  
COUGLAS COUNTY, ORE

MAP FILE M.77-30



FM 4-823

MAP FILE M.77-30