

PROPERTY SURVEY FOR BASIL DENISON
 IN BLOCK C, PLAT J, S. L. & W. Co., SEC. 17, T25S, R5W, W.M.

MAY, 1979

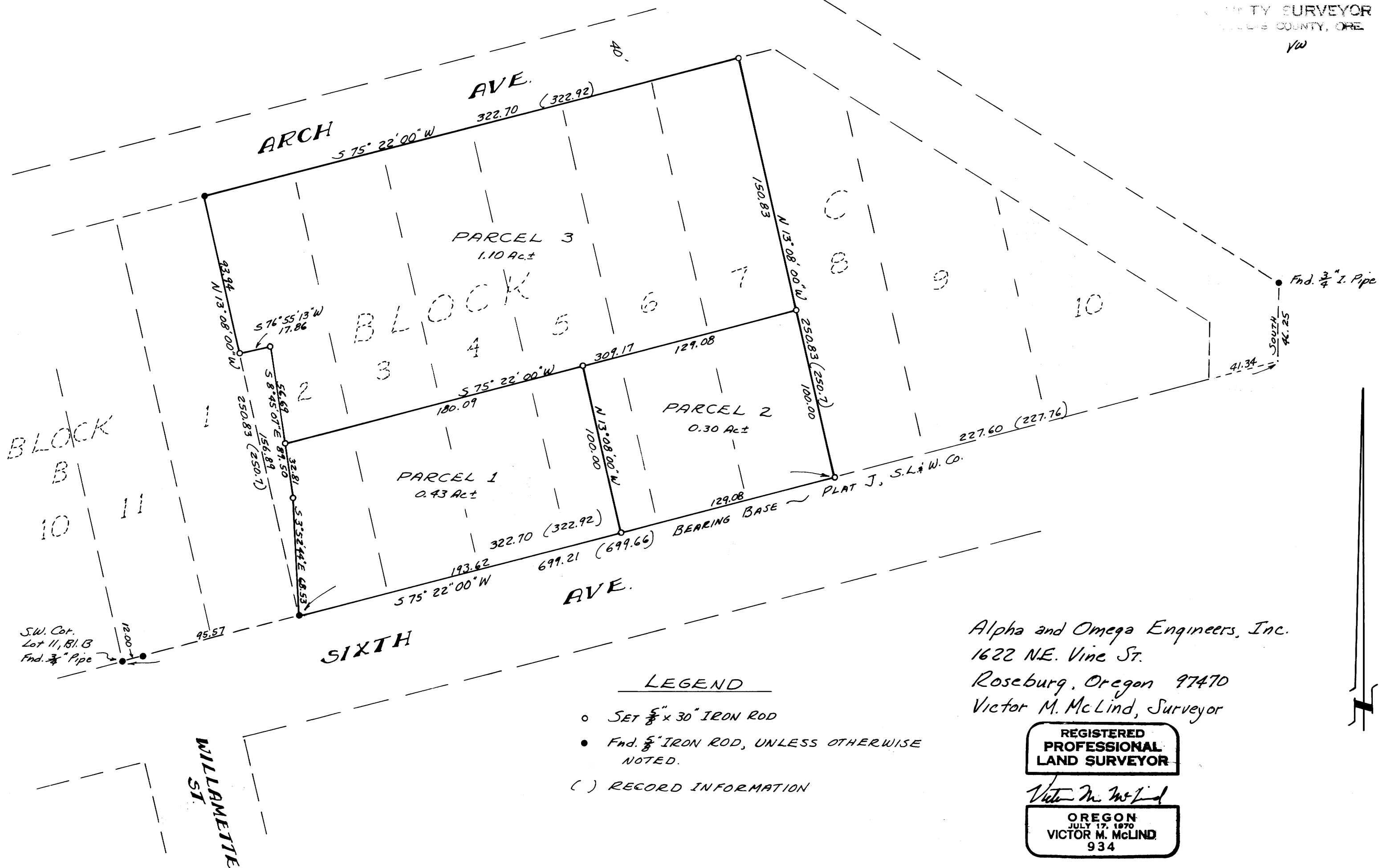
SCALE: 1" = 50'

COUNTY SURVEYORS FILE DATA
 DO NOT REMOVE FROM OFFICE

FILED ✓
 RECEIVED DK

MAY 7 1979

COUNTY SURVEYOR
 WASHINGTON COUNTY, ORE.
 YW



Alpha and Omega Engineers, Inc.
 1622 N.E. Vine St.
 Roseburg, Oregon 97470
 Victor M. McLind, Surveyor

MAP FILE 77-3

MAP FILE 77-3