

COUNTY SURVEYORS FILE DATA
DO NOT REMOVE FROM OFFICE

MAJOR LAND PARTITION

IN SECTION 9, T.30S.R.4W.W.M.

MAY 1979

SCALE: 1"=200'

FILED
RECEIVED

MAY 21 1979

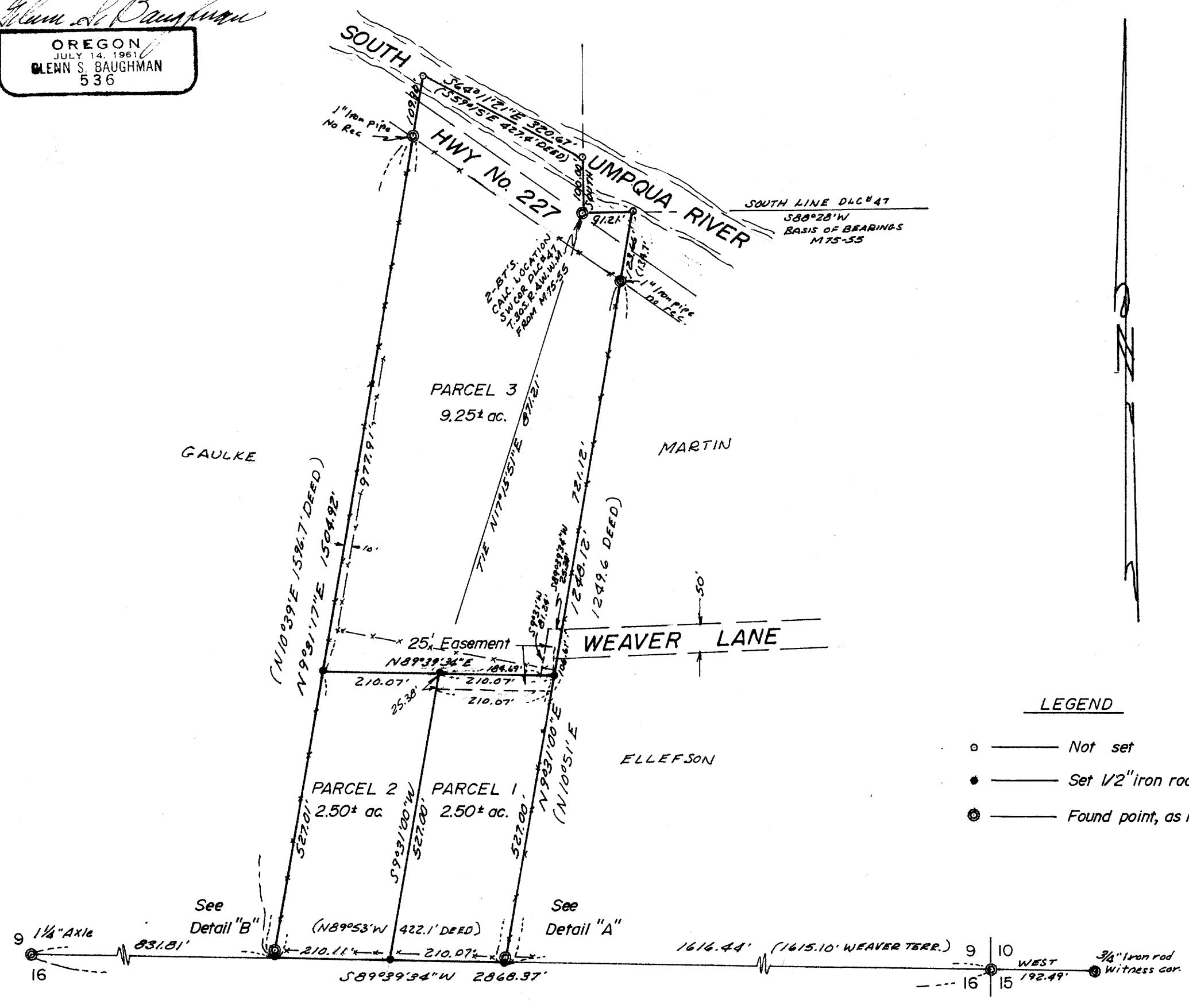
COUNTY SURVEYOR
DOUGLAS COUNTY, ORE.

Bk 5 pg 54-B

REGISTERED
PROFESSIONAL
LAND SURVEYOR

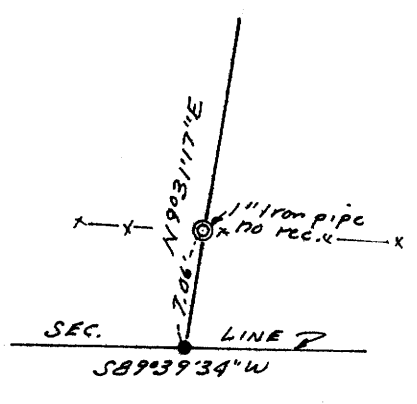
Glen S. Baughman

OREGON
JULY 14, 1961
GLEN S. BAUGHMAN
536

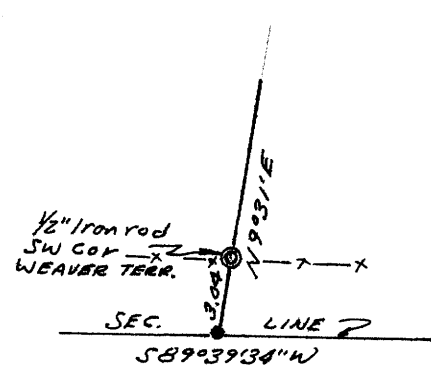


LEGEND

- ——— Not set
- ——— Set 1/2" iron rod
- ⊙ ——— Found point, as noted



DETAIL "B"
no scale



DETAIL "A"
no scale

STATE OF OREGON)
COUNTY OF DOUGLAS) SS.

I, DORIS L. WADSWORTH, COUNTY CLERK
AND RECORDER OF CONVEYANCES, IN AND FOR
SAID COUNTY, DO HEREBY CERTIFY THAT THE
WITHIN INSTRUMENT WAS RECORDED THIS DAY:

1979 MAY 21 PM 3 00

BY Mary J. Seal
DEPUTY

NO. _____ FEE 6.00

DOUGLAS COUNTY OFFICIAL RECORDS

79-08210

SHEET 2 OF 2

MAP FILE M.7.7-28.D.