

SURVEY TO ESTABLISH LOT CORNERS IN COUNTY SURVEYORS FILE DATA DO NOT REMOVE FROM OFFICE

LOT 4, BLOCK 5, "NEBO-VISTA HOMES SUBDIVISION," IN SECTION 23, T27S, R6W, W.M.

FOR: STEVE HANCOCK
BY: DON BENTZ

FILED *d*
RECEIVED *hb*
MAY 18 1979
COUNTY SURVEYOR
DOUGLAS COUNTY, ORE.
zw

REGISTERED
PROFESSIONAL
LAND SURVEYOR

Donald A. Bentz

OREGON
JULY 12, 1923
DONALD A. BENTZ
839

MAY 1979

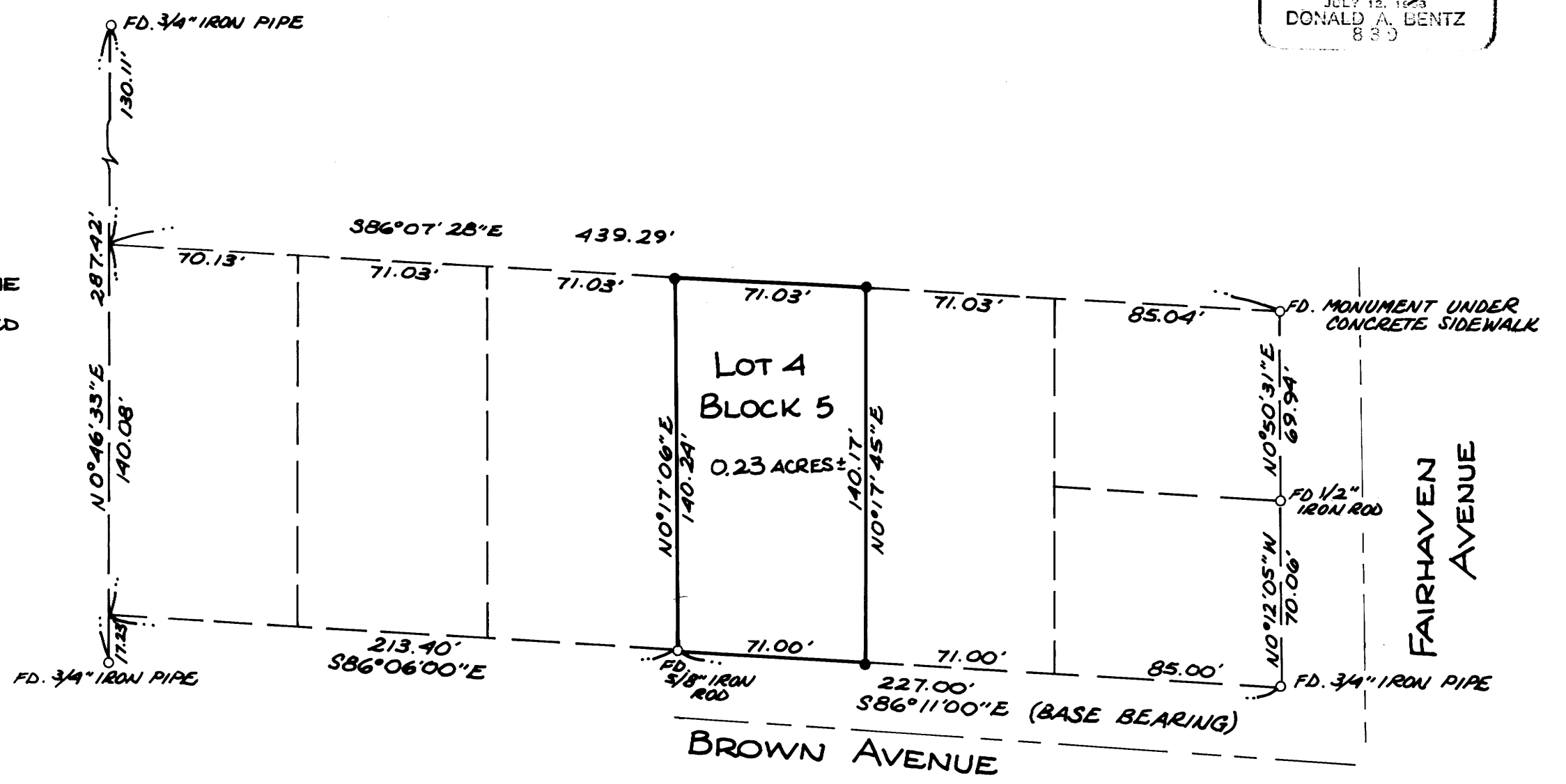
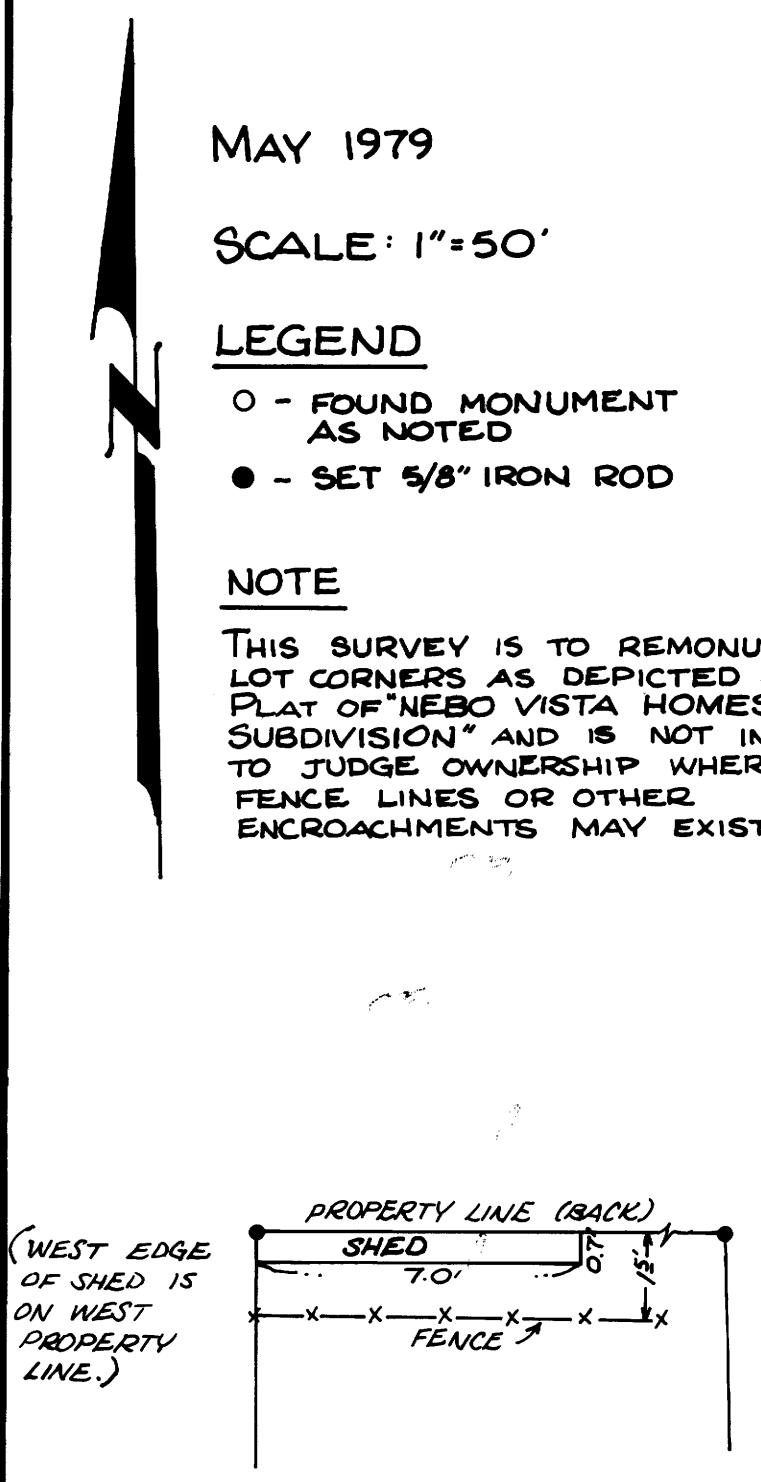
SCALE: 1"=50'

LEGEND

- - FOUND MONUMENT AS NOTED
- - SET 5/8" IRON ROD

NOTE

THIS SURVEY IS TO REMONUMENT LOT CORNERS AS DEPICTED ON THE PLAT OF "NEBO VISTA HOMES SUBDIVISION" AND IS NOT INTENDED TO JUDGE OWNERSHIP WHERE FENCE LINES OR OTHER ENCROACHMENTS MAY EXIST.



MAP FILE 117-26

MAP FILE 117-26