

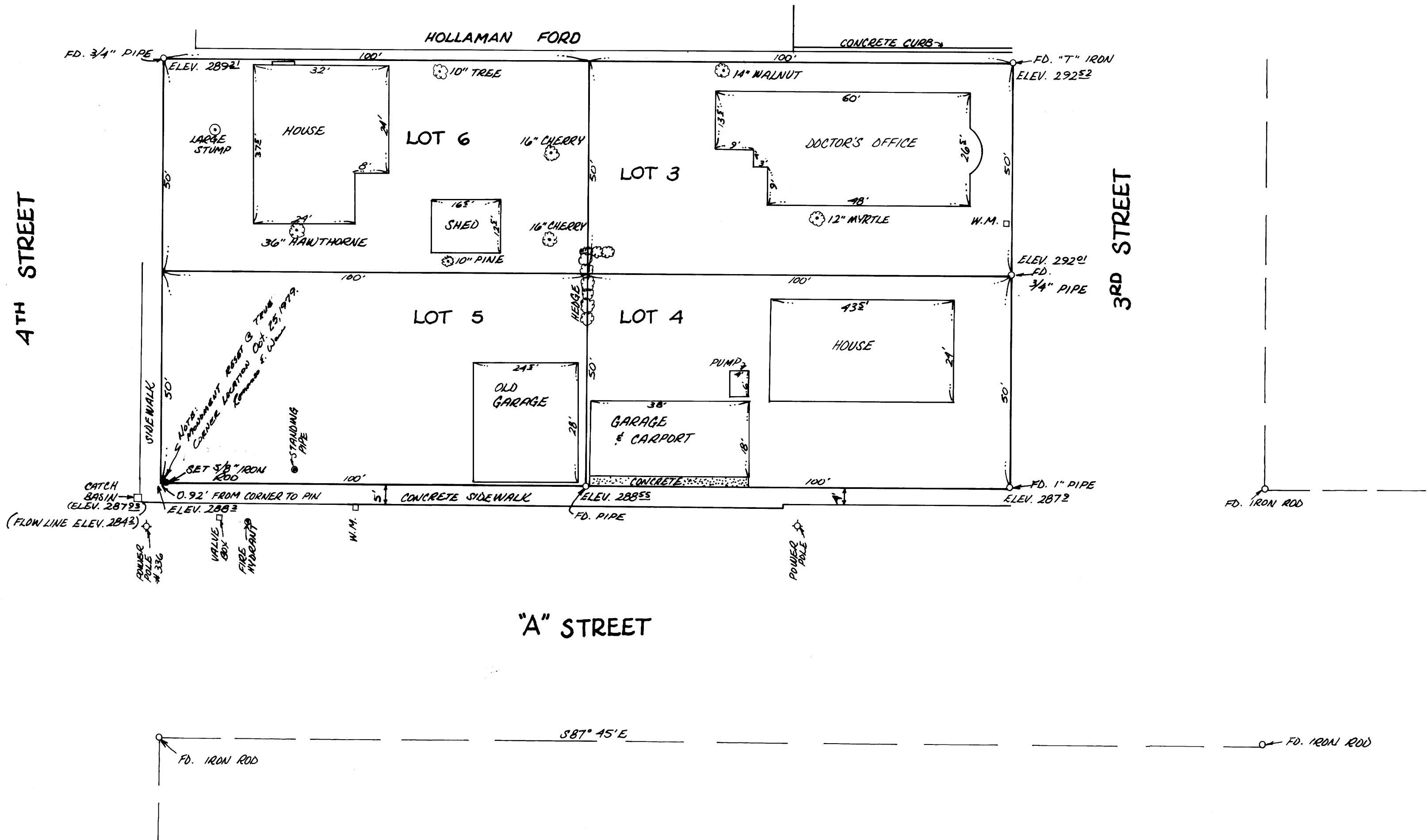
COUNTY SURVEYORS FILE DATA  
DO NOT REMOVE FROM OFFICE

# TOPOGRAPHIC SURVEY FOR GEORGE EMMERT IN SECTION 17, T22S, R5W, W.M. IN BLOCK 18, LOTS 3, 4, 5, & 6, PLAT OF DRAIN

FILED *JK*  
RECEIVED *JK*  
MAY 16 1979  
COUNTY SURVEYOR  
CLATSOP COUNTY, ORE.  
*W*

## BY: BHW ENGINEERING & SURVEYING

SCALE: 1" = 20'  
APRIL 1979



REGISTERED  
PROFESSIONAL  
LAND SURVEYOR

*Romano E. Ware*

OREGON  
NOV. 16, 1973  
ROMANSO E. WARE  
1005

MAP FILE 227-24

MAP FILE 227-24