

COUNTY SURVEYORS FILE DATA
DO NOT REMOVE FROM OFFICE

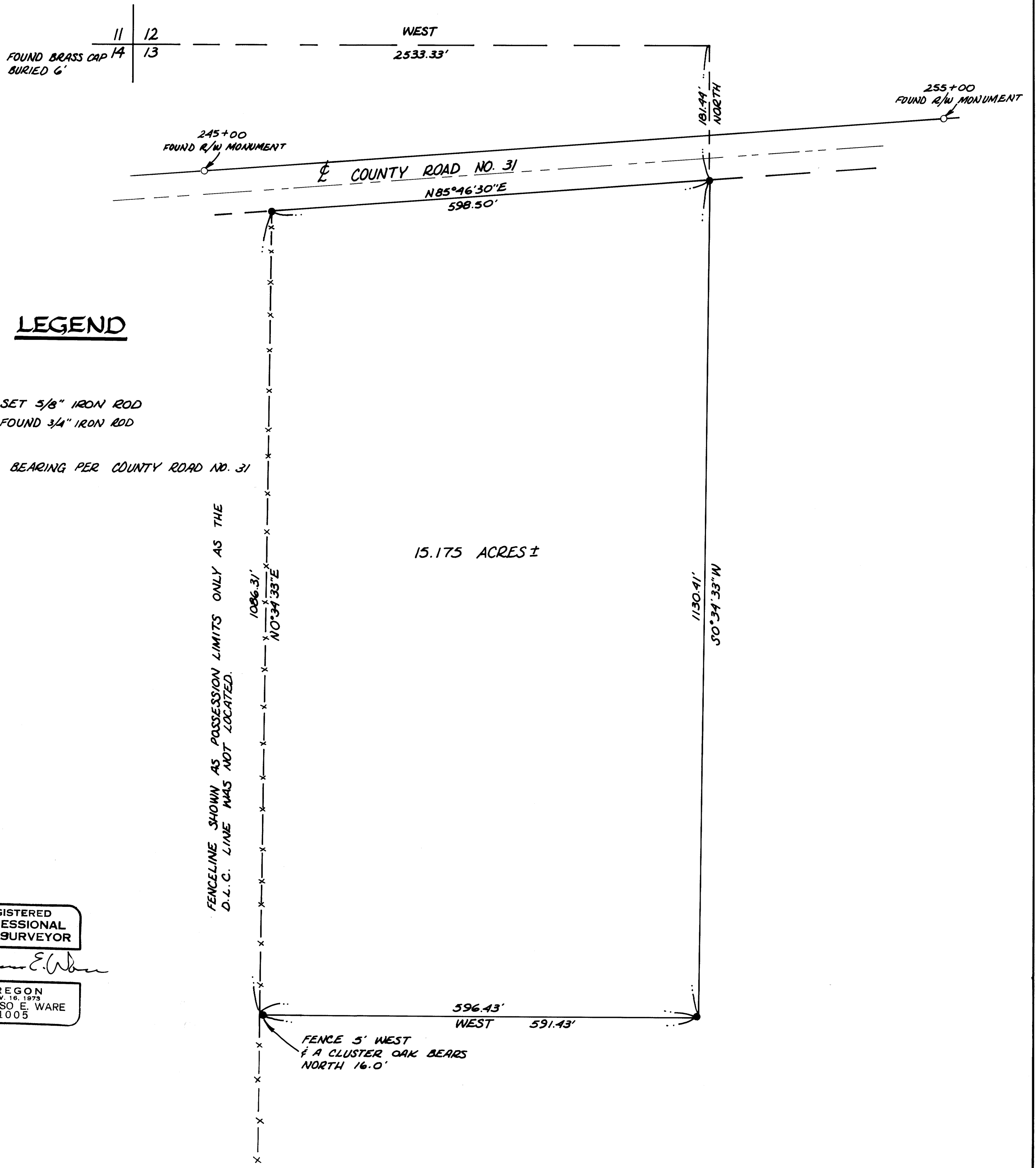
SURVEY IN SECTION 13, T26S, R6W, W.M.

FOR: PHIL BECKLEY
BY: BHW ENGINEERING & SURVEYING

APRIL 1979

SCALE: 1" = 100'

FILED *rk*
RECEIVED *rk*
MAY 16 1979
COUNTY SURVEYOR
WHEELER COUNTY, ORE.
w



REGISTERED
PROFESSIONAL
LAND SURVEYOR

Romano E. Ware

OREGON
NOV. 16, 1973
ROMANSO E. WARE
1005