

SURVEY FOR PROPERTY CORNERS

LOTS 17, 18 & 19 BLOCK 60 KINNEY'S IMPROVED PLAT
 SEC. 18 T.27S. R.5W.W.M. - MAY 1979 - SCALE: 1" = 20'

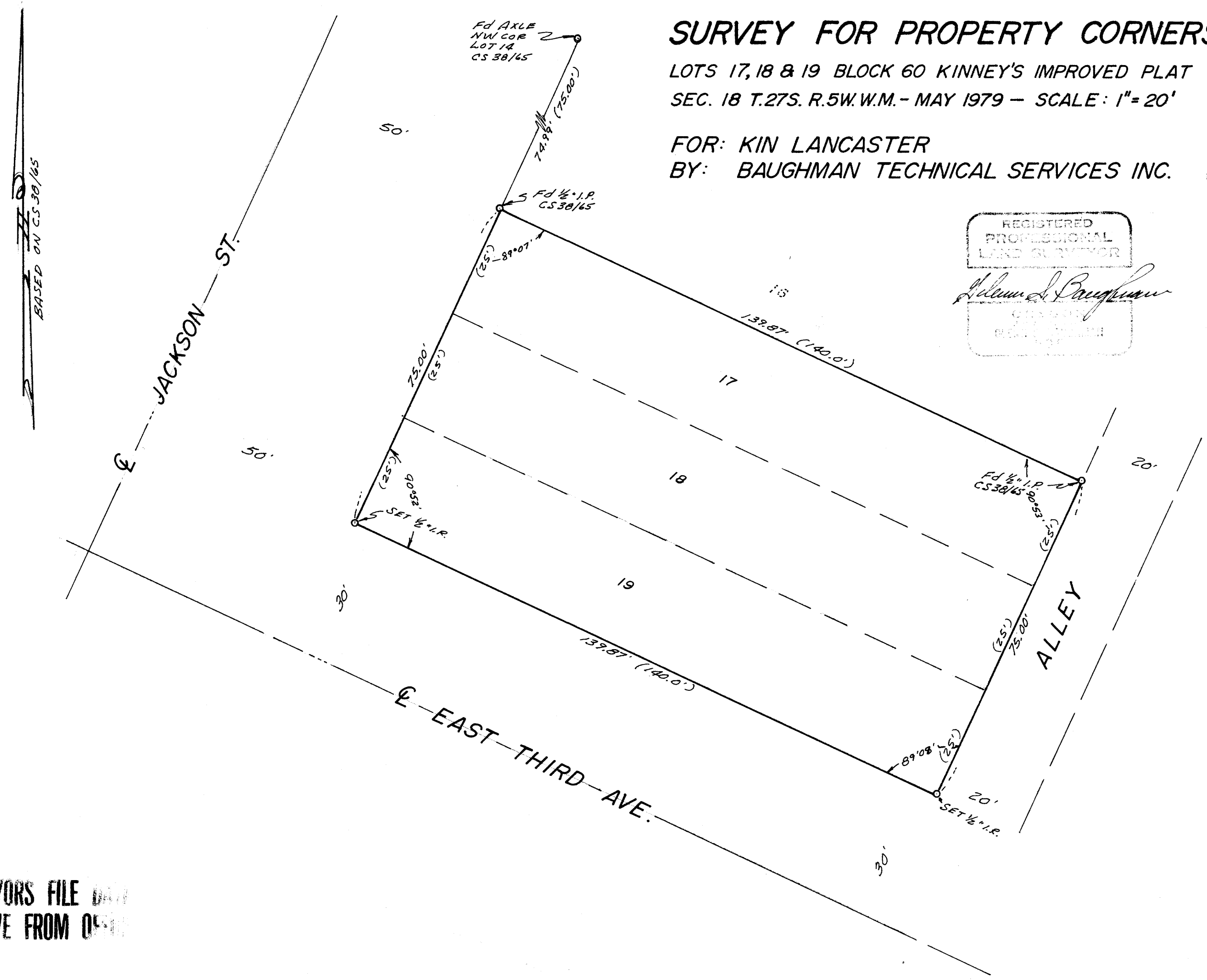
FOR: KIN LANCASTER
 BY: BAUGHMAN TECHNICAL SERVICES INC.

FILED *d*
 RECEIVED *vl*
 MAY 15 1979
 COUNTY SURVEYOR
 DOUGLAS COUNTY, ORE.
zw

REGISTERED
 PROFESSIONAL
 LAND SURVEYOR

William J. Baughman

DOUGLAS COUNTY
 OREGON



BASED ON C.S. 38/65

PLANNED SURVEYORS FILE DATA
 DO NOT REMOVE FROM OFFICE

MAP FILE M27-20

MAP FILE M27-20