

COUNTY SURVEYORS OFFICE
DO NOT REMOVE FROM OFFICE

FILED
RECEIVED

MAY 14 1979

COUNTY SURVEYOR
DOUGLAS COUNTY, ORE.
TB

SECT. 21, T.24S., R7W. W.M.

Survey To locate lines & corners

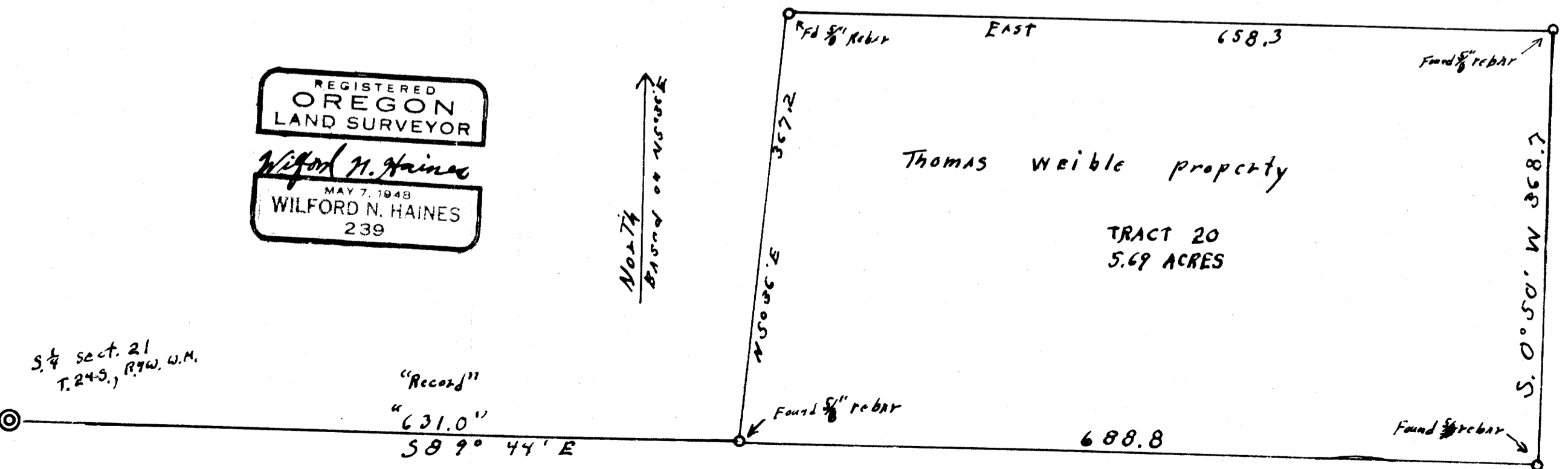
for
Geo. Gross Rt 2 Box 66A Elkton, Ore
Phone 584 2805

Scale 1" = 100'

MAY 5, 1979

REGISTERED
OREGON
LAND SURVEYOR
Wilford N. Haines
MAY 7, 1948
WILFORD N. HAINES
239

North
Based on
Meridian



1/4 sect. 21
T.24S., R7W. W.M.

"Record"

631.0'

58° 44' E