

COUNTY SURVEYORS FOR OREGON
DO NOT REMOVE FROM OFFICE

SECT 21, T.22 S. R.8 W. W.M.

DLC # 44

for
Merle Godding

Elkton, Oregon.

Scale: 1" = 100'

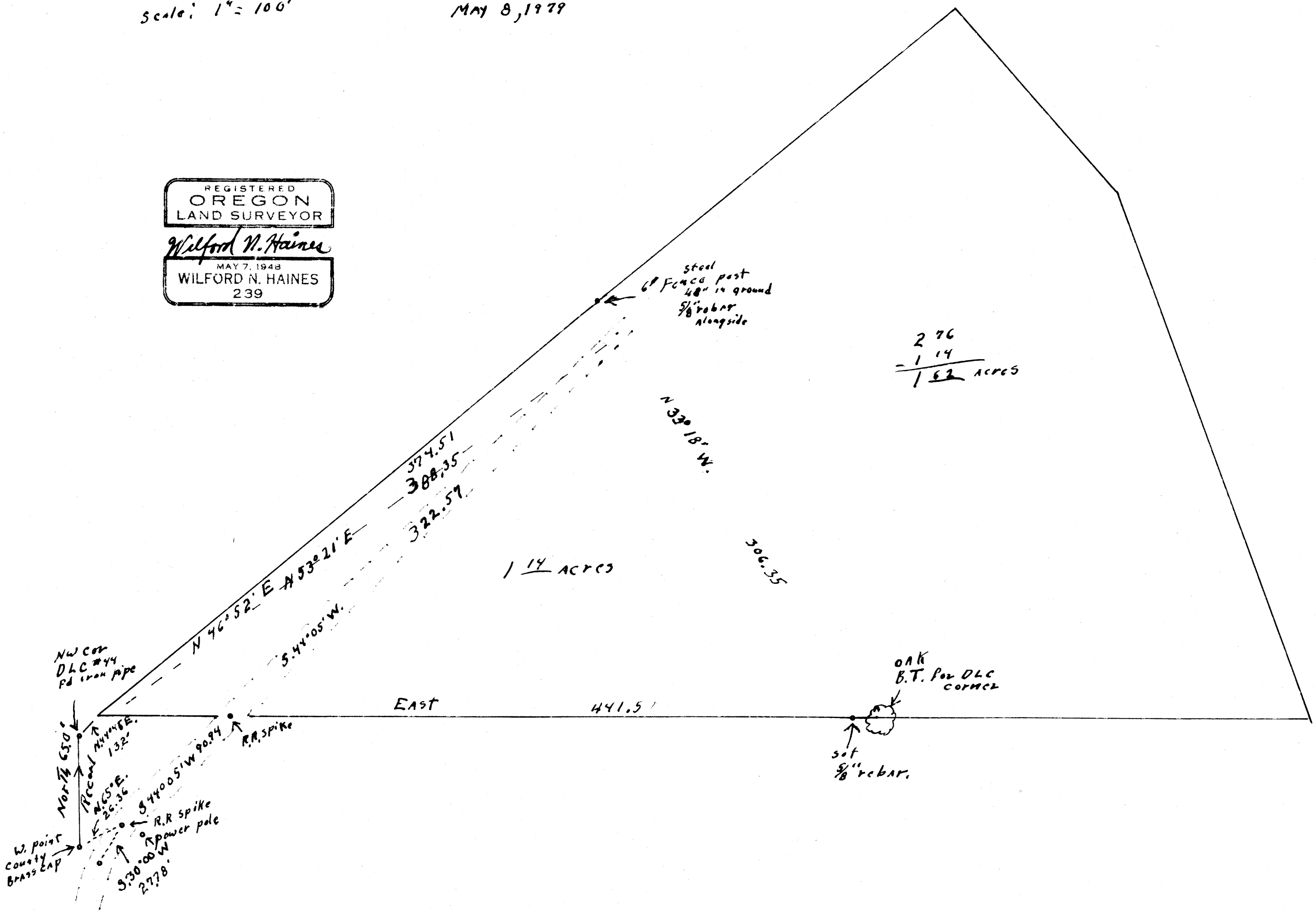
MAY 8, 1979

FILED ✓
RECEIVED ✓

MAY 14 1979

COUNTY SURVEYOR
DOUGLAS COUNTY, ORE.
TB

REGISTERED
OREGON
LAND SURVEYOR
Wilford N. Haines
MAY 7, 1948
WILFORD N. HAINES
239



MAP FILE 117-116

MAP FILE 117-116

MAP FILE 117-116