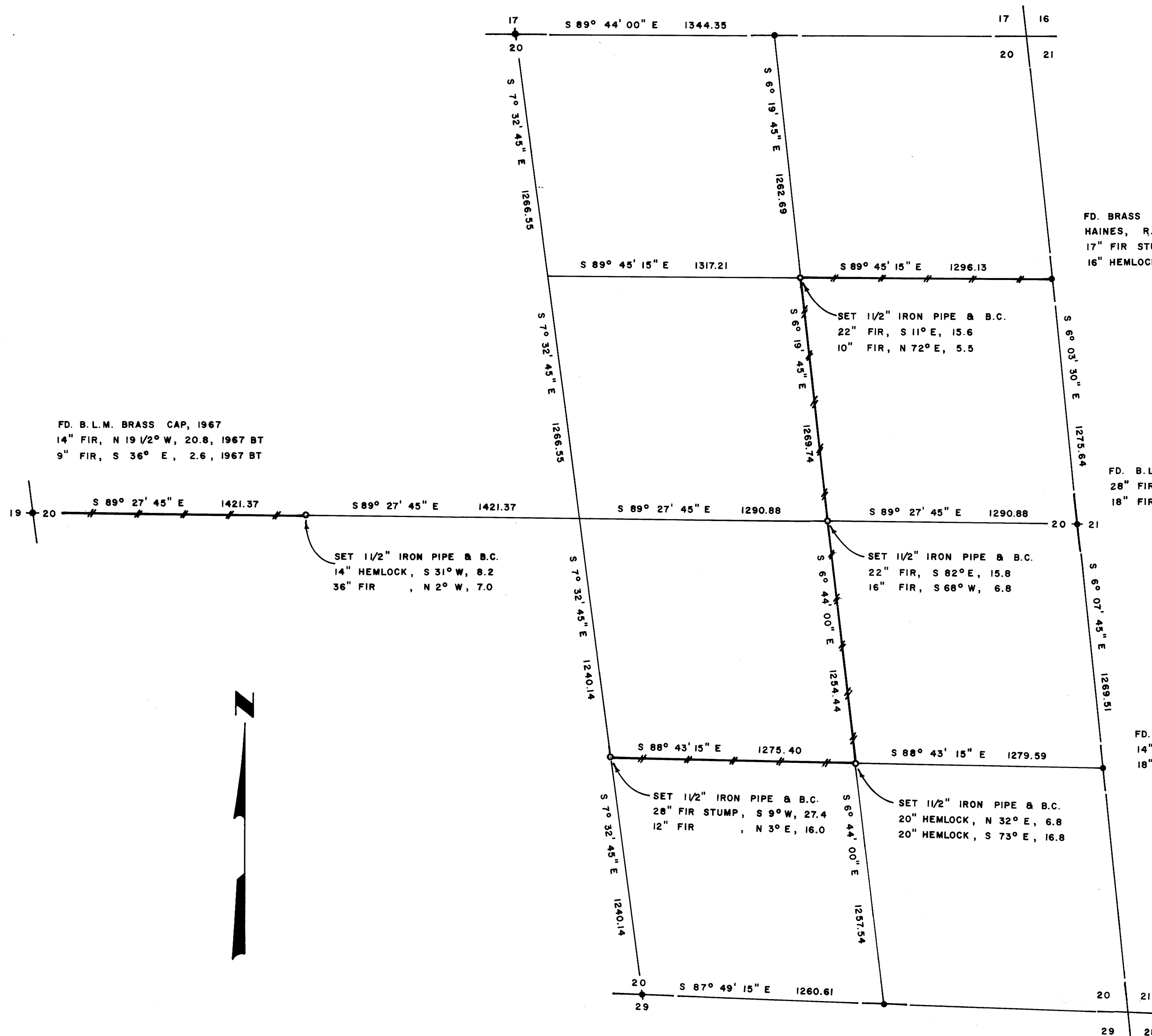


FILED
RECEIVED
MAY 11 1979
COUNTY SURVEYOR
DOUGLAS COUNTY, ORE

FD. B.L.M. BRASS CAP, 1967
36" FIR, N 20° W, 46.2, 1967 BT
18" MAPLE, S 35° W, 19.1, 1967 BT

FD. B.L.M. BRASS CAP, 1967
28" HEMLOCK, N 44 1/2° E, 8.6, 1967 BT
24" HEMLOCK, S 56 1/2° E, 19.1, 1967 BT



SURVEY OF
SECTION 20, T21S, R7W, W.M.
DOUGLAS COUNTY, OREGON
FOR
INTERNATIONAL PAPER COMPANY
BY
TRIANGLE ENGINEERING COMPANY
APRIL 1979
SCALE 1" = 400'

FD. BRASS CAP, SET BY WILFORD
HAINES, R.S. NO. 239
17" FIR STUMP, N 67 1/2° E, 69.3, 1964 BT
16" HEMLOCK, S 3° W, 48.2, 1964 BT

FD. B.L.M. BRASS CAP, 1964
28" FIR, S 25° E, 23.4, 1964 BT
18" FIR, S 61° W, 18.1, 1964 BT

FD. B.L.M. BRASS CAP, 1964
14" FIR STUMP, N 7 1/2° E, 10.9, 1964 BT
18" FIR STUMP, N 35° W, 29.4, 1964 BT

FD. B.L.M. BRASS CAP, 1964
30" FIR, N 30° E, 7.3, ORIG. BT
16" FIR, N 44 1/2° E, 49.5, 1964 BT
4" FIR, S 72 3/4° E, 43.9, 1964 BT

FD. B.L.M. BRASS CAP, 1964
10" FIR, N 12 3/4° W, 4.0, 1964 BT
12" FIR, S 7 1/4° E, 23.8, 1964 BT

LEGEND

- CORNERS FOUND AND USED FOR CONTROL
- CORNERS SET
- //— LINES MARKED WITH RED PAINTED BLAZES, RODS, TAGS AND RED RIBBON
- ☀ BASIS OF BEARING, SOLAR OBSERVATION
- Distance to bearing trees are center measure
- All bearing trees are scribed

REGISTERED
PROFESSIONAL
LAND SURVEYOR
L.D. Roberts
OREGON
L.D. ROBERTS
1979

MAP FILE 22-13

MAP FILE 22-13