

COUNTY SURVEYORS FILE DATA
DO NOT REMOVE FROM OFFICE

FILED *d*
RECEIVED *13*
APR 16 1979
COUNTY SURVEYOR
DOUGLAS COUNTY, ORE *W*

PROPERTY SURVEY

FOR

HAROLD R. MEEHL

BLOCK 1, LOTS 3 & 4, SUNNY ACRES SUBDIVISION,

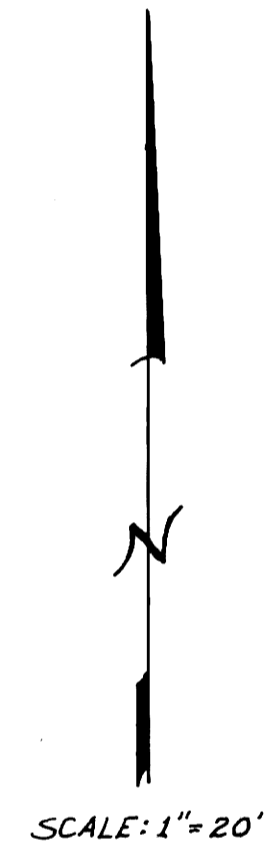
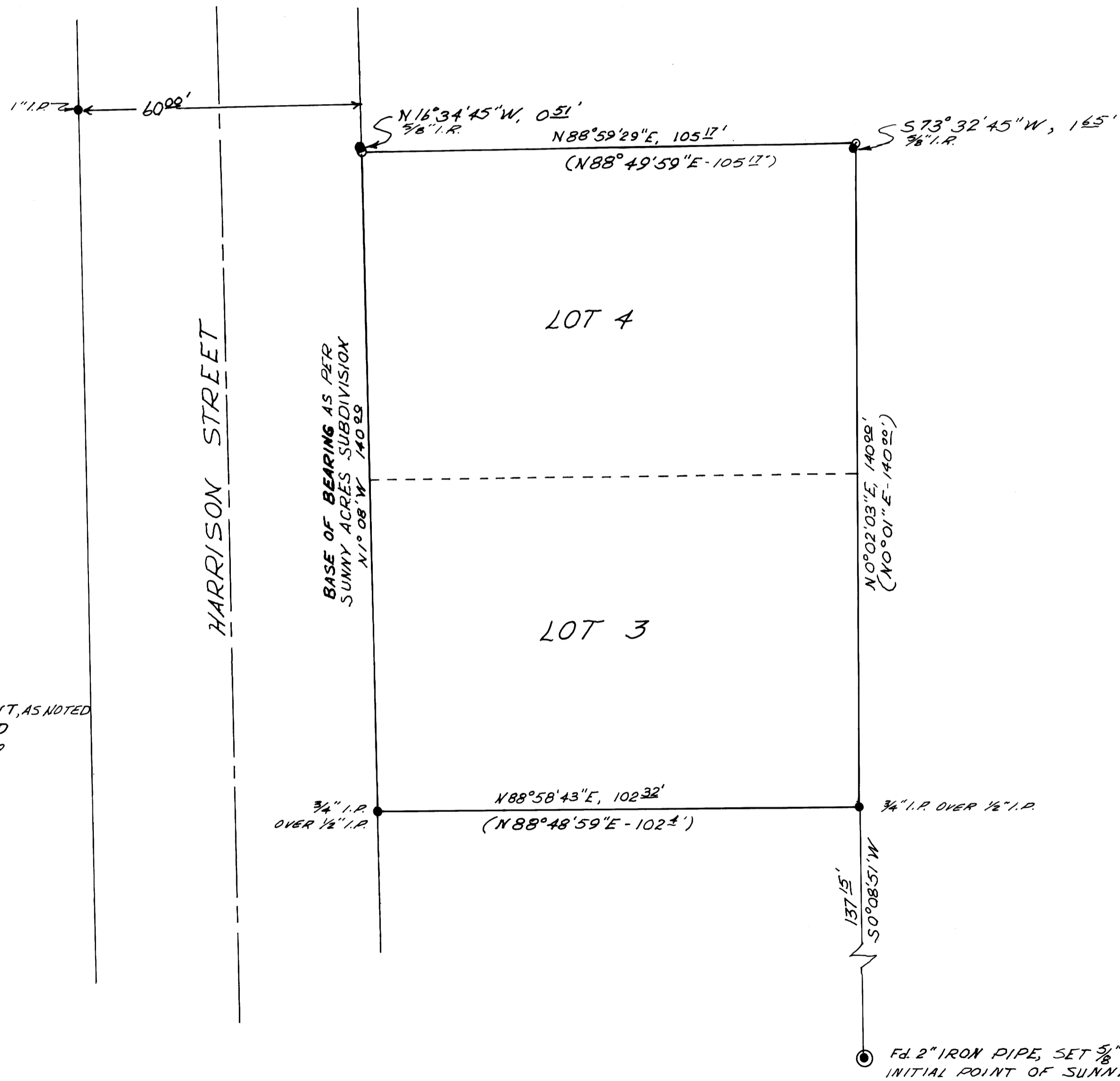
SEC. 24, T27S, R6W. W.M.

ROSEBURG, OREGON

APRIL 1979

SURVEYOR: RUSSELL T. PINARD
6550 N.W. SUMAC
CORVALLIS, OREGON 97330
745-7246

ENGINEER: ALPHA & OMEGA ENGINEERS INC.
1622 NE VINE ST.
ROSEBURG, OREGON 97470
672-7151



LEGEND

- FOUND MONUMENT, AS NOTED
- SET 5/8" IRON ROD
- () RECORD DATA

REGISTERED
PROFESSIONAL
LAND SURVEYOR
Russell T. Pinard
OREGON
JULY 16, 1971
RUSSELL T. PINARD
988

M 76-79

M 76-79