

FILED ✓
RECEIVED JHH

APR 5 1979

COUNTY SURVEYOR
DOUGLAS COUNTY, ORE.

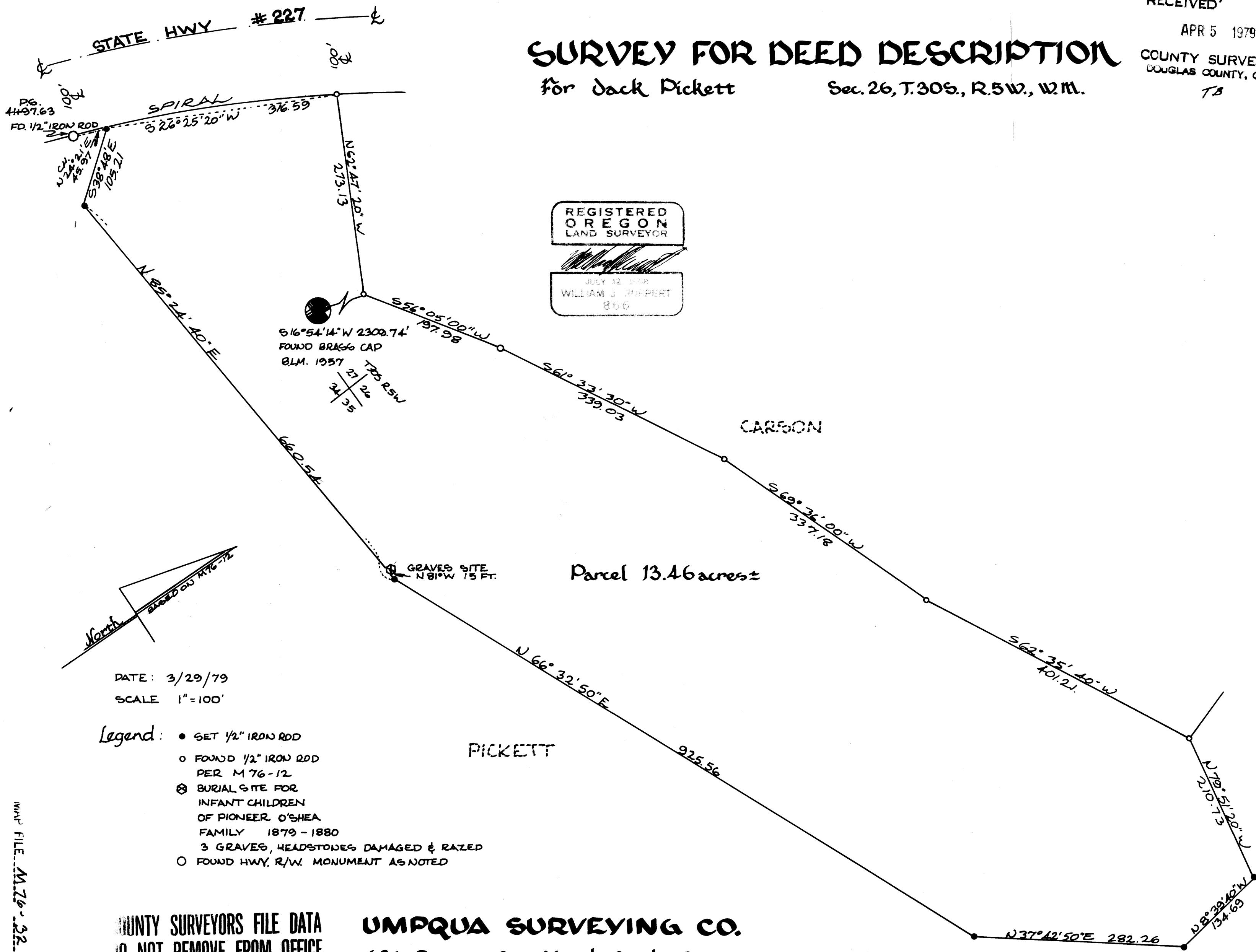
TB

SURVEY FOR DEED DESCRIPTION

For Jack Pickett

Sec. 26, T.30S., R.5W., W.M.

MAP FILE M 76-32



COUNTY SURVEYORS FILE DATA
NOT REMOVE FROM OFFICE

UMPQUA SURVEYING CO.

626 Division St. Myrtle Creek, Ore.

863-5201

MAP FILE M 76-32